

**Managing Interactions Aquaculture Project
2012/13**

**Regional Report;
2012 Sea Trout Post
Smolt Monitoring**

January 2013



Contents Page

Summary	Page i
1. Project Background	Page 1
2. Methods and Site Information	Page 2
2.1 Sweeping Survey Techniques and Data Analysis	Page 2
2.2 Site Information	Page 3
3. Sweep Netting Analysis Results	Page 6
3.1. Sea Trout Analysis	Page 6
3.1.1 Length, Weight and Condition Factor	Page 6
3.1.2 Predation Pressure	Page 9
3.2 Sea Lice Analysis	Page 10
3.2.1 <i>L. salmonis</i> Copepodid and Chalimi life Stages.	Page 10
3.2.2 <i>L. salmonis</i> Mobile life Stages.	Page 12
3.2.3 <i>L. salmonis</i> Ovigerous Female life Stage.	Page 14
3.2.4 <i>L. salmonis</i> all life Stages.	Page 15
3.2.5 <i>C. elongatus</i> all life Stages.	Page 17
4. Discussion	Page 19
4.1 Exploring the pressures from Sea Lice on wild sea trout populations.	Page 19
4.2 Managing Interactions	Page 22
4.2.1 Monitoring Site comparisons to nearest active Fish Farm.	Page 23
4.2.2 Monitoring Site Sea Lice Counts in comparison to Farmed Fish sea lice counts.	Page 25
5. Conclusions	Page 28
6. References	Page 29
7. Appendix	Page 32

Summary

The Rivers and Fisheries Trusts of Scotland, on behalf of the project partners, have managed the Sea Trout Post Smolt Monitoring Project over the last two years. This is Scotland's largest regional monitoring project. The aims include developing an understanding of the current population status and identifying regional trends on the West Coast of Scotland for wild *Salmo trutta* (Sea Trout) and their interactions with two species of sea lice *Lepeophtheirus salmonis* and *Caligus elongates*.

During 2012, the Fisheries Trust on the West Coast gathered data from 22 monitoring sites. This involved collecting individual data from over 1000 captured sea trout. Data collected at each monitoring location included the length, weight, condition factor and predator damage of each sea trout at all monitoring locations. The data gathered for the project indicated that there were diverse trends in the status of the sea trout populations at varying locations across the west coast region. It also found for a number of locations that the 2012 data indicated a reduction in the mean regional weights and condition indices for the sea trout population compared to the 2011 samples.

All Sea Trout were examined for the presence of sea lice, which if found to be present were counted and staged as per the project methodology. Both species of sea lice were found to be present across the Scottish west coast region at varying levels. The information gathered highlights that the interactions between sea trout and sea lice are complex and potentially problematic at a number of the monitoring sites on the West Coast.

L. salmonis the most problematic species of sea lice to Sea Trout populations was identified as being present at all regional monitoring sites in 2012 and in 2011. Regionally there was a notable decrease in 2012 of the Abundance, Intensity and Median levels of *L. salmonis* compared to those recorded in 2011. However, it is significant to note that the majority of aquaculture activities relevant to the corresponding monitoring site within the study area were in their first cycle of production in 2012. To further explore the *L. salmonis* infestation pressure on wild Sea Trout populations data from each monitoring site was examined to determine if the levels of observed sea lice infection could be classed as an epizootic (Costello, 2009 and Beamish *et al*, 2009). Based on the results of calculating the threshold levels for an epizootic occurring in 2012 there are five monitoring sites that have experienced high sea lice presence levels that could potentially be categorised as epizootics.

To examine these high observed presence levels in more depth a detrimental tolerance threshold level was explored (Wells *et al*, 2006). In 2012, two monitoring sites are recorded as experiencing Sea Trout carrying potentially detrimental lice burdens.

In comparison *C. elongatus* is a sea lice species currently considered to be of lesser concern to Sea Trout populations, however it does have a potential cumulative burden with *L. salmonis*. From the samples collected in 2012 *C. elongatus* was identified as being present at 12 of the 22 monitoring sites.

The monitoring work undertaken in this project highlights the interaction issues that affect the Sea Trout populations on the West Coast of Scotland and the issues that need to be considered for management and conservation. With particular reference to the detrimental burden levels of sea lice on wild sea trout populations this project also explores how these findings can contribute to

identifying the significant challenging issues that need to be addressed through management and policy actions to protect the identified vulnerable sea trout populations.

1. Project Background

The 2012 project aims to develop an understanding of the current status and to establish regional trends on interactions between parasitic sea lice and wild fish across the West Coast of Scotland. This is a priority area of work for the Managing Interactions Aquaculture Project. The Managing Interactions Aquaculture Project is designed to support improved coordination and management of wild fisheries and stocks with the aquaculture industry. There are a number of significant priorities underpinning the work and include, the wild fish priorities of protecting sensitive and high value fresh water sites, improving practice and management at existing aquaculture sites and finally informing decisions on the location and biomass production at current and any proposed aquaculture site. To work towards achieving these strategic objectives three projects were initially identified in 2011 as key priorities and work streams within the overall Project.

These were:

- Strategic programme of post smolt sweep netting and analysis;
- Programme of genetic sampling and analysis; and
- Locational guidance and zones of sensitivity analysis.

In 2011 the programme of genetic sampling and analysis was completed and a report on this area of work is published on the RAFTS website. Into 2012 both the Strategic programme of post smolt sweep netting and analysis and the larger body of work in regards to the Locational guidance and zones of sensitivity analysis continues.

The Managing Interaction Aquaculture projects remain overseen by a Steering Group, chaired by RAFTS, which includes representatives from a range of west coast fishery trusts and boards, Marine Scotland Science and Marine Scotland Policy.

The participating fishery trusts and boards are:

- Argyll Fisheries Trust
- Argyll District Salmon Fishery Board
- Lochaber Fisheries Trust
- Wester Ross Fisheries Trust
- Wester Ross District Salmon Fishery Board
- Skye Fisheries Trust
- Skye District Salmon Fisheries Board
- West Sutherland Fisheries Trust
- Outer Hebrides Fisheries Trust
- Western Isles Salmon Fisheries Board

This paper will discuss further the continuance of the cooperative sea trout post smolt monitoring programme which was organised to monitor wild sea trout populations and sea lice levels on the west coast of Scotland. Further details on the other two Managing Interactions projects are made available on the RAFTS website¹ and are reported separately.

¹ www.rafts.org.uk

2. Methods and Site Information

2.1 Sweeping Survey Techniques and Data Analysis

All chosen monitoring sites were surveyed in accordance with the Scottish Fisheries Co-Ordination Centre (SFCC) sampling protocol, "Sea Trout Netting and Sea Lice Sampling: A Standard Sweep Netting Protocol for Management, 2009". This ensured that the project complied with current recommended standards. The data gathering was conducted by participating fisheries trusts during the months of May, June and July 2012.

Sea Trout were captured during the hours of daylight using a sweep net which was deployed from the shoreline. Trust teams using the sweep nets would either employ hand hauling techniques or deploy the net from a boat. The sweep nets used were fifty metres in length and had a standard stretched mesh size of 20 mm. All sea trout caught within the sweep were removed and anaesthetised. Under anaesthesia the length (± 1 mm) and weight (± 1 g) were recorded and where possible, a scale sample was also taken. The Sea Trout were examined for the presence of sea lice, which if found to be present were counted and staged. Sea Lice counts were classified according to the two species under investigation *Lepeophtheirus salmonis* (Krøyer) and/or *Caligus elongatus* (Nordmann). *L. salmonis* was further staged by one of three gender and life-stages which were copepodid/chalimi, pre-adult/adult and ovigerous females as per the SFCC Protocol. Additional information was also collected on any other parasites present or any predator damage to the fish.

The focus of the subsequent analysis at the monitoring sites described is on the post smolt sea trout populations and included weights, lengths, condition indices and predator damage. Further to the population analysis there will be analysis on the sea lice loadings with comparisons between the monitoring sites.

As highlighted by Hazon *et al* 2006, parasite infestations of hosts generally do not show a normal distribution of variation among individual hosts. Typically, parasite populations show "over-dispersion", or "aggregation" on certain individual hosts (i.e. many or most hosts are parasite-free, but a small number of hosts carry exceptionally heavy infestations). From a statistical viewpoint, it is inappropriate to calculate the arithmetic mean and error terms of infestation intensities if the data are not normally distributed. All lice data in the present study has therefore been log transformed prior to the calculation of the normal mean and error terms. A log transformation usually will stabilize the variance and render the error terms normal. However, calculated means and error terms were subsequently back transformed in order to allow the data to be displayed in a meaningful way. It should be noted however that the back-transformed mean will always be lower than the arithmetic mean. Ensuring that the distribution variation is normalised and appropriately accounted for is crucial to determine if the populations being monitored are experiencing lice loads that could be reported as having a detrimental impact. Analysing such lice loads appropriately can support the local management strategies and policies.

Four assessment methods were implemented to analyse and describe the sea lice distribution on the sea trout post smolt populations at the monitoring sites. These were:

- Prevalence: The percentage of fish in the sample infected by sea lice.
- Abundance: The mean number of sea lice per fish in the whole sample.

- Intensity: The mean number of sea lice per infected fish
- Abundance Median: The middle value when ranked numerically of sea lice within the population of fish.

Prevalence is an indication of the percentage of infected sea trout versus uninfected sea trout. To obtain a more comprehensive view of the distribution of sea lice amongst the sea trout sampled, abundance and intensity analysis was explored. Abundance gives an indication of the overall number of lice within the population whilst intensity provides a more accurate indication of the level of infestation on infected fish.

Finally a full range of site environmental factors was recorded at each site. On every visit to the monitoring site, water temperature, air temperature and salinity profiles were recorded. The collection of these environmental factors is important as it has been shown previously that temperature and salinity influence sea lice population dynamics (Butterworth *et al*, 2006).

The sampling data from all the Trusts was compiled by the project coordinators in a structured Access Database (2010) in preparation for analysis. Analyses of the data involved descriptive statistics and graphs which were prepared in Excel (2010).

2.2 Site Information

From the experiences of the monitoring sites undertaken in 2011 the project undertook a further refinement and assessment of selected monitoring sites in 2012. The refinement and assessment of the sites involved Trusts, Boards and Marine Scotland Science. The final network of sites for the 2012 sampling period includes twenty two sites (Figure 1). Twenty of the sites are carried on from last year and two are new sites which have not previously been sampled at. One of the new sites is located in the Lochaber Fishery Trust area and the second new site is located in the Argyll Fisheries Trust area. These two new sites were selected to improve the coverage across the west coast with sites at distance from activity fish farms. The project has a core focus of sampling efforts on the sea trout smolt run as previous studies have shown that post smolts are potentially the most vulnerable stage to sea lice infection (Finstad *et al.*, 2000).

In accordance with the SFCC protocol, the project Steering Group agreed that for each site a target of >30 fish should be included in each sample and that this sample should be collected from a minimum of two survey dates at each site. Additional survey dates and greater number of fish would further improve and enhance the sample size available for analysis and the robustness of the analysis subsequently possible.

Table 1: Monitoring Site Details.

Site ID 2012	Site Name	Fishery Trust	No of Site Visits 2012	Total Number of Sea Trout Caught in 2012
1	Carradale	Argyll	2	30
2	Loch Fyne	Argyll	2	91
3	West Riddon	Argyll	2	59
4	Dunstaffnage	Argyll	2	39
5	Goil	Argyll	2	40
6	Kinlocheil	Lochaber	4	60
7	Camas na Gaul	Lochaber	4	114
8	Sunart	Lochaber	4	1
9	Borrodale	Lochaber	4	13
10	Tong	Outer Hebrides	4	51
11	Ardroil	Outer Hebrides	3	1
12	Borve	Outer Hebrides	3	78
13	Eishken	Outer Hebrides	2	37
14	Kyles	Outer Hebrides	5	13
15	Malachait	Outer Hebrides	2	31
16	Kyle of Durness	West Sutherland	2	34
17	Polla	West Sutherland	2	126
18	Laxford	West Sutherland	2	57
19	Kinloch	West Sutherland	2	44
20	Kannaird	Wester Ross	2	103
21	Boor Bay	Wester Ross	3	9
22	Flowerdale	Wester Ross	2	42

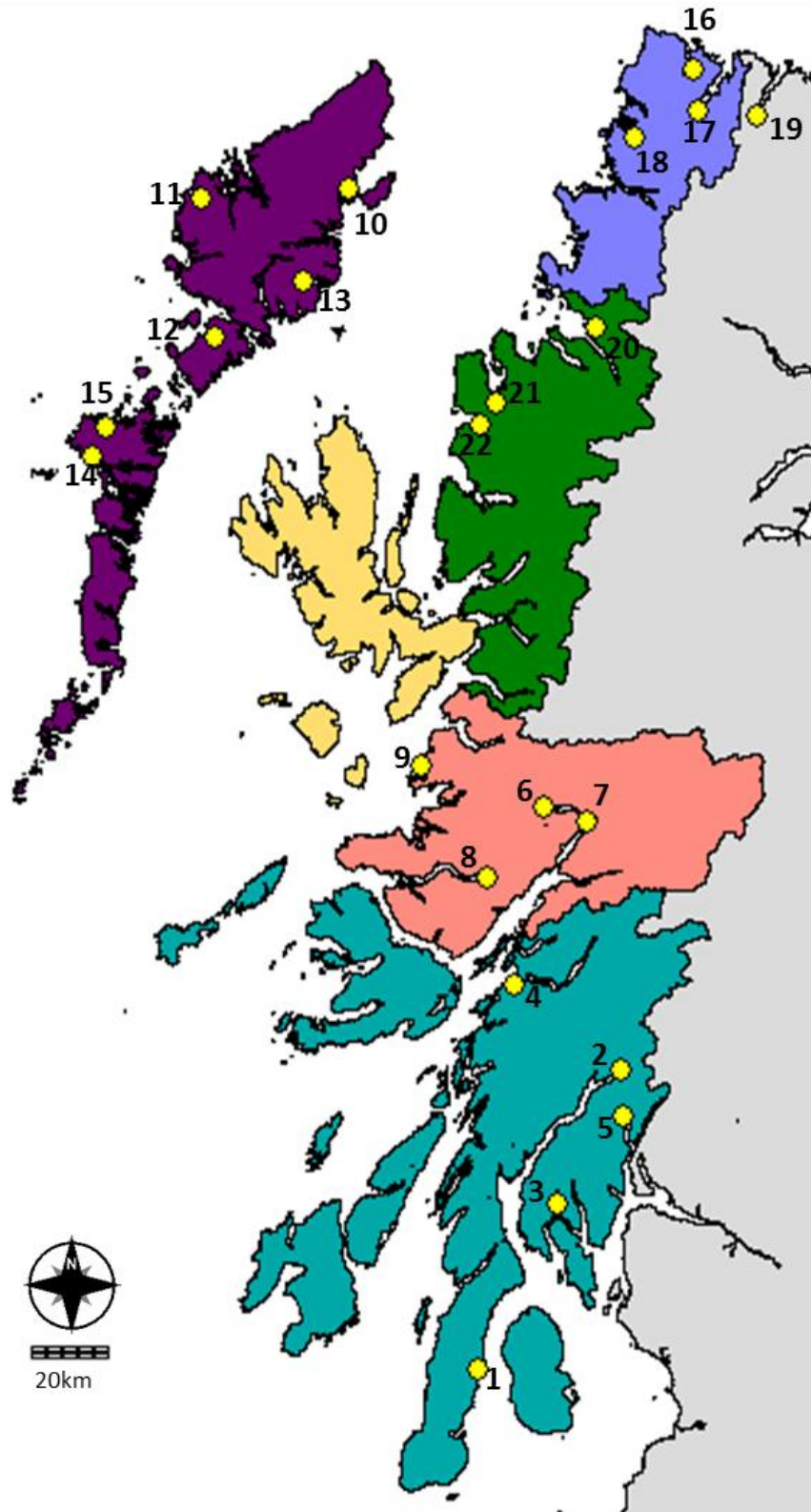


Figure 1: Geographical spread of monitoring sites sampled in 2012 (Yellow dot indicates monitoring site please see Table 1 for full site details). Trust Areas indicated as Blue = West Sutherland, Green = Wester Ross, Yellow = Skye, Pink = Lochaber, Cyan = Argyll and Purple = Outer Hebrides.

3. Sweep Netting Analysis Results

3.1. Sea Trout Analysis

In 2012 the total number of post smolts caught at each site showed some variation across the monitoring sites on the West coast of Scotland. The conditions of which the Trusts had to sample under this year have been particularly challenging with extreme dry and low water levels recorded. Under the SFCC protocol the recommended minimum sample size for statistical analysis is currently advised as thirty fish. The majority of sites did sample above this threshold number. As can be seen from Figure 2, seventeen of the initial twenty two sites achieved this minimum sample size and five sites fell below the minimum sample size. However this report does present results for all sites that recorded data even if they fell below this minimum sample size and aims to report all observation of the samples taken over the study period.

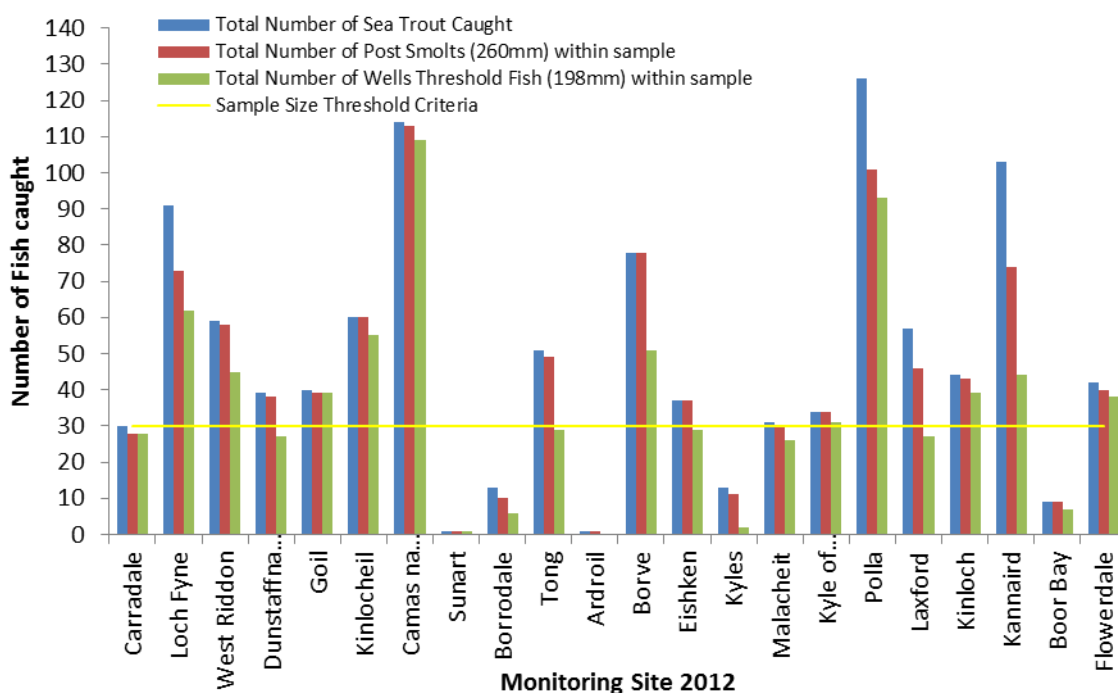


Figure 2: Total number of sea trout caught at each monitoring site including a break down to the number in sample of post smolts at 260mm threshold and 198mm threshold.

3.1.1 Length, Weight and Condition Factor

Across the monitoring sites in 2012 as observed in 2011 the sea trout were predominately under 260mm (Figure 3) and showed little variation in length across the monitoring sites. In comparison to the observed mean lengths of 2011 monitoring sites Camas Na Gaul (Lochaber), Malacleit (Outer Hebrides) , Kyle of Durness (West Sutherland), Polla (West Sutherland) and Laxford (West Sutherland) recorded a minimal reduction in mean length in 2012. Whilst monitoring sites Dunstaffnage (Argyll), Boor Bay (Wester Ross) and Flowerdale (Wester Ross) have observed lengths which are marginally up on recorded mean lengths in 2011. Finally the remaining monitoring sites have observed lengths which are equivalent to those recorded for at the monitoring site in 2011.

Unlike the sea trout post smolt length, the weight of the post smolts shows a much greater variation across the monitoring sites (Figure 4) which was also the trend observed in 2011². In 2012 the largest mean weights were recorded at Kyles (Outer Hebrides) and Boor Bay (Wester Ross), whilst the smallest mean weights were recorded at Camas Na Gaul (Lochaber) and Flowerdale (Wester Ross). In comparison to the observed mean weights of 2011 monitoring sites Camas Na Gaul (Lochaber), Malacleit (Outer Hebrides), Tong (Outer Hebrides), Polla (West Sutherland) and Laxford (West Sutherland) have recorded a notable reduction in mean weight in 2012. Whilst monitoring sites Borve (Outer Hebrides), Eishken (Outer Hebrides), Boor Bay (Wester Ross) and Flowerdale (Wester Ross) have observed weights which are greater than those recorded at these sites in 2011. Finally monitoring sites Kyles (Outer Hebrides) and Kannarid (Wester Ross) have observed weights that are equivalent to those recorded in 2011. The observed notable reduction in mean weights at a number of monitoring sites will be discussed further in section 4.

To explore the sea trout post smolt condition factor, Fultons condition factor (Ricker, 1975) was employed. This factor assumes a relationship between the weight of a fish and its length, which calculates and allows for the description of the individual fish condition. The formula for Fultons Condition Factor is:

$$K = \frac{W}{L^3}$$

K = Fulton Condition Factor

W = Weight

L = Total Length

Finally a scaling factor is implemented to bring the factor close to 1.

All monitoring sites sampled in 2012 had available length and weight data and the condition factor was calculated for all post smolts at each monitoring site and is summarised in Figure 5. As a general rule if a fish has a condition factor of 1 or above it would be considered healthy and of the twenty two monitoring sites in 2012 the calculated Fulton Condition Factor indicates six sites fall below the factor 1 level. These six sites are Kinlocheil (Lochaber), Camas Na Gaul (Lochaber), Tong (Outer Hebrides), Kyles (Outer Hebrides), Kinloch (West Sutherland) and Flowerdale (Wester Ross). It is significant to note this is an increase in monitoring sites that fall below the healthy threshold from the 2011 were information gathered over the previous study period indicted only two sites which fell below the Fulton Condition Factor which were Kinnaird (Wester Ross) and Flowerdale (Wester Ross). This observed reduction in condition factor across the monitoring sites will be discussed further in section 4.

In comparison to the observed mean condition indices of 2011 monitoring sites Camas Na Gaul (Lochaber), Tong (Outer Hebrides), Kyles (Outer Hebrides), Malacleit (Outer Hebrides) and Flowerdale (Wester Ross) have recorded a reduction in mean condition indices in 2012. Whilst monitoring sites Borve (Outer Hebrides), Eishken (Outer Hebrides), Kinnaird (Wester Ross) and Boor Bay (Wester Ross) have observed Condition Indices which are greater than those recorded at these sites in 2011. Finally monitoring sites Polla (West Sutherland) and Laxford (West Sutherland) have observed condition indices that are equivalent to those recorded at these monitoring sites in 2011.

² Please note weight data was not collected at all monitoring sites in 2011.

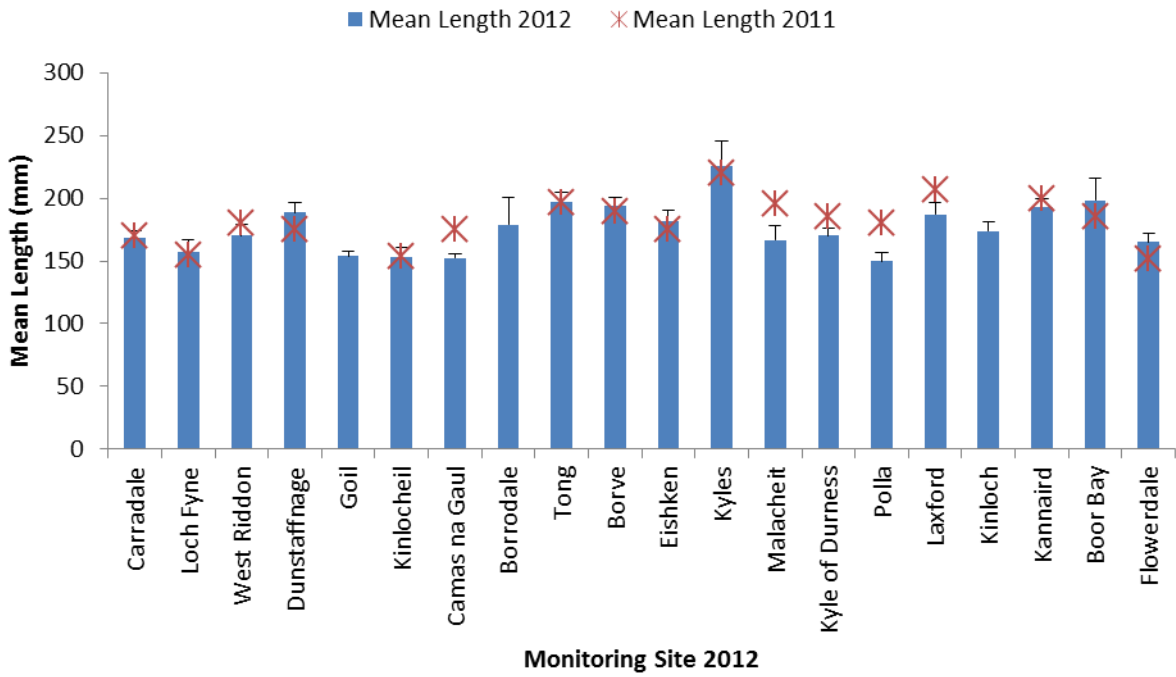


Figure 3: The mean sea trout lengths (mm) at each monitoring site.

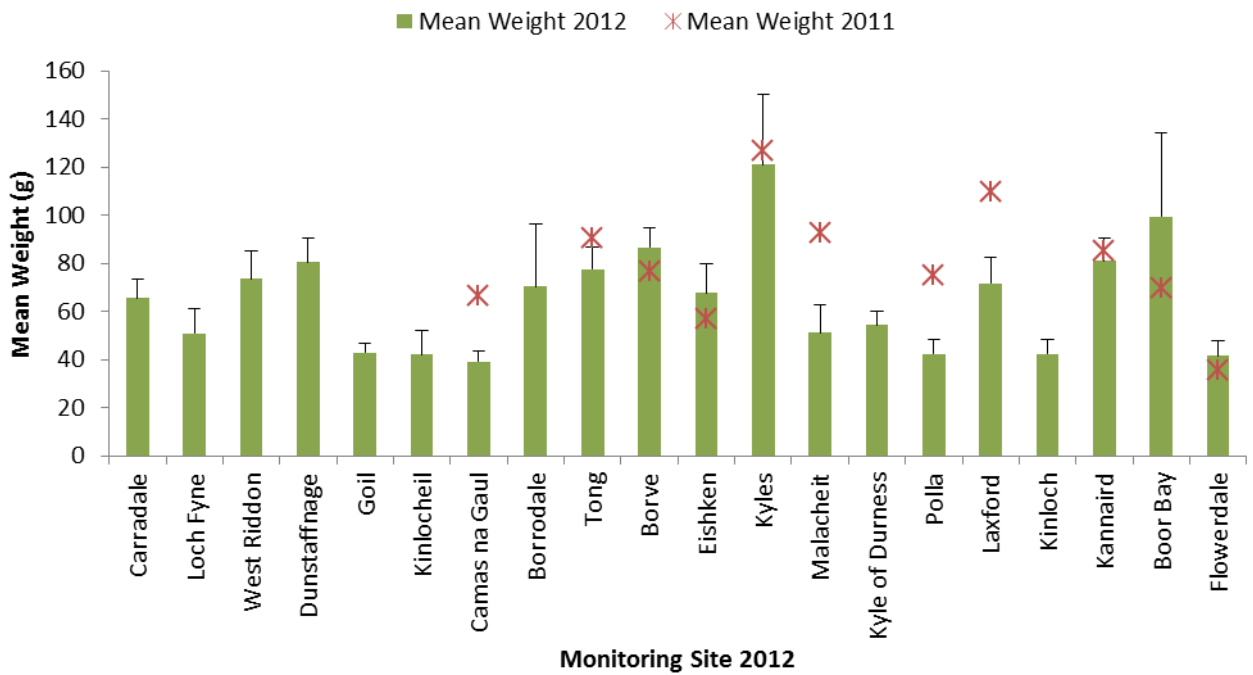


Figure 4: The mean sea trout weights (g) at each monitoring site.

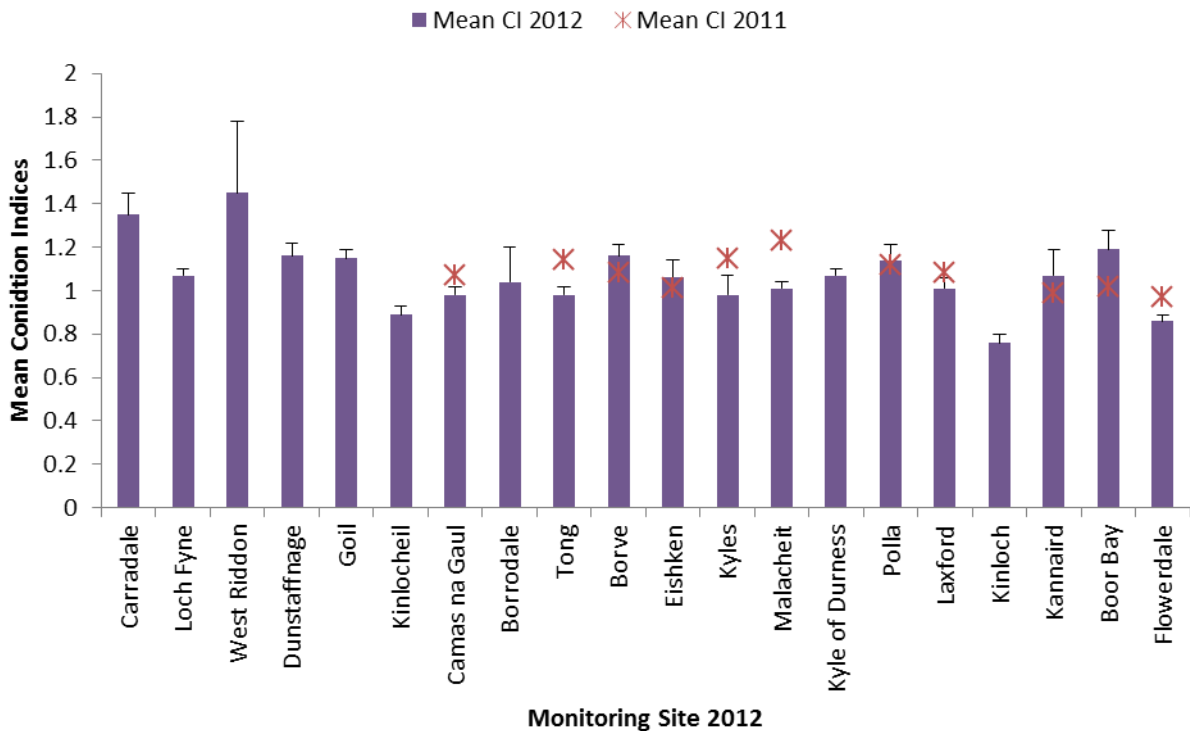


Figure 5: The mean sea trout Condition Indices at each monitoring site.

3.1.2 Predation Pressure

As with all ecosystem interactions the prey/predator relationships for sea trout is a natural process, however as identified the sea trout populations on the West coast are under pressure and declining (AST, 2011). It is important to understand the dynamics of the predation occurring. One of the dynamics relating to sea lice loadings and predation is particularly important to consider for example at sites where lice loads may be at elevated levels and weakening the fish, it may therefore be increasing a fish population's susceptibility to predation. Sea trout can encounter a range of predators throughout their life cycle. These include predators ranging from birds such as the Osprey or Heron, to mammals such as mink or otters and to marine mammals such as common and grey seals. Predation pressures are difficult to quantify and currently out with the scope of this study. It has been shown that predation by marine mammals may have a role in stock declines, but this impact is not well understood (Middlemas, *et al* 2003; Butler *et al*, 2006; Butler *et al*, 2011).

The scope of the study here is limited to examining whether predation could be identified as occurring or not occurring. There are no conclusions drawn on the detrimental level of impact on the sea trout populations under study may be experiencing due to predation. Whilst examining the sea trout for physical damage, if observed using the expert opinion of the biologists it was categorised by the pattern of damage observed to the likely predator species and the percentage level of damage/scale loss was also recorded by the Fisheries Biologist. In 2012, predation was observed at ten sites across the West Coast (Figure 6).

From the predation recorded in 2012 the majority were noted from birds. In comparison to predation damage recorded in 2011 it is interesting to note that nine sites where predation was recorded in 2012 are indicated at lower levels of predation than was recorded in 2011. Whilst two sites in Argyll (Carradale and Dunstaffnage) have recorded slight increases in predation damage than those recorded in 2011. Finally in 2012 predator damage was not observed at five sites have had recorded predator damage on post smolts in 2011. It is recommended that further studies into predation pressure on the sea trout post smolts should be explored to further understand the pressure dynamics being experienced across the monitoring sites.

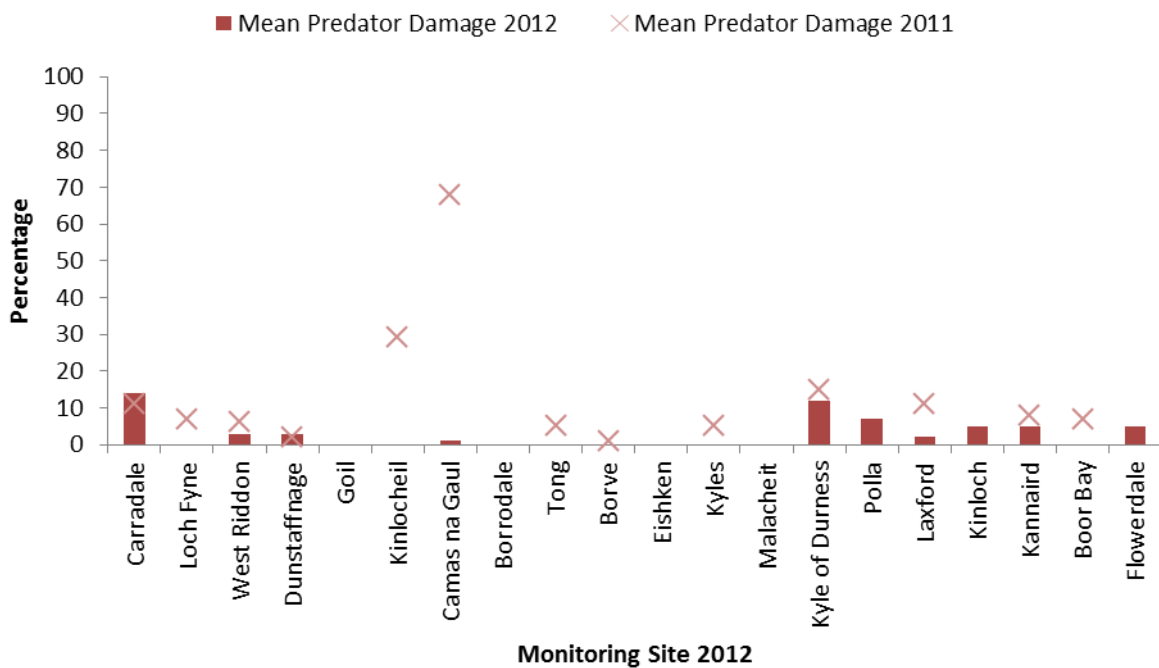


Figure 6: The percentage sea trout predator damage recorded at each monitoring site.

3.2 Sea Lice Analysis

3.2.1 *L. salmonis* Copepodid and Chalimi life Stages.

The life cycle of *L. salmonis* comprises of five distinct phases and ten life stages (Schram, 1993). The *L. salmonis* 3rd and 4th distinct phases which are the immature life stages under examination here are known as the Copepodid and Chalimi stages. These initial stages include the four stages of immature sea lice which attached to the sea trout by a frontal filament around which they feed on the fish mucus and skin. These immature stages are the smallest and are often extremely hard to discern on the fish host and as a result they are often underestimated in counts (Tully, 1989).

It can be extremely hard to determine significant levels for each of the sites with no information on background levels of sea lice data available. From the data collected in 2012 and considering the individual sites compared to the calculated regional mean prevalence of 34, the regional mean of 1.78 for abundance and a mean regional intensity of 5.18 it can be seen that the majority of sites reported and recorded levels of Copepodid/Chalimi presence below the regional mean for

prevalence, abundance and intensity (Figure 7 and Figure 8). However there are six sites which could be classed as experiencing elevated levels of Copepodid/Chalimi presence in 2012 when considering the regional means for abundance, intensity and prevalence these are West Riddon (Argyll), Goil (Argyll), Borradale (Lochaber), Borve (Outer Hebrides), Kinnaird (Wester Ross) and Boor Bay (Wester Ross). To ensure that the regional means are not being representing by any particularly high outliers the median which is less influenced by outliers was explored. As can be seen from Figure 8 five of the sites, West Riddon (Argyll), Goil (Argyll), Borve (Outer Hebrides), Kinnaird (Wester Ross) and Boor Bay (Wester Ross) are indicated as experiencing elevated levels in 2012. However, the sixth site Borradale (Lochaber) has recorded a below the regional median and therefore less likely to be experiencing elevated mobile life stages.

In comparison to the observed results from the 2011 study period, the recorded mean regional prevalence for *L. salmonis* Copepodid and Chalimi stages has increased from that recorded in the 2011 study period (Figure 7). Only one monitoring site Kyle of Durness (West Sutherland) has recorded mean prevalence levels that are equivalent to the 2011 study period. All other monitoring sites in 2012 have either significantly increased or decreased in comparison to those prevalence levels recorded in 2011.

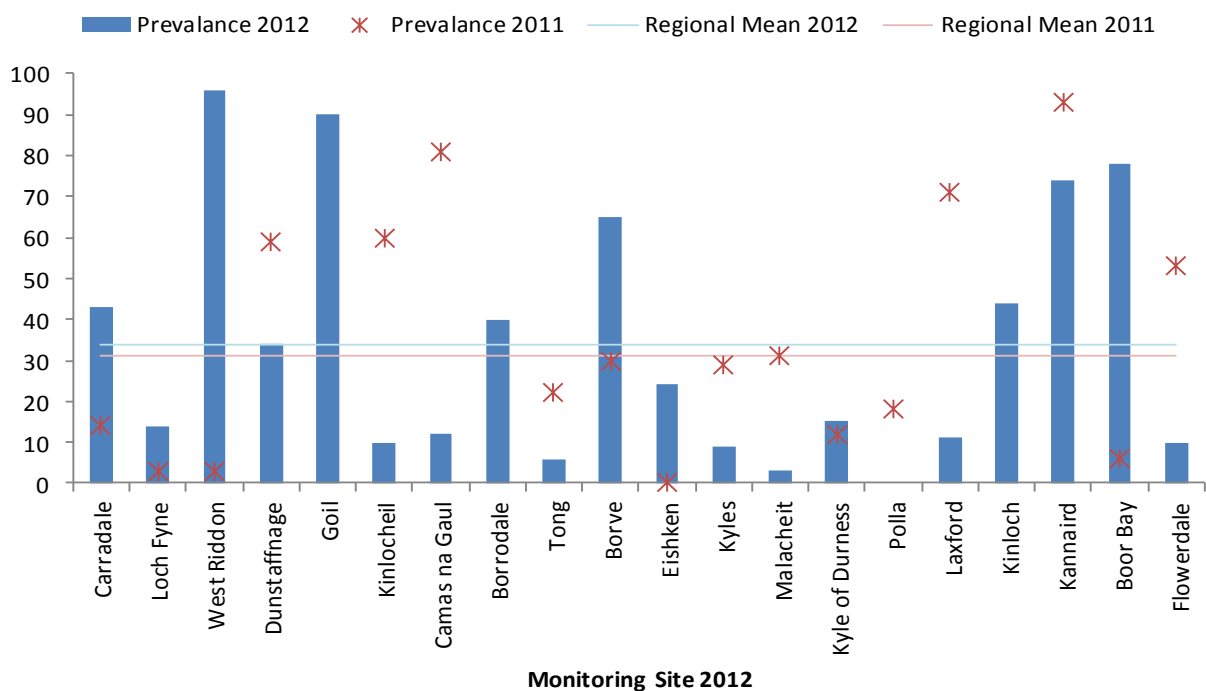


Figure 7: *L. salmonis* Copepodid/ Chalimi Prevalence and Regional mean results for 2011 and 2012.

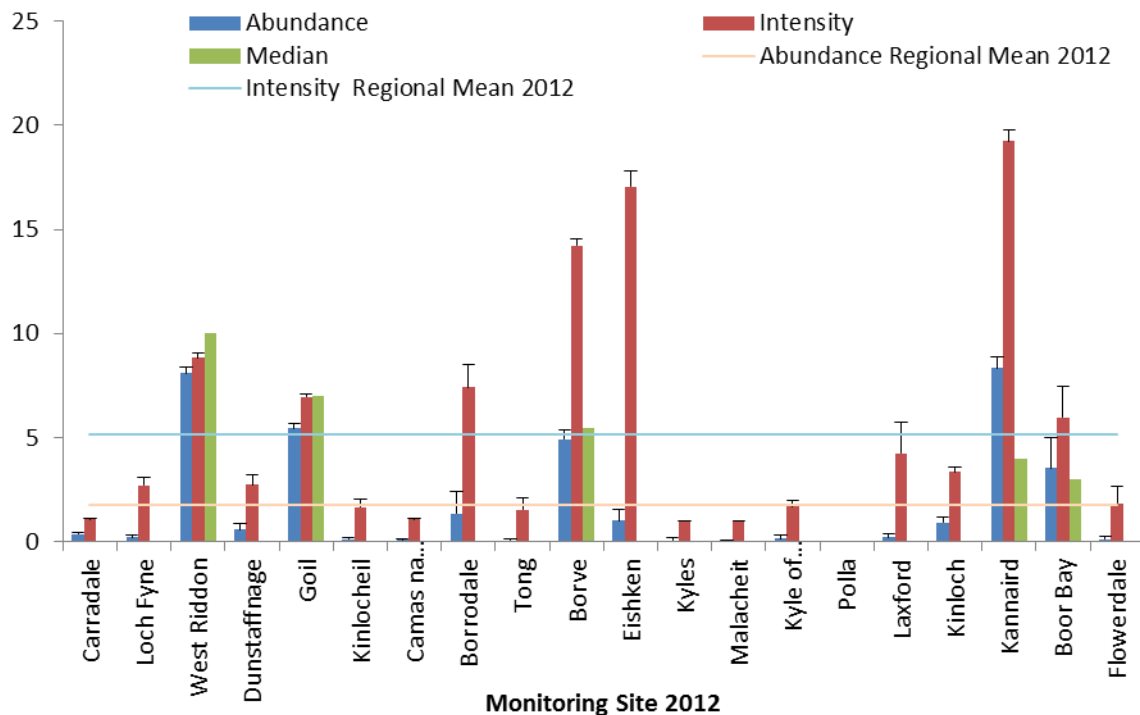


Figure 8: Back Transformed means in 2012 for Abundance, Intensity and Median for Copepod/Chalimi at each monitoring site (including 95% confidence intervals).

3.2.2 *L. salmonis* Mobile life Stages.

The *L. salmonis* stages under examination here are commonly referred to as the mobile life stages, which includes the two pre-adult stages of the male and female. The adult life stage here includes the adult male and female (without eggs strings). These life stages are easier to identify as they are larger and move freely to feed over the fish mucus and skin.

From the data collected in 2012 and considering the individual sites compared to the calculated regional mean of 43 for prevalence, a mean regional abundance of 1.02 and a mean regional intensity of 2.48. It can be seen that the majority of sites reported and recorded levels of preadult and adult presence below the regional mean for abundance, intensity and prevalence (Figure 9 and Figure 10). However there are six sites which could be classed as experiencing elevated levels of preadult and adult presence when considering the regional mean for prevalence, abundance and intensity. These are West Riddon (Argyll), Goil (Argyll), Borrodale (Lochaber), Borve (Outer Hebrides), Kinloch (West Sutherland) and Boor Bay (Wester Ross). There is a potential for the regional means to be representing particularly high outliers, therefore the median which is less influenced by outliers was explored to confirm the indicative elevated levels. As can be seen from Figure 10 when exploring the regional mean median all six sites are indicating as experiencing elevated levels.

In comparison to the observed results from the 2011 study period, the recorded mean regional prevalence for *L. salmonis* mobile life stages has increased from that recorded in the 2011 study period (Figure 9). Two monitoring site Kinlocheil (Lochaber) and Kyle of Durness (West Sutherland) have recorded mean prevalence levels that are equivalent to the 2011 study period. All other

monitoring sites in 2012 have either significantly increased or decreased in comparison to those prevalence levels recorded in 2011 (Figure 9).

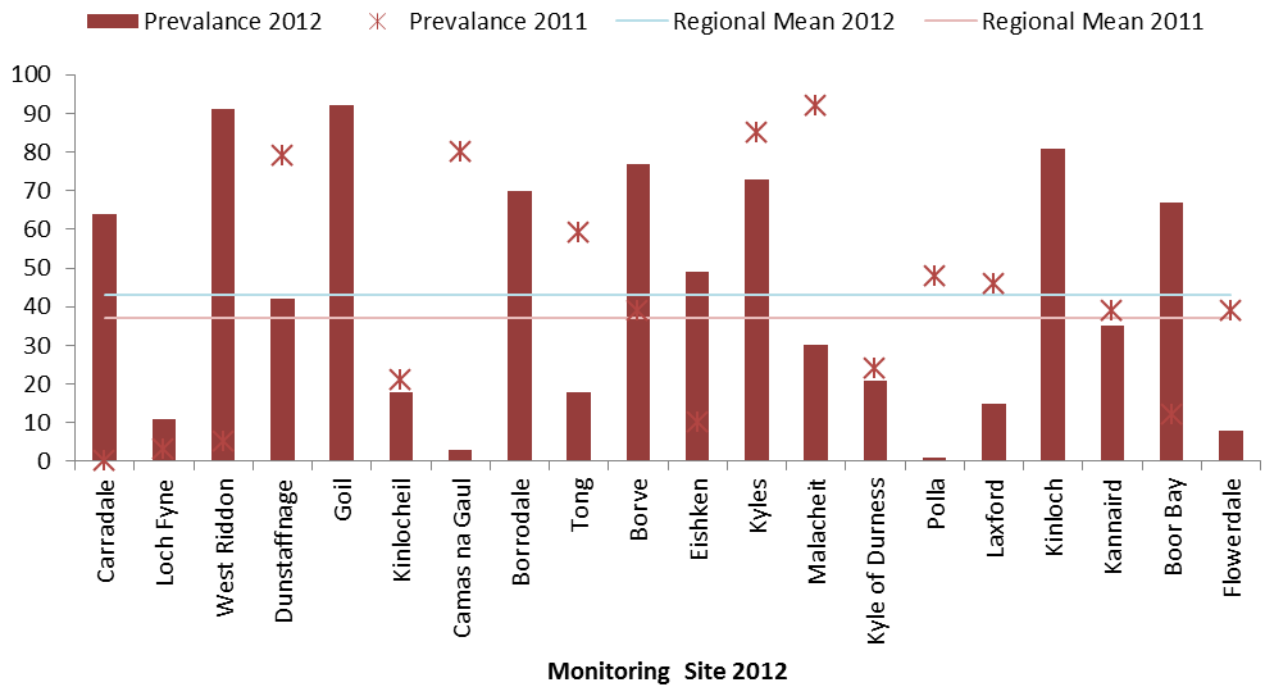


Figure 9: *L. salmonis* Mobile life Stages Prevalence and Regional mean results for 2011 and 2012.

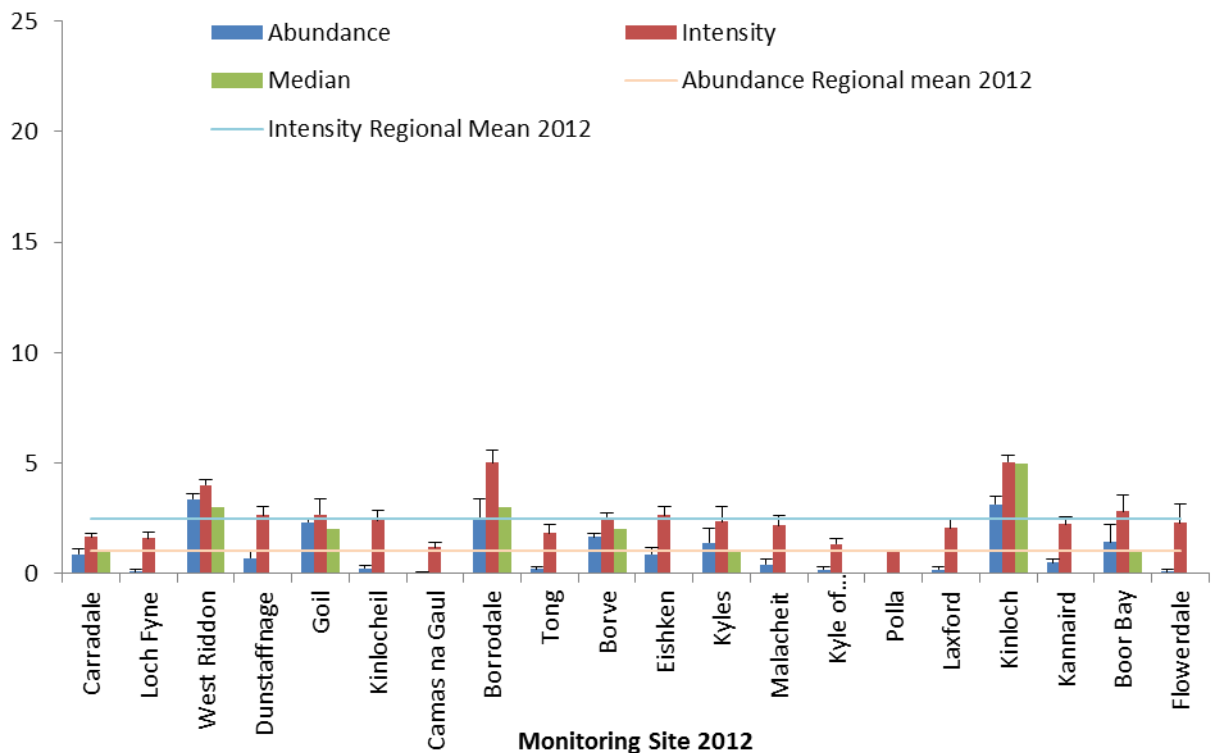


Figure 10: Back Transformed means in 2012 for Abundance, Intensity and Median results for Preadult/Adult at each monitoring site (including 95% confidence intervals).

3.2.3 *L. salmonis* Ovigerous Female life Stage.

The final *L. salmonis* life stage examined on the post smolt sea trout was the Ovigerous female. Ovigerous females are easily identified by two visible egg strings which can average carry a total of a thousand eggs.

From the data collected in 2012 and considering the individual sites compared to the calculated regional mean of 9 for prevalence, a mean regional abundance of 0.09 and a regional mean intensity of 1.19 it can be seen that the majority of sites reported and recorded levels of ovigerous female presence below the regional mean for prevalence, abundance and intensity (Figures 11 and 12). Only three sites could be classed as experiencing elevated levels of ovigerous female presence when considering the regional mean for prevalence, abundance and intensity these are Carradale (Argyll), Borrodale (Lochaber) and Tong (Outer Hebrides). There is a potential for the regional means to be representing particularly high outliers, therefore the median which is less influenced by outliers was explored to confirm the indicative elevated levels. As can be seen from Figure 12 none of the three sites have recorded a median which is elevated and therefore these sites are unlikely to be experiencing elevated mobile life stages.

In comparison to the observed results from the 2011 study period, the recorded mean regional prevalence for *L. salmonis* Ovigerous female stage has decreased from that recorded in the 2011 study period. Five monitoring site Loch Fyne (Argyll), West Riddon (Argyll), Laxford (West Sutherland), Kannaird (Wester Ross) and Flowerdale (Wester Ross) have recorded mean prevalence levels in 2012 that are equivalent to the recorded means in the 2011 study period. Six monitoring sites have significantly decreased and nine monitoring sites have marginally increased mean prevalence's in comparison to those prevalence levels recorded in 2011 (Figure 11).

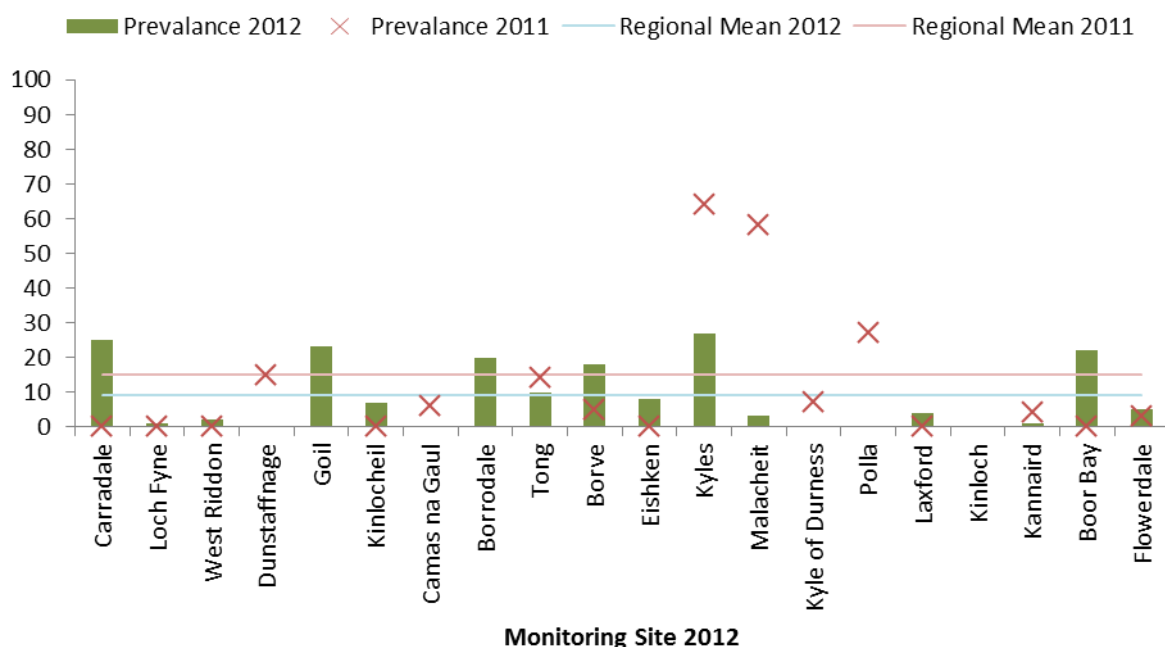


Figure 11: *L. salmonis* Ovigerous Female life Stage Prevalence and Regional mean results for 2011 and 2012.

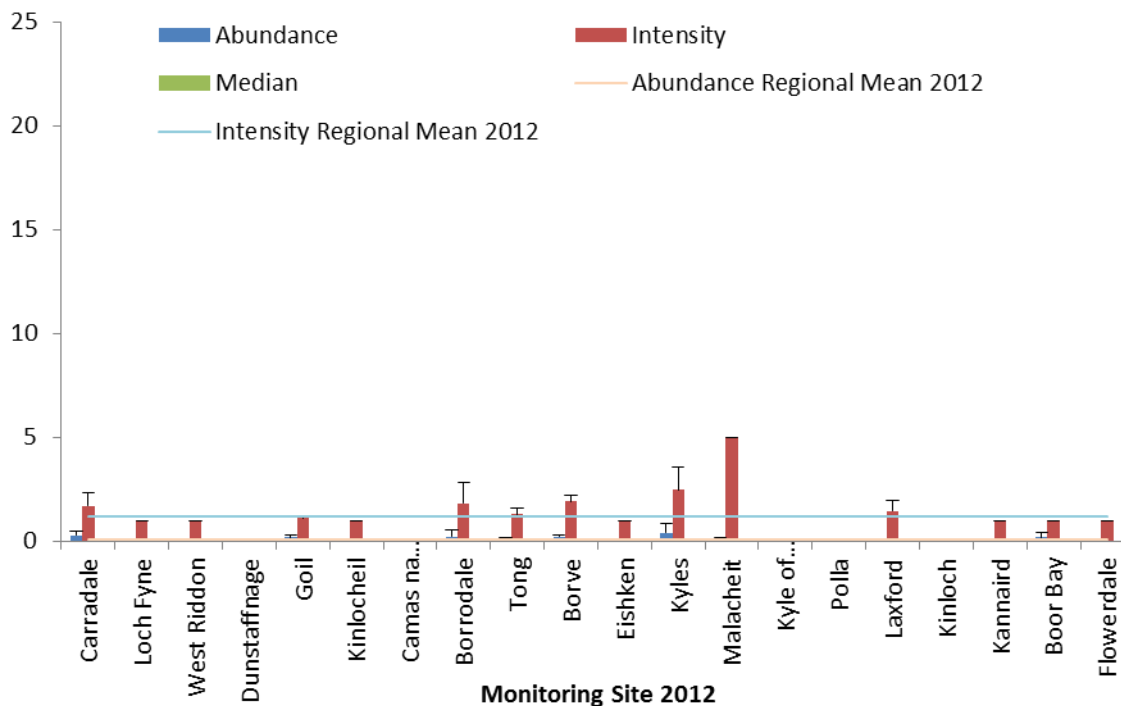


Figure 12: Back Transformed means in 2012 for Abundance, Intensity and Median results for *L. salmonis* ovigerous females at each monitoring site (including 95% confidence intervals).

3.2.4 *L. salmonis* all life Stages.

A final examination of the total counts of the all the *L. salmonis* life Stages was under taken. Overall the majority of the monitoring sites sampled experienced low levels of *L. salmonis* presence when considering the calculated regional mean for prevalence of 52, a regional mean for abundance of 2.44 and a regional mean intensity of 4.33 in 2012 (Figures 13 and 14). There are seven sites which indicate elevated presence levels in comparison to these regional means which are West Riddon (Argyll), Goil (Argyll), Borrodale (Lochaber), Borve (Outer Hebrides), Kinloch (West Sutherland), Kinnaird (Wester Ross) and Boor Bay (Wester Ross). There is a potential for the regional means to be representing particularly high outliers, therefore the median which is less influenced by outliers was explored to confirm the indicative elevated levels. As can be seen from Figure 14 all five of the sites West Riddon (Argyll), Goil (Argyll), Borrodale (Lochaber), Kinloch (West Sutherland), Kinnaird (Wester Ross) and Boor Bay (Wester Ross) are indicated as experiencing elevated levels. However, the sixth site Borve (Outer Hebrides) has recorded a below the regional median and therefore less likely to be experiencing elevated total *L. salmonis* presence. Further exploration of these results and their potential detrimental impacts can be found in section 4.

In comparison to the observed results from the 2011 study period, the recorded mean regional prevalence for total *L. salmonis* stages in 2012 (52%) is equivalent to that recorded mean regional prevalence from 2011 (50%). Nonetheless, it is important to note that no monitoring sites recorded mean prevalence levels in 2012 which could be described as equivalent to those recorded in the 2011 study period. As such although the yearly recorded prevalence is static the site by site sea lice

levels are showing much more variability between the two years of study. Six monitoring sites have significantly increased and eleven monitoring sites have significantly decreased mean prevalence's in 2012 in comparison to those prevalence levels recorded at the same monitoring sites in 2011 (Figure 13).

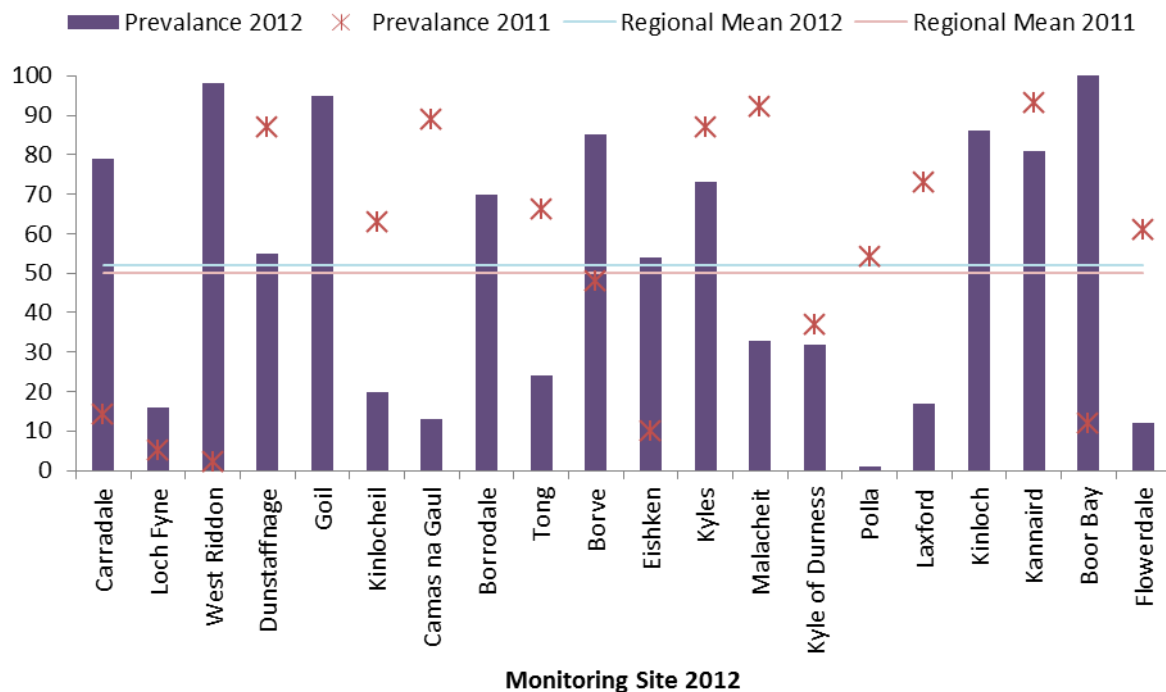


Figure 13: *L. salmonis* all life Stages Prevalence and Regional mean results for 2011 and 2012.

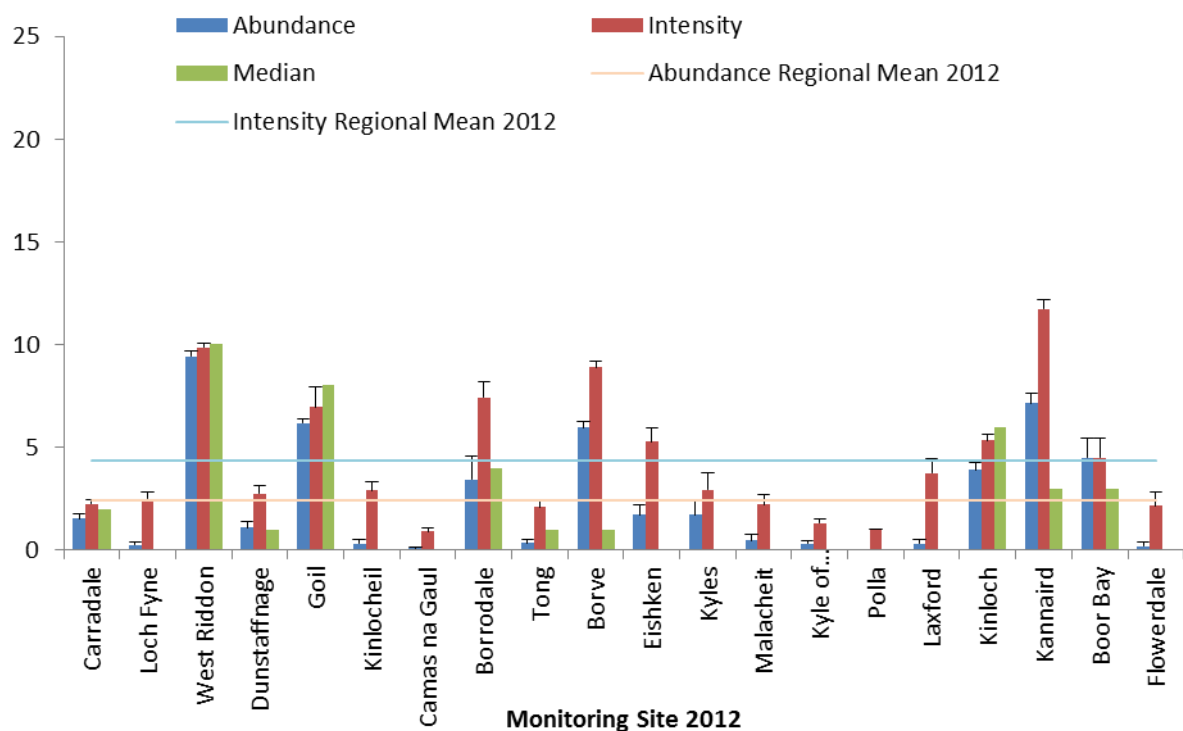


Figure 14: Back Transformed means in 2012 for Abundance, Intensity and Median results for all *L. salmonis* stages at each monitoring site (including 95% confidence intervals).

3.2.5 *C. elongatus* all life Stages.

Caligus elongatus is much smaller sea lice species, lighter in colouration and a host generalist (Wootten *et al.*, 1982) that has been recorded on over eighty host species (Kabata, 1979). The *C. elongatus* life cycle has less stages than *L. salmonis* as it moults directly from chalimus IV to the adult stages (Piasecki, 1996). Whilst currently of lesser concern in Scotland than the sea louse *L. salmonis*, *C. elongatus* is present and does have the potential to become a problem which should not be underestimated. Bergh *et al.*, 2001 reported high intensity *C. elongatus* infestations, and consequentially severe head lesions, were reported for juvenile farmed halibut *Hippoglossus hippoglossus*. As a host generalist there are possibilities in Scotland that if presence levels become elevated, farmed and wild fish could experience detrimental problems from *C. elongatus*.

From the data collected throughout the monitoring sites in 2012 *C. elongatus* was identified as being present in all five Trust areas. It can be extremely hard to determine significant levels for each of the sites with no information on background levels of sea lice data available. From the data collected in 2012 and considering the individual sites compared to the calculated regional mean of 9 for prevalence, a mean regional abundance of 0.13 and a regional intensity mean of 1.01. Where this sea lice species was identified as present, its levels varied across the monitoring sites. Four monitoring sites Carradale (Argyll), Kyle of Durness (West Sutherland), Kinloch (West Sutherland) and Boor Bay (Wester Ross) have elevated presence levels in comparison to the regional means for prevalence, abundance and intensity (Figures 15 and 16). There is a potential for the regional means to be representing particularly high outliers, therefore the median which is less influenced by outliers was explored to confirm the indicative elevated levels. As can be seen from Figure 16 only one monitoring site Boor Bay (Wester Ross) is indicated as experiencing elevated levels. However, the three remaining monitoring sites Carradale (Argyll), Kyle of Durness (West Sutherland) and Kinloch (West Sutherland) have recorded below the regional median and therefore less likely to be experiencing elevated total *C. elongatus* presence levels.

In comparison to the observed results from the 2011 study period, the recorded mean regional prevalence for total *C. elongatus* stages in 2012 (9%) is equivalent to that recorded mean regional prevalence from 2011 (10%). Eight monitoring sites recorded mean prevalence levels in 2012 which could be described as equivalent to those recorded in the 2011 study period. Five monitoring sites have significantly decreased and four monitoring sites have increased recorded mean prevalence's in comparison to those prevalence levels recorded at the same monitoring sites in 2011 (Figure 15).

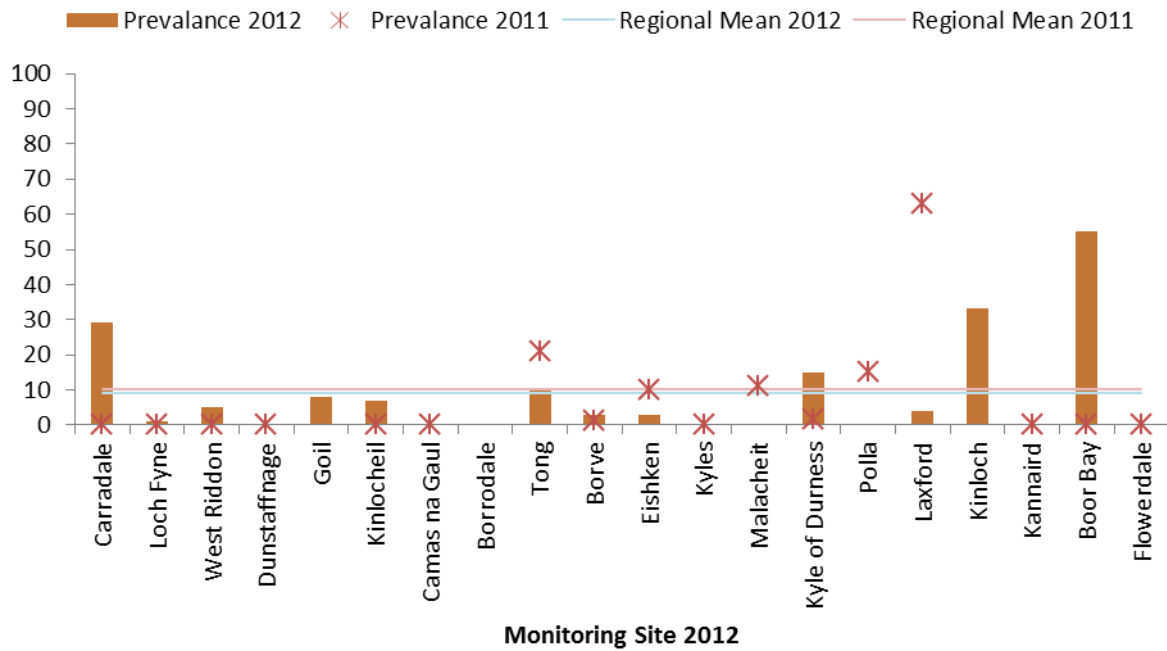


Figure 15: Prevalance and Regional mean results for 2011 and 2012.

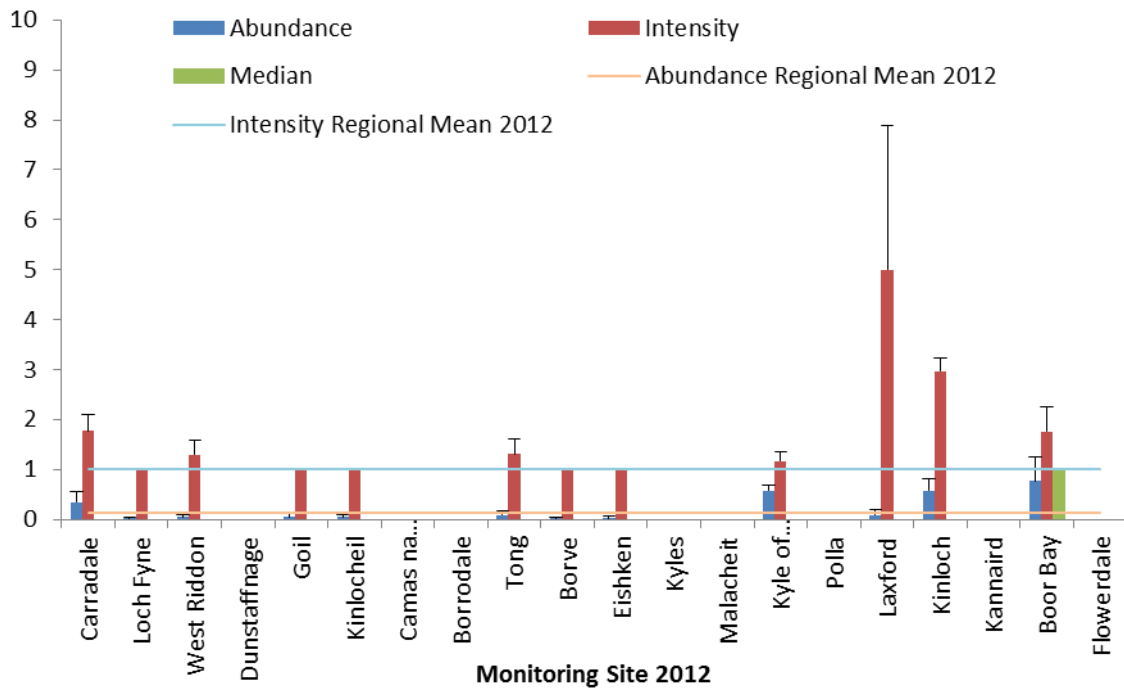


Figure 16: Back Transformed means in 2012 for Abundance, Intensity and Median results for all *C. elongatus* stages at each monitoring site (including 95% confidence intervals).

4. Discussion

The results of the post smolt sea trout populations indicate that the mean lengths remain in line with the predicted results and those recorded in 2011. The greater variation in recorded mean weights across the monitoring sites during the 2-year period is noted and warrants ongoing monitoring and further investigation. This weight variation is demonstrated by the significant recorded decrease in weights of the post smolts at a number of monitoring sites in 2012 compared to those recorded in 2011. This is also coupled with the comparable observed reduction in condition indices and a reduction in lice loadings at these monitoring sites. It should be noted that previous studies have indicated there may be a relationship to sea lice loadings and juvenile host weight (Jones and Nemec 2004). Previous work has proposed that observed reductions in sea trout post smolt weights and associated lower lice loadings could be attributed to the potential residence time within the marine environment (Brooks, 2005). Sea Trout post smolts will gain weight at a higher rate with increased residency within the marine environment, which also consequentially is the area of exposure to infection from sea lice. It is recognised that there may be a number of other localised environmental factors also playing a part in the observed reduction in infection levels and weight results in this study (Amundrud and Murray 2009; Penston *et al*, 2011). The sampling period and the stages of the lice observed in 2012 were comparable to those observed in 2011. This work is in the early stages and it is not yet possible to draw definitive conclusions on the data from 2012 which demonstrated the reduction of weight, condition indices and lower lice levels compared to the 2011 results.

Of the twenty two monitoring sites, ten recorded low levels of damage from predation and overall there was a reduction in the observed predation damage in 2012 compared to that recorded in the 2011 study period.

To fully understand the implications of the sea lice presence recorded at the monitoring sites and whether or not detrimental impacts were being experienced further analyses were performed based on the results of previous studies.

4.1 Exploring the pressures from Sea Lice on wild sea trout populations.

A number of factors need to be considered when analysing the results collected at the monitoring sites. Sweep netting studies may over- or under-estimate the levels of lice on wild fish. It is sometimes impossible to sample those fish which have succumbed to heavy infestation loads and therefore such fish will not be sampled potentially leading to an underestimate of the true lice levels. Equally, it is possible that those fish with no lice, or small levels of lice are better able to evade the net than fish with higher lice levels, potentially leading to overestimates. Therefore presenting a true reflection of infestation levels on the sea trout population as a whole is problematic and leads to an inherent difficulty in drawing meaningful conclusions on threshold levels and their impact on sea trout populations (Middlemas *et al.*, 2010). As long as these inherent difficulties are presented and considered it is possible to draw conclusions that can be attributed to the population and inform local management strategies and policies.

To further explore the sea lice infestation pressure on wild sea trout populations data from each monitoring site was examined to determine if the levels of observed sea lice infection could be classed as an epizootic. Sea lice epizootics are characterised by unusually high infestations that are

maybe fatal and although currently rare in Scotland they have previously been reported (Butler, 2002). Epizootics recorded on sea trout in Europe and Pacific salmon in British Columbia tend to have over 60% prevalence and more than 5 lice per fish (Costello, 2009 and Beamish *et al*, 2009).

Based on the results of calculating threshold levels for an epizootic occurring in 2012 there are five sites that have experienced sea lice levels that could potentially be categorised as epizootics (Figure 17). This however, is not the final picture as this is only indicates that these sea trout populations are experiencing heavy, large infestations and further analysis is required to determine if these high observed levels are having a detrimental impact. To examine these high levels in more depth a tolerance threshold level was explored.

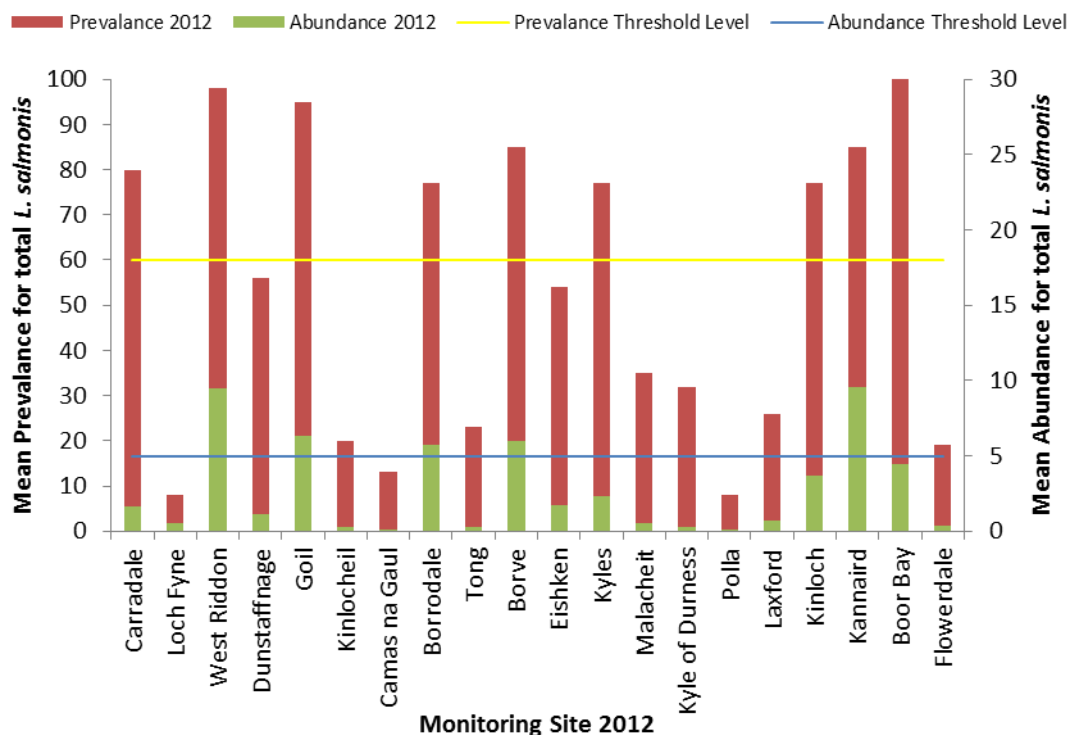


Figure 17: Prevalence and Abundance results for all life stages at each monitoring site in 2012. The Costello 2009 threshold levels for identifying epizootics are highlighted on the graph by a solid yellow line for the prevalence threshold and a solid blue line for the abundance threshold.

The threshold level for impact to be explored is from Wells *et al.* (2006) where this study found that abrupt changes in a range of physiological parameters occurred at thirteen mobile lice per fish (weight range 19-70g). This level could be detrimental to the fish host. It was suggested within this study that a management strategy should be applied if the populations are experiencing more than 13 mobile lice per fish. The lice figures used in this analysis were all mobile stages and the proportion of chalimi converted into the expected number of mobile lice. To calculate the likely survival rate of chalimi to adult stages Bjørn and Finstad (1997) recommended survival rate of 0.63 which was implemented. Only those fish below 198mm (the equivalent of 70g) were considered in this analysis. It was also deemed appropriate only to consider monitoring sites that have sample sizes of thirty fish or greater.

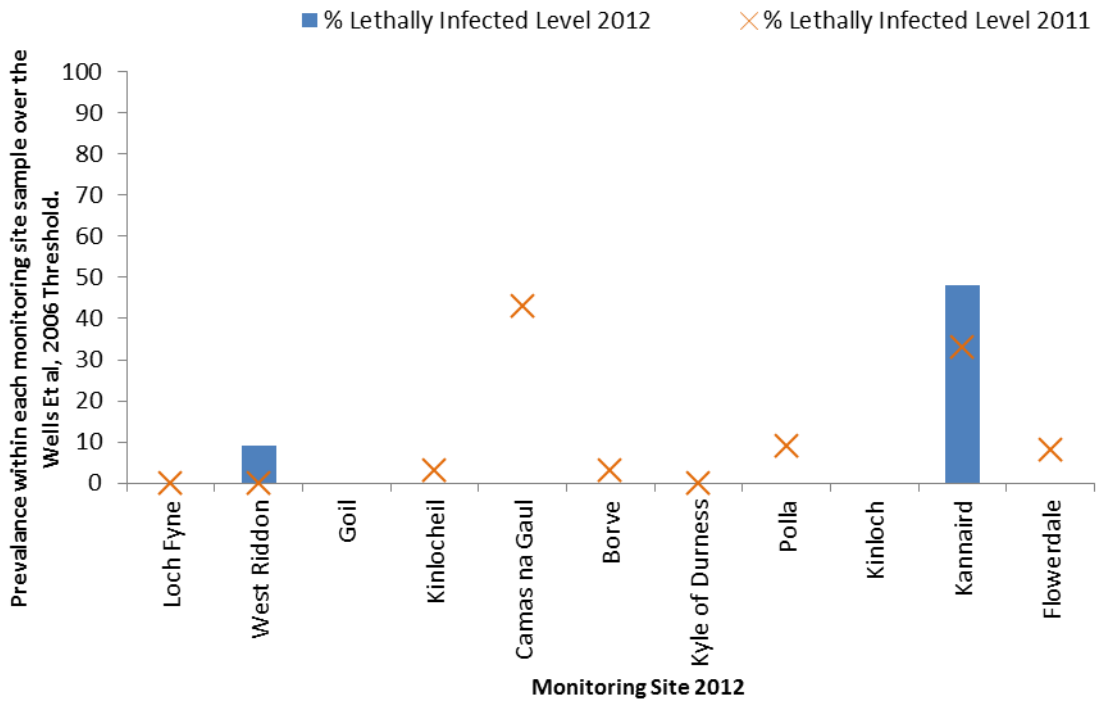


Figure 18: Percentage of fish within each monitoring site sample which has been identified over the Wells et al, 2006 threshold.

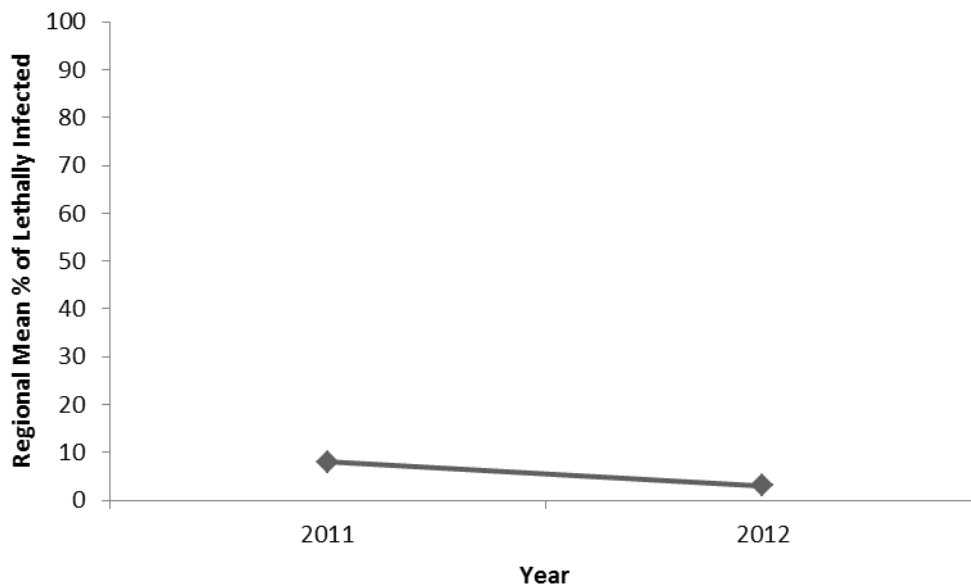


Figure 19: Total regional mean percentage of sea trout post smolts lethally infected over the period 2011 to 2012.

Within each of the monitoring samples the percentage of individual fish in each sample that appeared over the threshold and therefore more likely to be carrying a detrimental sea lice burden was identified for each monitoring site (Figure 18). In 2012, only two sites are recorded as experiencing fish carrying detrimental lice loadings. One monitoring site in Wester Ross (Kinnaird) which has 48% of the sample carrying detrimental lice loads. The second site in Argyll (West Riddon)

has experienced less than 10% of the sample recorded as carrying detrimental loads. In comparison, to these two sites all other sites with a valid statistical sample size recorded no fish carrying detrimental lice loadings. In comparison to the observed results from the 2011 study period from Figure 19 it can be seen that there is a reduction in the total regional mean percentage of sea trout post smolts lethally infected.

There is currently no guidance on the acceptable proportion of fish exceeding the Wells *et al* (2006) threshold. Although the EU project “Sustainable Management of Interactions between Aquaculture and Wild Salmonid” Hazon *et al* (2006) propose :

“that a level of 10% or fewer of wild sea trout in any given population in Ireland bearing total infestations of ≥ 13 lice • fish-1 should be adopted as indicative of a satisfactory or acceptable lice loading. Within any given sea trout stock, frequencies of heavily-infested juvenile sea trout (i.e. those ≥ 13 lice • fish-1) $>10\%$ should perhaps be considered a cause for concern.”

For the Scottish context, identification and adoption of a universally accepted level for the acceptable proportion of lice loadings would support policy development and more effective local management strategies. However this would require further work to develop a sound understanding of the sea trout population dynamics on the West Coast of Scotland. Work has begun to achieve this aim with sites at greater distance added to the suite of monitoring sites in 2012 and further refinements will be undertaken as the managing interactions monitoring work goes forward into 2013.

In conclusion when considering the epizootic threshold (Costello, 2009) and the *L. salmonis* mobile threshold (Wells *et al*, 2006), it is possible to identify the post sea trout populations in the study areas that are under pressure from detrimental sea lice loadings and where management strategies are required to support the reduction of sea lice burdens on the post smolts. However, it should be noted that the detrimental impact from sea lice has concentrated solely on one species *L. salmonis* in this study. At seven of the monitoring sites in 2011 and twelve monitoring sites in 2012 *C. elongates* was identified as present and although not seen as such a serious problem species as *L. salmonis* the relationship and the likely additive effect of the two species occurring together merits further exploration in the future.

4.2 Managing Interactions

The complex interactions between sea lice levels on wild sea trout populations and those observed at active fish farm sites remains a highly contentious issue. The data and information gathered in preliminary work to the current project has helped to inform the wider scientific debate. Middlemas *et al*, 2012 collated and analysed the West Coast Fisheries Trust sweep netting data from 2003 to 2009 and concluded that ;

“the proportion of wild sea trout with potentially damaging levels of sea lice infestations on the West Coast of Scotland was related to their fork length, distance to the nearest farm and the weight of salmon on that farm”.

The study was able to predict that the maximum range of effect of sea lice from farms is approximately 31km. There remains an inherent uncertainty with this estimation of distance due to the previous study being focused solely on localised investigations. Following on from this work, in

2011, the subsequent project undertaken by RAFTS and its project partners introduced significant refinements. These included the coordinated strategic West Coast Region focus of this project, which also now includes sampling of monitoring sites at greater distances and on the North Coast. The data collected in this project is available to Marine Scotland Science and it is envisaged that the development of the new data set will enable some of the questions and uncertainties identified in the previous work to be further explored and definitive conclusions drawn.

4.2.1 Monitoring Site comparisons to nearest active Fish Farm.

Data was obtained from the Scottish Environment Protection Agency on the nearest active fish farms to the monitoring sites. Seventeen monitoring sites that were surveyed in both 2011 and 2012 are assimilated into this analysis. The year of production of the nearest active farm sites in 2011 were, one fish farm site was fallow, two were in first year of production and fourteen were in second year of production. In comparison for 2012 these active fish farm sites, none were in a fallow period, ten sites were in first year of production and seven sites were in second year of production.

In Scotland fish farm production cycles are typically carried out over a two year period. Throughout the production cycles the cage pen depth is static, as such over the two year period fish weight and surface area rises. The significances of this are that the surface area of fish per cubic metre of water will also increase over time (Heunch *et al*, 2003). It is also well documented that into the second year of production on fish farms there will be a greater level of sea lice present (Revie *et al*. 2002; Lees *et al*. 2008). Further to this Middlemas *et al* (2010) has identified a relationship pattern that indicates connectivity between local fish farm production cycles and the infestations levels of wild sea trout smolts.

As documented earlier (Figure 19) there has been a recorded decrease in the total regional mean percentage of sea trout post smolts lethally infected between 2011 and 2012. This observed decrease is in line with a reduction in the number of fish farms in second year of production nearest to the monitoring sites. In 2011 there were 82% of the nearest fish farms to the seventeen monitoring sites in second year of production whilst in 2012 there were 41% of the nearest fish farms to the seventeen monitoring sites in second year of production. An increasing infestation pattern can be observed over the production cycles from the data collected in 2011 and 2012 (Figure 20). Where 42% of the monitoring sites record an increased total *L. salmonis* prevalence in year two of production compared to the prevalence levels recorded in a 1st year or fallow period of production.

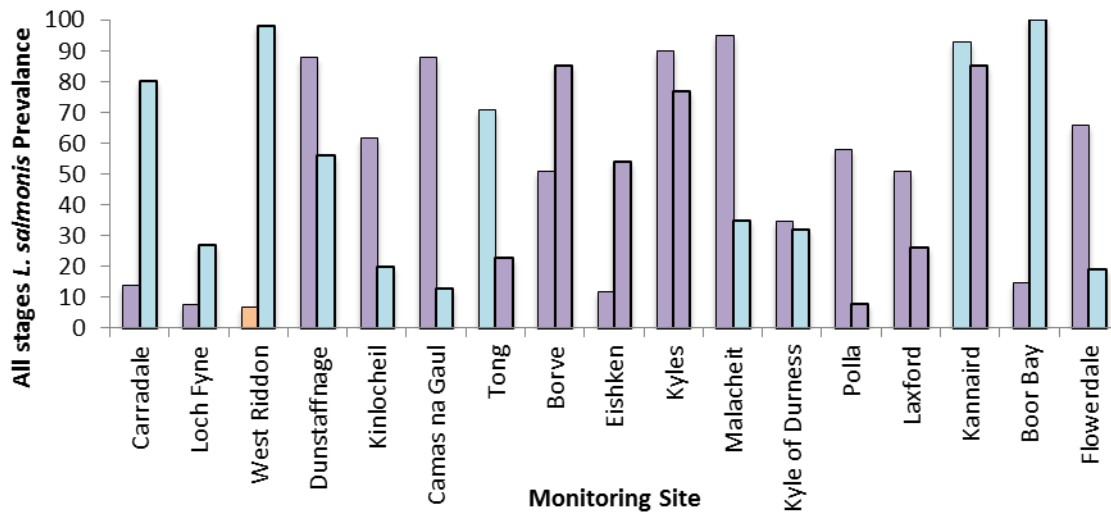


Figure 20: Year of production for 2011 and 2012 of the nearest active fish farms to each monitoring site. Orange = Fallow, Blue = 1st Year of Production and Purple = 2nd Year of Production.

Clearly the interrelationship between wild sea lice levels and year of production is a pattern that is supported by the evidence that is being gathered within this study, however it should be noted this is not the only driving factor in this interrelationship. As can be seen from Figure 21, 29% of the seventeen monitoring sites the prevalence levels of *L. salmonis* are greater in the first year of production compared to those recorded in the second year of production. Similarly in both 2011 and 2012 two monitoring sites are documented as breaking one or more detrimental thresholds whilst the nearest active fish farm was in year one of production (Table 2 and 3). There are significant natural and fish farming activity variations between the monitoring sites that will in all probability also have an impact on the infestations levels of *L. salmonis* at each monitoring site. Such differences between the monitoring sites includes the loch system flushing rates, loch system orientation, the distance to nearest farms, the number of farms in proximity in differing year of production and the size of the sea trout populations present within the study area. Additional environmental reasoning behind such observed variations has also been recorded in relation to the spatial concurrence of either the post smolts or sea lice under study here were the post smolts or the sea lice are varying spatially among years. For instance, the wind direction may well be affecting dispersal of sea lice (Amundrud and Murray 2009). Further contributing factors may also be attributed to sea lice management on the fish farm sites. As Robbins *et al* 2010 demonstrated good sea lice management can successfully lower the release rates of sea lice nauplii stages however there is no data available on the management of sea lice at a local farm site level in Scotland to be able to consider the impact of this factor at this time.

Table 2: Monitoring sites in 2011 which broke one or both of the detrimental sea lice loading thresholds and the year of production to the nearest active fish farm.

Monitoring Site 2011	Area	Over the Epizootic Threshold	Over the 10 \geq Detrimental Threshold	Year of Production of Nearest Farm
Camas Na Gaul	Lochaber	Yes	Yes	2
Kyles	Outer Hebrides	Yes	No	2
Malaclet	Outer Hebrides	Yes	No	2
Laxford	West Sutherland	Yes	No	2
Kannaird	Wester Ross	Yes	Yes	1

Table 3: Monitoring sites in 2012 which broke one or both of the detrimental sea lice loading thresholds and the year of production to the nearest active fish farm.

Monitoring Site 2012	Area	Over the Epizootic Threshold	Over the 10 \geq Detrimental Threshold	Year of Production of Nearest Farm
West Riddon	Argyll	Yes	No	1
Goil	Argyll	Yes	No	2
Borrodale	Lochaber	Yes	No	2
Borve	Outer Hebrides	Yes	No	2
Kannaird	Wester Ross	Yes	Yes	2

4.2.2 Monitoring Site Sea Lice Counts in comparison to Farmed Fish sea lice counts.

The Scottish Salmon Producers Organisation (SSPO) continues to develop and manage its dedicated health management system specifically designed to assist its members to improve lice management across Scotland which was first launched in late 2010. The information gathered and analysed in this system is published in publicly available reports on their website for six management regions across Scotland.

The six management regions are Orkney, West Shetland, East Shetland, North Mainland, South Mainland and the Western Isles. The monitoring sites within the Managing Interactions project fall into the North Mainland (encompassing the coastline (and associated islands) from Loch Eriboll in the north to Rubh' Arisaig, near Loch nan Ceall on the west coast), South Mainland (encompassing the coastline (and associated islands) from Rubh' Arisaig, near Loch nan Ceall on the west coast, to Irvine, towards south west Scotland.) and the Western Isles (encompasses all islands in the Western Isles including Harris, Lewis, North and South Uist, Benbecula, Barra and the associated smaller islands).

The interactions between farmed and wild fish in relation to sea lice is a contentious issue in Scotland and elsewhere which are not yet fully researched or understood (Harvey, 2009). Nonetheless the most realistic approach within the current understanding of the wild and farmed fish interactions should be a precautionary approach as highlighted by Revie *et al* (2009). As noted in the 2011 regional monitoring report the highly aggregated form, covering large geographical areas, in which the SSPO published their results does not allow for a comparative evaluation between wild

and farmed lice counts to be undertaken. Nevertheless it is possible to report on the regional lice count information published by SSPO.

The SSPO reports indicate that in the period of May 2012 the Western Isles had lice numbers across these the region, on average, remained below the suggested lice treatment threshold set out in the National Treatment Strategy for the Control of Sea Lice on Scottish Salmon Farms (NTS) and the Code of Good Practice (CoGP). However, the North Mainland and South Mainland, lice numbers across this region were, on average, 152% and 70% respectively above the suggested treatment threshold set out in the NTS and CoGP (Figure 21A). In June 2012 the SSPO reports indicate that again the Western Isles, lice numbers across this region, on average, remained below the suggested lice treatment threshold set out in the NTS and CoGP. Whilst in the North Mainland and South Mainland regions the lice numbers across this region, on average, which were 458% and 22% respectively above the suggested lice treatment threshold set out in the NTS and CoGP (Figure 21B). Finally in July 2012 the SSPO reports indicated that the Western Isles and the South Mainland, lice numbers across these two regions, on average, remained below the suggested lice treatment threshold set out in the NTS and CoGP. Whilst the North Mainland during July, lice numbers were, on average, 233% above the suggested lice treatment threshold set out in the NTS and CoGP (Figure 21C).

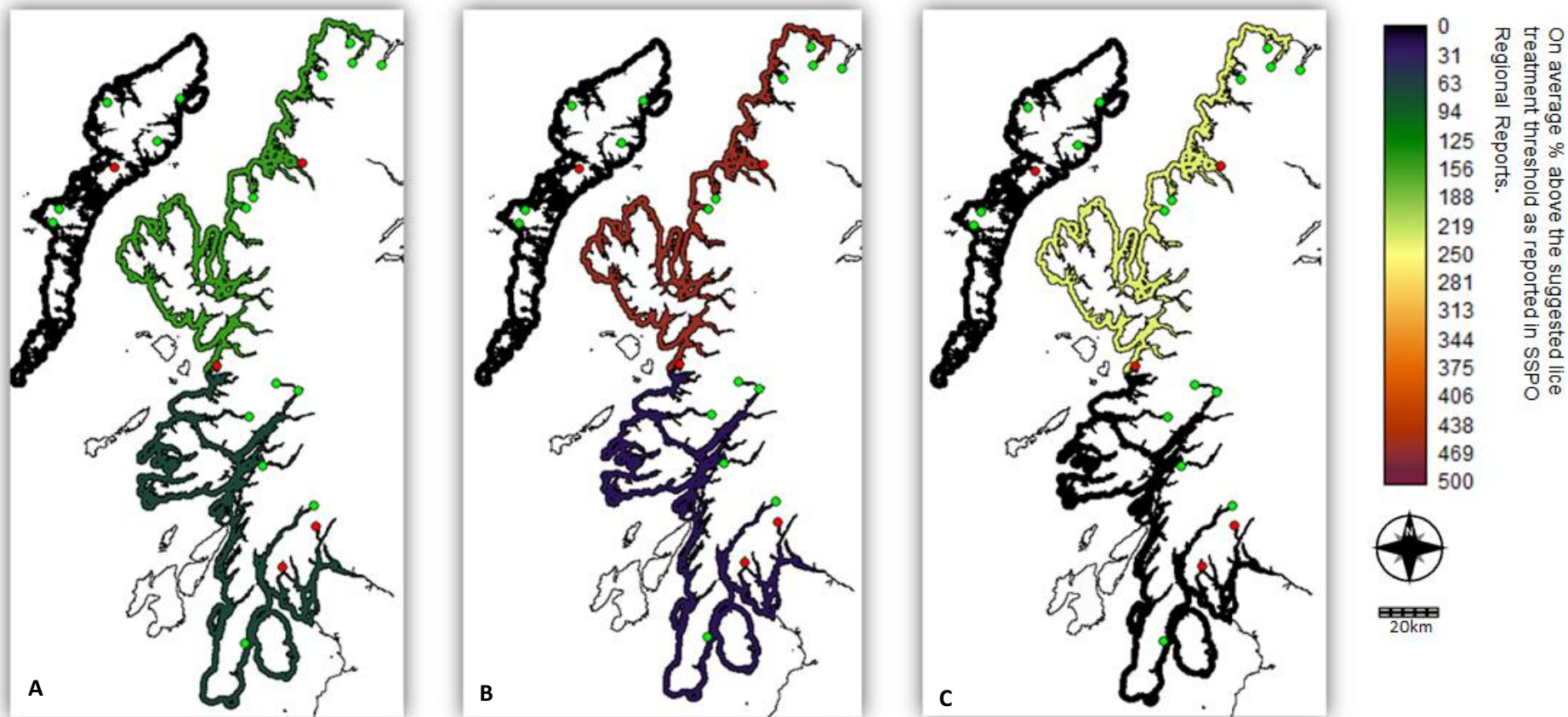


Figure 21: Map layers representing the reported farm sea lice levels in relation to the CoGP and NTS threshold levels in 2012. 0 indicates for that period on average the region is below the threshold level. The green dots indicate wild monitoring sites which did not exceed one of predetermined explored determinant threshold levels in 2012. In comparison the red dots indicate wild monitoring sites that did exceed one or more of the explored threshold levels in 2012.

5. Conclusions

In 2012 at 22 monitoring sites across the west coast and islands of Scotland over one thousand sea trout were evaluated and essential data recorded. The lessons learnt and refinements identified by the 2011 study were successfully incorporated into the 2012 project.

At each monitoring site in 2012, the Sea Trout populations under examination showed status and trends that were diverse across the west coast region. It was also recorded that there was a reduction in the mean weights and condition indices in 2012 when compared to the 2011 recorded results. Whilst the mean recorded lengths remained static between the years.

For 2012 the results indicated that 5 monitoring sites experienced extensive heavy infestations (epizootic). The management threshold level for infestation levels (Wells *et al*, 2006) was used to determine if the infection levels resulted in detrimental impact effects. This implemented critical threshold level indicates that potentially two of the monitoring sites had elevated levels of sea lice presence within the fish population that potentially could be having a critical detrimental impact.

Data comparisons between wild fish sea lice counts and farm site sea lice counts remains problematic. Being able to properly draw conclusions on links across what is occurring between farmed fish, wild fish and sea lice within a local area is of paramount importance in ensuring that the appropriate management strategies and policies are employed for the health and wellbeing of the wild fish and for the sustainable development of farmed fish within a defined area.

The monitoring work undertaken in this project highlights the interaction issues that are of relevance for all stakeholders involved with the management and conservation of Sea Trout populations on the West Coast of Scotland. The data and information gathered within this project has also informed and contributed to the wider scientific debate. The strengths of this project are clear from the early results and will continue to be further expanded in the third year. It is an important contributor in helping to support the development and understanding of the interactions between wild fish populations and sea lice on the West Coast Scotland.

6. References

- Atlantic Salmon Trust, Report on the Sea Trout Workshop, 9th & 10th February 2011, Plas Menai, Bangor.
- Beamish R., Wade J., Pennell W., Gordon E., Jones S., Neville C., Lange K., Sweeting R.. 2009 A large, natural infection of sea lice on juvenile Pacific salmon in the Gulf Islands area of British Columbia, Canada. *Aquaculture* 297;31–37.
- Bergh, Ø., Nilsen, F. and Samuelson, O. B. 2001 Diseases, prophylaxis and treatment of the Atlantic halibut *Hippoglossus hippoglossus*: a review. *Dis. Aquat. Org.*, 48, 57–74.
- Bjørn, P. A., and Finstad, B. 1997. The physiological effects of salmon lice infection on sea trout post smolts. *Nordic Journal of Freshwater Research*, 73: 60–72.
- Butler J. R. 2002 Wild salmonids and sea louse infestations on the west coast of Scotland: sources of infection and implications for the management of marine salmon farms. *Pest Manag. Sci.* 58, 595–608.
- Butler, J.R A., Middlemas S.J., Graham, I.M. Thompson P.M. and Armstrong J.D. 2006. Modelling the impacts of removing seal predation from Atlantic salmon, *Salmo salar*, rivers in Scotland: a tool for targeting conflict resolution. *Fisheries Management and Ecology*, 13 pp 285 – 291.
- Butler J. R. Middlemas S.J. Graham I. M., Harris R.N. 2011. Perceptions and costs of seal impacts on Atlantic salmon fisheries in the Moray Firth, Scotland: Implications for the adaptive co-management of seal-fishery conflict. *Marine Policy* 35 317 – 323.
- Butterworth, K.G., Cubitt, K.F., Finstad, B., Huntingford, F., McKinley, R.S., 2006. *Sea Lice: The Science Behind the Hype*. Fraser Institute Digital Publication, Vancouver, Canada, pp. 1–23.
- Brooks, K. 2005. The Effects of Water Temperature, Salinity, and Currents on the Survival and Distribution of the Infective Copepodid Stage of Sea Lice (*Lepeophtheirus Salmonis*) Originating on Atlantic Salmon Farms in the Broughton Archipelago of British Columbia, Canada. *Reviews in Fisheries Science*. No 13 pp177–204.
- Costello, M. J. 2006 Ecology of sea lice parasitic on farmed and wild fish. *Trends in Parasitology* Vol.22 No.10 pp475 -483.
- Costello, M. J. 2009 How sea lice from salmon farms may cause wild salmonid declines in Europe and North America and be a threat to fishes elsewhere. *Proc R Soc B Biol Sci* 276:3385–3394.
- Finstad, B., Bjørn, P.A., Grimnes, A., Hvidsten, N.A., 2000. Laboratory and field investigations of salmon lice [*Lepeophtheirus salmonis* (Krøyer)] infestation on Atlantic salmon (*Salmo salar* L.) post smolts. *Aquaculture. Research*. 31, 795–803.
- Gargan, P., Tully, O. & Poole, W.R. 2003 Relationship between sea lice infestation, sea lice production and sea trout survival in Ireland, 1992-2001. In: Mills D (ed.). *Salmon at the Edge*. Oxford: Blackwell Science, pp. 119-135.

Hazon N, Todd CD, Whelan B, Gargan P, Finstad B, Bjørn PA, Wendelaar Bonga SE & Kristoffersen R. 2006. Sustainable management of interactions between aquaculture and wild salmonid fish. Final report for the SUMBAWS EU project.

Harvey, B. 2009. Sea Lice and Salmon Farms: A Second Look. An Update of "Science and Sea Lice: What Do We Know?". An Independent Review Prepared for the B.C. Pacific Salmon Forum.

Heuch, P.A., Revie, C.W. and Gettinby, G. 2003. A comparison of epidemiological patterns of salmon lice, *Lepeophtheirus salmonis*, infections on farmed Atlantic salmon, *Salmo salar* L., in Norway and Scotland. *Journal of Fish Diseases* 2003, 26, 539–551

Jones, S., and A. Nemeč. Pink Salmon Action Plan: Sea lice on juvenile salmon and on some non salmonid species caught in the Broughton Archipelago in 2003. Canadian Science Advisory Secretariat. Research Document 2004.

Kabata, Z. 1979. Parasitic Copepoda of British Fishes. Ray Society, London.

Lees, F., Gettinby, G. & Revie, C. W. 2008 Changes in epidemiological patterns of sea lice infestation on farmed Atlantic salmon (*Salmo salar* L.) in Scotland between 1996 and 2006. *J. Fish Dis.* 31, 251–262.

Middlemas S.J., Armstrong J.D. & Thompson P.M. 2003 The significance of marine mammal predation on salmon and sea trout. In: D.H. Mills (ed.) *Salmon at the Edge*. Oxford: Blackwell Science, pp. 42–60.

Middlemas, S. J., Raffell, J.A., Hay, D.W., Hatton-Ellis, M. and Armstrong, J.D. 2010. Temporal and spatial patterns of sea lice levels on sea trout in western Scotland in relation to fish farm production cycles. *Biology Letters* 6, 548–551

Middlemas, S. J., Fryer, R. J., Tulett, D. and Armstrong, J. D. 2012. Relationship between sea lice levels on sea trout and fish farm activity in western Scotland. *Fisheries Management and Ecology*. doi: 10.1111/fme.12010.

Penston M. J., McBeath A. J. A., and Millar C. P. 2011. Densities of planktonic *Lepeophtheirus salmonis* before and after an Atlantic salmon farm relocation. *Aquacult Environ Interact*. Vol. 1 pp 225 to 232.

Piasecki, W. 1996 The developmental stages of *Caligus elongatus* von Nordmann, 1832. *Can. J. Zool.*, 74, 1459–1478.

Revie, C. W., Gettinby, G., Treasurer, J. W. & Rae, G. H. 2002 The epidemiology of the sea lice, *Caligus elongates* Nordmann, in marine aquaculture of Atlantic salmon, *Salmo salar* L., in Scotland. *J. Fish Dis.* 25, 391–399.

Revie, C., Dill, L., Finstad, B., and Todd. C.D. 2009. Salmon Aquaculture Dialogue Working Group Report on Sea Lice. Commissioned by the Salmon Aquaculture Dialogue available at <http://www.worldwildlife.org/what/globalmarkets/aquaculture/WWFBinaryitem11790.pdf>. [Accessed on 10th December 2011]

Ricker, W. E. 1975. Computation and interpretation of biological statistics of fish populations. Bulletin of the Fisheries Research Board of Canada 191:1-382.

Wells, A., Grierson, C.E., MacKenzie, M., Russon, I.J., Reinardy, H., Middlemiss, C., Bjorn, P.A., Finstad, B., Wendelaar Bonga, S.E., Todd, C.D. and Hazon, N. 2006 Physiological effects of simultaneous, abrupt seawater entry and sea lice (*Lepeophtheirus salmonis*) infestation of wild, sea-run brown trout (*Salmo trutta*) smolts. Canadian Journal of Fisheries and Aquatic Sciences 63:2809-2821.

Wootton, R., Smith, J. W. and Needham, E. A. 1982 Aspects of the biology of the parasitic copepods *Lepeophtheirus salmonis* and *Caligus elongatus* on farmed salmonids, and their treatment. Proc. R. Soc. Edin. B, 81, 185–197.

Schram, T.A. 1993. Supplementary descriptions of the developmental stages of *Lepeophtheirus salmonis* (Krøyer, 1837) (Copepoda: Caligidae). In: Boxshall GA, Defaye DD (eds) Pathogens of wild and farmed fish: sea lice. Ellis Horwood, New York, p 30–50.

Tully, O., 1989. The succession of generations and growth of the caligid copepods, *Caligus elongatus* and *Lepeophtheirus salmonis* parasitising farmed Atlantic salmon smolts *Salmo salar* L.. J. Mar. Biol. Assoc. UK 69, 279–287.

7. Appendix

Appendix 1

Table A1: Monitoring Site Mean Environmental Conditions over sample period in 2012.

Monitoring Site	Mean Water Temperature	Mean Air Temperature	Mean Salinity
Carradale	14.6	18.05	1.9
Loch Fyne	9.15	10.25	1.3
West Riddon	10.95	10.8	2.45
Dunstaffnage	11.15	13.35	1.85
Goil	15.1	14.75	1.35
Kinlocheil	10.25	15.25	12.6
Camas na Gaul	10.25	13.25	18.2
Sunart	10.75	14.5	29.35
Borrodale	12.5	18.25	27.65
Tong	15.03	12.03	35
Ardroil	20.5	20.25	35
Borve	13.8	15.37	35
Eishken	13.9	16.35	35
Kyles	23.8	15.26	35
Malacheit	13.35	14.15	35
Kyle of Durness	15	11.3	19
Polla	14.5	*	4
Laxford	15.9	20	4
Kinloch	13	13.2	0.9
Kannaird	15.25	15	6
Boor Bay	17	*	28.5
Flowerdale	14	16.5	10

* = No data

Appendix 2

Table A2: Sea Trout Post Smolt (Threshold 260mm) Analysis for 2012

Monitoring Site	Mean length (\pm s.d.) (mm)	Mean Weight (\pm s.d.) (g)	Mean Condition Factor (\pm s.d.)
Carradale	168.2 (\pm 15.54)	65.46(\pm 20.89)	1.35(\pm 0.26)
Loch Fyne	157.57 (\pm 39.09)	50.85(\pm 45.64)	1.07(\pm 0.15)
West Riddon	170.24 (\pm 31.66)	73.48(\pm 44.53)	1.45(\pm 1.28)
Dunstaffnage	188.66 (\pm 23.93)	80.61(\pm 31.77)	1.16(\pm 0.21)
Goil	153.72 (\pm 14.12)	42.84(\pm 13.09)	1.15(\pm 0.13)
Kinlocheil	153.12 (\pm 32.24)	42.19(\pm 39.05)	0.89(\pm 0.32)
Camas na Gaul	152.49 (\pm 19.91)	39.22(\pm 23.47)	0.98(\pm 0.24)
Sunart	*	*	*
Borrodale	178.8 (\pm 35.26)	70.4(\pm 41.51)	1.04(\pm 0.26)
Tong	196.59 (\pm 29.45)	77.61(\pm 32.77)	0.98(\pm 0.14)
Ardroil	*	*	*
Borve	194 (\pm 29.24)	86.72(\pm 35.74)	1.16(\pm 0.21)
Eishken	181.49 (\pm 28.74)	67.62(\pm 38.30)	1.06(\pm 0.25)
Kyles	225.36 (\pm 35.15)	121.09(\pm 49.51)	0.98(\pm 0.15)
Malacheit	166.9 (\pm 30.16)	51.23(\pm 32.67)	1.01(\pm 0.09)
Kyle of Durness	170.06 (\pm 18.39)	54.32(\pm 17.96)	1.07(\pm 0.11)
Polla	149.94 (\pm 34.55)	42.4(\pm 31.55)	1.14(\pm 0.37)
Laxford	187.32 (\pm 33.72)	71.72(\pm 38.20)	1.01(\pm 0.17)
Kinloch	173.81 (\pm 25.01)	42.28(\pm 20.07)	0.76(\pm 0.13)
Kannaird	193 (\pm 28.58)	81.01(\pm 41.70)	1.07(\pm 0.52)
Boor Bay	198.44 (\pm 26.30)	99.55(\pm 53.39)	1.19(\pm 0.14)
Flowerdale	164.98 (\pm 21.31)	41.53(\pm 21.27)	0.86(\pm 0.11)

* = No Data

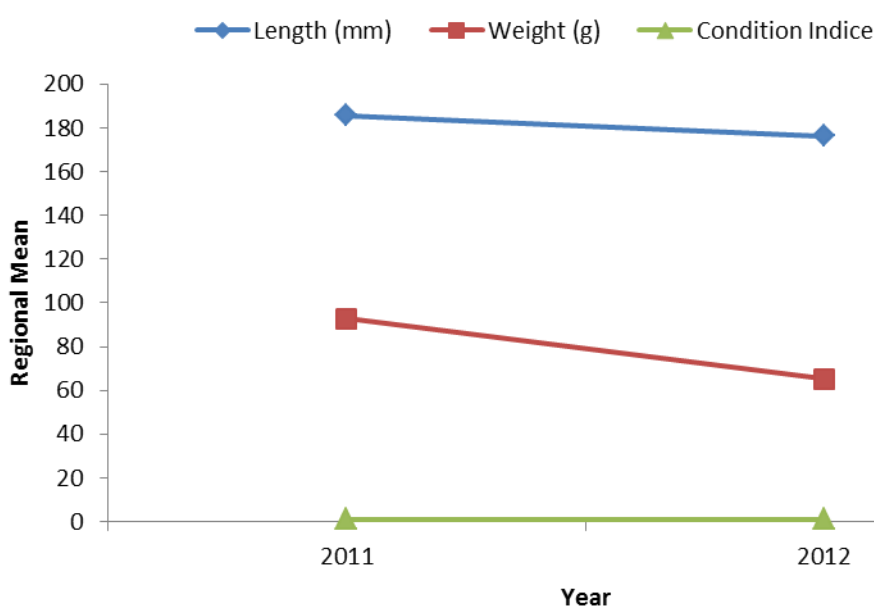


Figure A1: Regional mean results for length, weight and condition Indices for post smolt sea trout in 2011 and 2012.

Appendix 3

Table A3: Prevalence, Abundance, Intensity and Median analysis for Copepodid/Chalimi at each monitoring site 2012.

Monitoring Site	Prevalence	Abundance (\pm s.d.)	Intensity (\pm s.d.)	Median
Carradale	43	0.36 (\pm 0.45)	1.07 (\pm 0.12)	0
Loch Fyne	14	0.2 (\pm 0.62)	2.71 (\pm 0.62)	0
West Riddon	96	8.08 (\pm 1.62)	8.82 (\pm 1.30)	10
Dunstaffnage	34	0.57 (\pm 1.15)	2.73 (\pm 1.13)	0
Goil	90	5.44 (\pm 1.11)	6.96 (\pm 0.51)	7
Kinlocheil	10	0.1 (\pm 0.37)	1.67 (\pm 0.44)	0
Camas na Gaul	12	0.09 (\pm 0.27)	1.06 (\pm 0.11)	0
Sunart	*	*	*	*
Borrodale	40	1.34 (\pm 2.25)	7.42 (\pm 1.09)	0
Tong	6	0.06 (\pm 0.27)	1.52 (\pm 0.49)	0
Ardroil	*	*	*	*
Borve	65	4.93 (\pm 3.70)	14.23 (\pm 1.81)	5
Eishken	24	1.02 (\pm 2.76)	17.05 (\pm 1.39)	0
Kyles	9	0.06 (\pm 0.23)	1 (\pm 0)	0
Malachait	3	0.02 (\pm 0.13)	1 (\pm 0)	0
Kyle of Durness	15	0.16 (\pm 0.45)	1.7 (\pm 0.35)	0
Polla	0	0 (\pm 0)	0 (\pm 0)	0
Laxford	11	0.2 (\pm 0.84)	4.24 (\pm 1.86)	0
Kinloch	44	0.91 (\pm 1.22)	3.35 (\pm 0.57)	0
Kannaird	74	8.35 (\pm 5.73)	19.25 (\pm 3.94)	4
Boor Bay	78	3.53 (\pm 2.91)	5.97 (\pm 2.41)	3
Flowerdale	10	0.11 (\pm 0.45)	1.83 (\pm 0.30)	0

* = No data

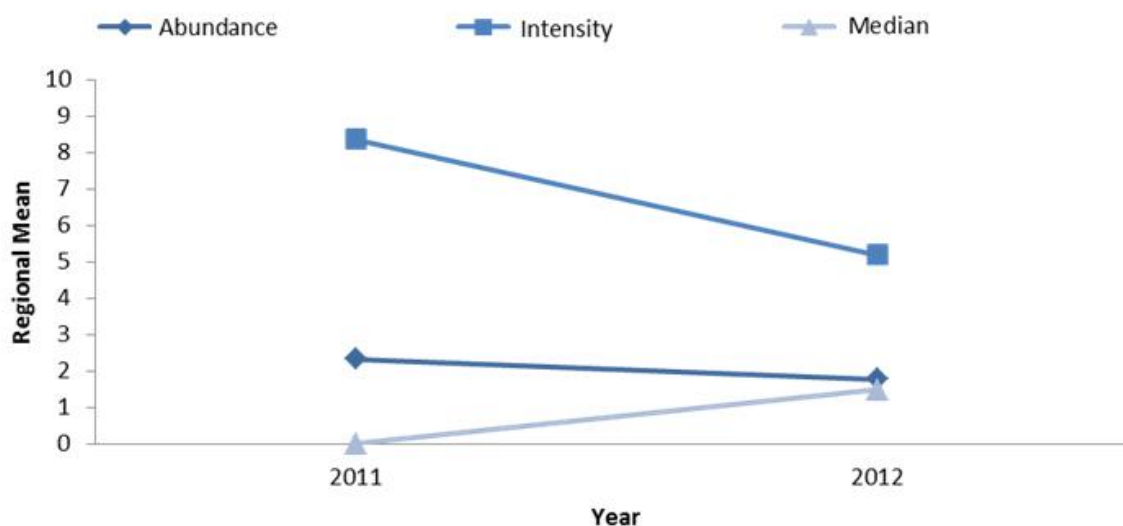


Figure A2: Regional mean results for Copepodid/Chalimi Abundance, Intensity and Median in 2011 and 2012.

Appendix 4

Table A4: Prevalence, Abundance, Intensity and Median analysis for Preadult/Adult at each monitoring site 2012.

Monitoring Site	Prevalence	Abundance (\pm s.d.)	Intensity (\pm s.d.)	Median
Carradale	64	0.87 (\pm 0.73)	1.65 (\pm 0.42)	1
Loch Fyne	11	0.11 (\pm 0.37)	1.61 (\pm 0.39)	0
West Riddon	91	3.37 (\pm 1.25)	4.02 (\pm 1.02)	3
Dunstaffnage	42	0.72 (\pm 1.19)	2.64 (\pm 1.01)	0
Goil	92	2.32 (\pm 0.68)	2.67 (\pm 4.46)	2
Kinlocheil	18	0.25 (\pm 0.73)	2.42 (\pm 0.92)	0
Camas na Gaul	3	0.03 (\pm 0.16)	1.21 (\pm 0.22)	0
Sunart	*	*	*	*
Borrodale	70	2.52 (\pm 1.71)	5.04 (\pm 0.82)	3
Tong	18	0.21 (\pm 0.58)	1.83 (\pm 0.65)	0
Ardroil	*	*	*	*
Borve	77	1.66 (\pm 1.14)	2.56 (\pm 0.84)	2
Eishken	49	0.87 (\pm 1.27)	2.64 (\pm 1.05)	0
Kyles	73	1.41 (\pm 1.32)	2.35 (\pm 1.10)	1
Malachait	30	0.42 (\pm 0.85)	2.2 (\pm 0.73)	0
Kyle of Durness	21	0.19 (\pm 0.45)	1.34 (\pm 0.32)	0
Polla	1	0.01 (\pm 0.07)	1 (\pm 0)	0
Laxford	15	0.19 (\pm 0.55)	2.07 (\pm 0.59)	0
Kinloch	81	3.15 (\pm 1.74)	5.06 (\pm 1.16)	5
Kannaird	35	0.51 (\pm 1.03)	2.23 (\pm 1.08)	0
Boor Bay	67	1.44 (\pm 1.39)	2.82 (\pm 1.02)	1
Flowerdale	8	0.09 (\pm 0.41)	2.3 (\pm 0.74)	0

* = No data

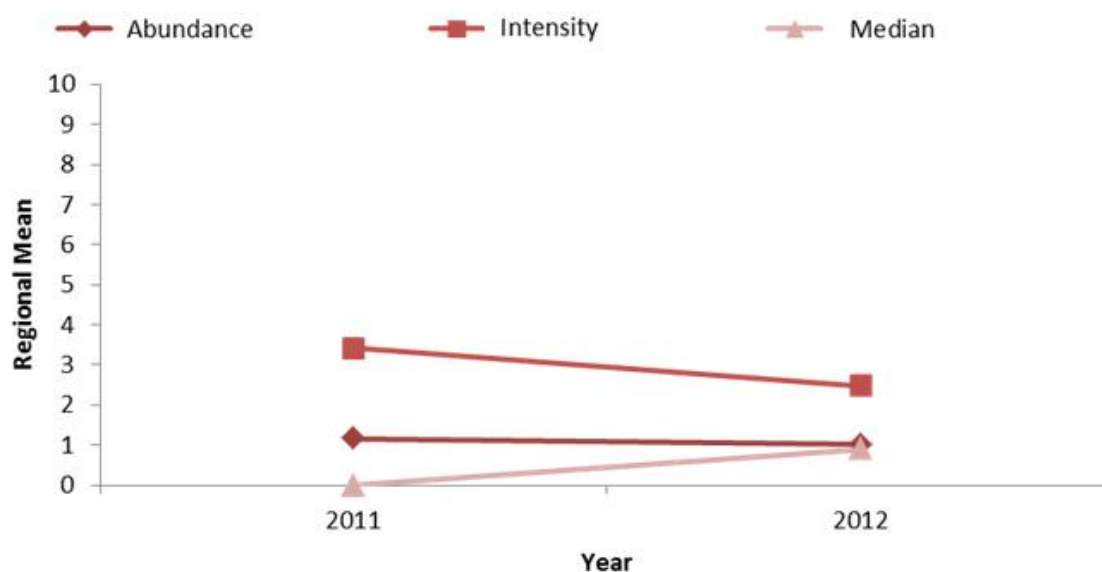


Figure A3: Regional mean results for Preadult/Adult Abundance, Intensity and Median in 2011 and 2012.

Appendix 5

Table A5: Prevalence, Abundance, Intensity and Median analysis for Ovigerous Females at each monitoring site 2012.

Monitoring Site	Prevalence	Abundance (\pm s.d.)	Intensity (\pm s.d.)	Median
Carradale	25	0.28(\pm 0.70)	1.7(\pm 0.89)	0
Loch Fyne	1	0.01(\pm 0.08)	1(\pm 0)	0
West Riddon	2	0.01(\pm 0.09)	1(\pm 0)	0
Dunstaffnage	0	0(\pm 0)	0(\pm 0)	0
Goil	23	0.18(\pm 0.38)	1.1(\pm 0.15)	0
Kinlocheil	7	0.05(\pm 0.19)	1(\pm 0)	0
Camas na Gaul	0	0	0(\pm 0)	0
Sunart	*	*	*	*
Borrodale	20	0.23(\pm 0.60)	1.83(\pm 0.63)	0
Tong	10	0.09(\pm 0.31)	1.3(\pm 0.36)	0
Ardroil	*	*	*	*
Borve	18	0.21(\pm 0.58)	1.91(\pm 0.63)	0
Eishken	8	0.06(\pm 0.21)	1(\pm 0)	0
Kyles	27	0.4(\pm 0.91)	2.48(\pm 0.89)	0
Malachait	3	0.06(\pm 0.39)	5(\pm 0)	0
Kyle of Durness	0	0(\pm 0)	0(\pm 0)	0
Polla	0	0(\pm 0)	0(\pm 0)	0
Laxford	4	0.04(\pm 0.21)	1.44(\pm 0.33)	0
Kinloch	0	0(\pm 0)	0(\pm 0)	0
Kannaird	1	0.01(\pm 0.08)	1(\pm 0)	0
Boor Bay	22	0.17(\pm 0.36)	1(\pm 0)	0
Flowerdale	5	0.03(\pm 0.16)	1(\pm 0)	0

* = No Data

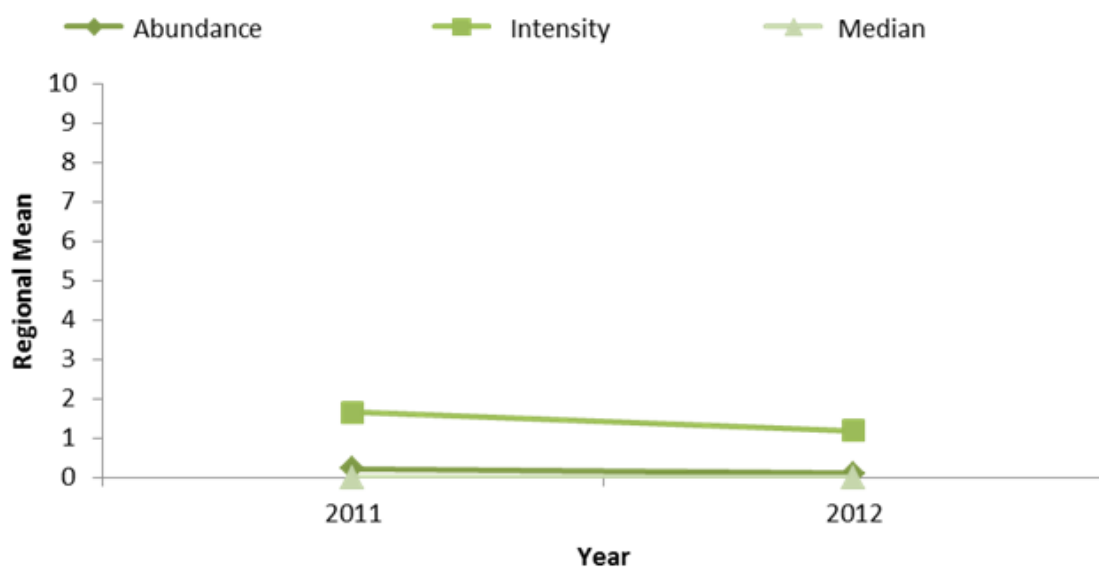


Figure A4: Regional mean results for Ovigerous Females Abundance, Intensity and Median in 2011 and 2012.

Appendix 6

Table A6: Prevalence, Abundance, Intensity and Median analysis for Total *L. salmonis* at each monitoring site 2012.

Monitoring Site	Prevalence	Abundance (\pm s.d.)	Intensity (\pm s.d.)	Median
Carradale	79	1.51(\pm 0.90)	2.23(\pm 0.60)	2
Loch Fyne	16	0.23(\pm 0.66)	2.49(\pm 0.65)	0
West Riddon	98	9.43(\pm 1.29)	9.86(\pm 1.16)	10
Dunstaffnage	55	1.07(\pm 1.41)	2.73(\pm 1.20)	1
Goil	95	6.16(\pm 0.91)	6.96(\pm 6.96)	8
Kinlocheil	20	0.31(\pm 0.86)	2.88(\pm 0.96)	0
Camas na Gaul	13	0.09(\pm 0.27)	0.91(\pm 0.29)	0
Sunart	*	*	*	*
Borrodale	70	3.44(\pm 2.35)	7.42(\pm 1.18)	4
Tong	24	0.32(\pm 0.73)	2.08(\pm 0.67)	1
Ardroil	*	*	*	*
Borve	85	5.96(\pm 2.54)	8.9(\pm 1.82)	1
Eishken	54	1.7(\pm 2.45)	5.27(\pm 2.09)	0
Kyles	73	1.7(\pm 1.61)	2.93(\pm 1.35)	0
Malachait	33	0.47(\pm 0.95)	2.21(\pm 0.94)	0
Kyle of Durness	32	0.31(\pm 0.54)	1.31(\pm 0.36)	0
Polla	1	0.01(\pm 0.07)	1(\pm 0)	0
Laxford	17	0.31(\pm 0.95)	3.75(\pm 1.11)	0
Kinloch	86	3.89(\pm 1.73)	5.33(\pm 1.29)	6
Kannaird	81	7.15(\pm 4.26)	11.74(\pm 3.40)	3
Boor Bay	100	4.49(\pm 1.80)	4.49(\pm 1.80)	3
Flowerdale	12	0.19(\pm 0.60)	2.15(\pm 0.87)	0

* = No Data

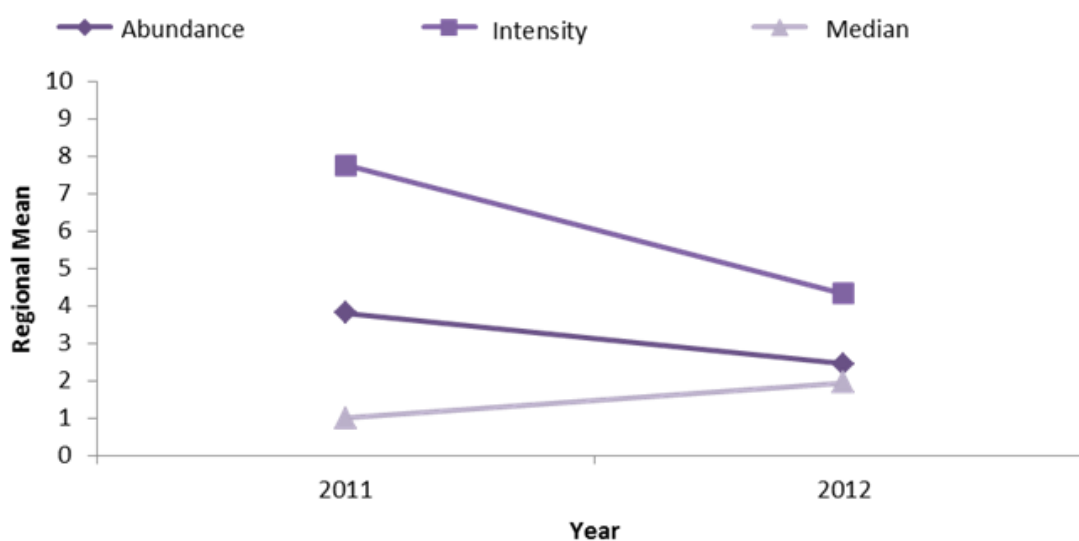


Figure A5: Regional mean results for Total *L. salmonis* Abundance, Intensity and Median in 2011 and 2012.

Appendix 7

Table A7: Prevalence, Abundance, Intensity and Median analysis for *C. elongatus* at each monitoring site 2012.

Monitoring Site	Prevalence	Abundance (\pm s.d.)	Intensity (\pm s.d.)	Median
Carradale	29	0.34 (\pm 0.67)	1.77 (\pm 0.50)	0
Loch Fyne	1	0.01 (\pm 0.08)	1 (\pm 0)	0
West Riddon	5	0.04 (\pm 0.21)	1.29 (\pm 0.26)	0
Dunstaffnage	0	0 (\pm 0)	0 (\pm 0)	0
Goil	8	0.05 (\pm 0.20)	1 (\pm 0)	0
Kinlocheil	7	0.05 (\pm 0.19)	1 (\pm 0)	0
Camas na Gaul	0	0 (\pm 0)	0 (\pm 0)	0
Sunart	*	*	*	*
Borrodale	0	0 (\pm 0)	0 (\pm 0)	0
Tong	10	0.09 (\pm 0.31)	1.3 (\pm 0.36)	0
Ardroil	*	*	*	*
Borve	3	0.02 (\pm 0.12)	1 (\pm 0)	0
Eishken	3	0.02 (\pm 0.12)	1 (\pm 0)	0
Kyles	0	0 (\pm 0)	0 (\pm 0)	0
Malachait	0	0 (\pm 0)	0 (\pm 0)	0
Kyle of Durness	15	0.57 (\pm 0.33)	1.17 (\pm 0.20)	0
Polla	0	0 (\pm 0)	0 (\pm 0)	0
Laxford	4	0.08 (\pm 0.49)	5 (\pm 1.66)	0
Kinloch	33	0.57 (\pm 1.01)	2.97 (\pm 0.56)	0
Kannaird	0	0 (\pm 0)	0 (\pm 0)	0
Boor Bay	55	0.76 (\pm 0.86)	1.76 (\pm 0.56)	1
Flowerdale	0	0 (\pm 0)	0 (\pm 0)	0

* = No data

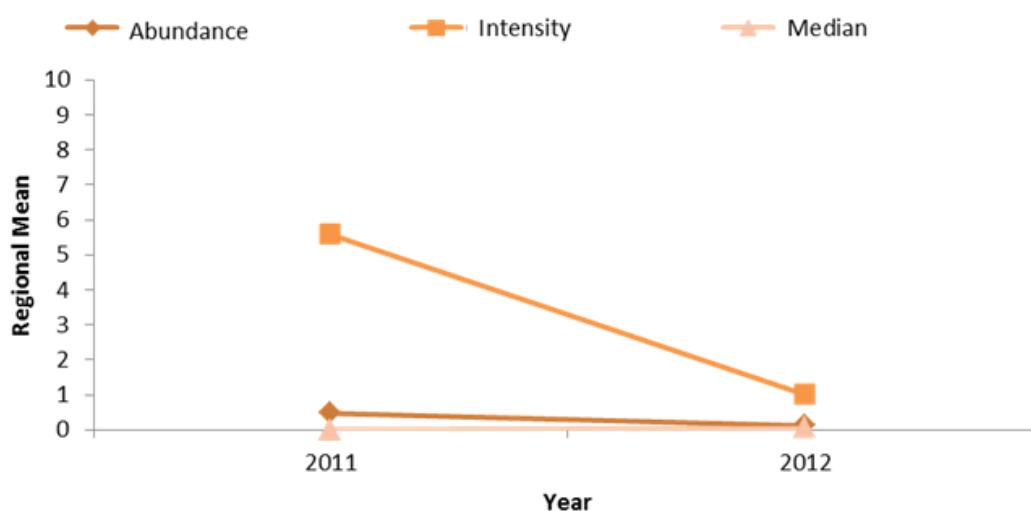


Figure A6: Regional mean results for *C. elongatus* Abundance, Intensity and Median in 2011 and 2012.

Appendix 8

Table A8: Percentage of individual sea trout (198mm) within each sample at the individual monitoring sites over the threshold levels.

Monitoring Site	% of Sea trout over the Wells et al Threshold 2011	% of Sea trout over the Wells et al Threshold 2012
Carradale	0	0
Loch Fyne	0	0
West Riddon	0	9
Dunstaffnage	3	0
Goil	*	0
Kinlocheil	3	0
Camas na Gaul	43	0
Sunart	0	*
Borrodale	*	0
Tong	2	0
Ardroil	0	0
Borve	3	0
Eishken	0	0
Kyles	0	0
Malacheit	29	0
Kyle of Durness	0	0
Polla	9	0
Laxford	18	0
Kinloch	*	0
Kannaird	33	48
Boor Bay	0	0
Flowerdale	8	0

* = No data