

SFCC

The **Scottish Fisheries** Co-ordination Centre

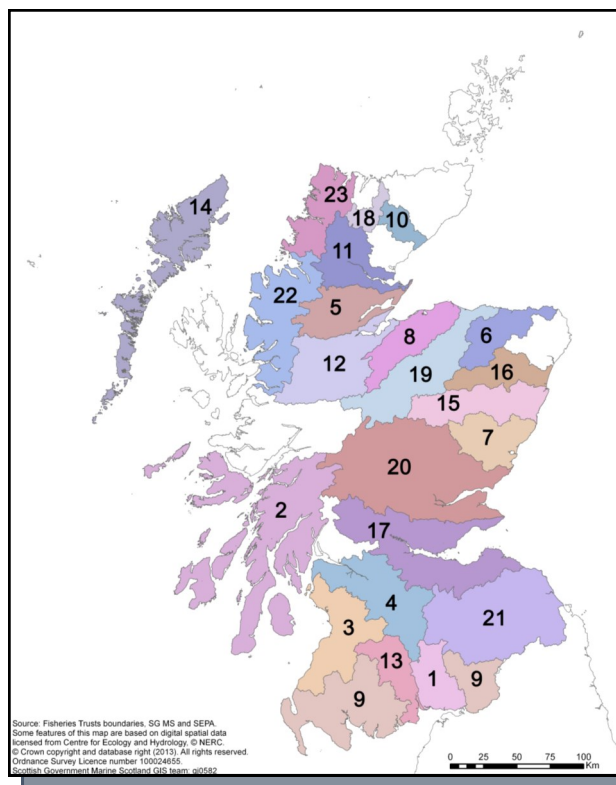
2015 ANNUAL REPORT

Chairman's welcome

On behalf of committee, I am pleased to report a steady year of progress for the SFCC. In addition to our contributions to the WFR process through the various consultations and working groups, training, protocols and data provision continue to be the pillars of SFCC. Online digital mapping (page 2) is a current area of innovation for the fisheries sector, whether it is the ability to share data more easily, create interactive web maps or record data to nationally agreed standards in the field. All bread and butter for the SFCC and this will be of great benefit to our members and partners.

Membership of The SFCC remains stable and has actually increased to 24 Trusts and SEPA with the addition of the River Don Trust who joined us mid-way through the year. So many thanks for your continuing support and welcome to the River Don Trust.

I would like to welcome Kerrie Campbell (Scottish Government) and Jo Girvan (River Forth Fisheries Trust) to the SFCC committee at the start of 2016 and we look forward to their input. As ever, we would like to encourage engagement from our wider membership, particularly in relation to SFCC involvement in the WFR process and by attendance at our quarterly committee meetings (remote connection welcome!). We also plan to launch a quarterly afternoon session after each SFCC committee meeting to promote discussion and raise awareness of current and planned work being carried out by fisheries organisations in Scotland.



**Map showing current Scottish Fisheries
Co-ordination Centre membership coverage**

2016 Biologists' Meeting

Our annual gathering was held at Birnam Hotel with the first day featuring talks from RAFTS, The Rivers and Lochs Institute and a topical session on flooding. Wild Fisheries Reform and the AGM were the focus of the afternoon before dinner and a team quiz. The winners of which; Helen, Lucy, Diane and Jackie, took prize custody of a rather large beaver chewed log until next year.

The ethos of day two was engagement between staff of The Fisheries Trust network, SEPA and the MSS Freshwater Fisheries Laboratory, with 56 attendees enjoying a total of 29 talks, many of them under the title of 'Getting Acquainted'. Topics ranged from 3-minute reality-checks on local fisheries management, to detailed accounts of modelling spatio-temporal variation in capture probability in juvenile salmonids. For those who missed out, talks are available [here](#).

Local and national biologists will gather again next year, on the provisional dates of February 8th and 9th, 2017.

MAPPING

SFCC Members Develop Mapping Capability

Data sharing and mapping technologies offer efficiency savings and integration opportunities between local and national fisheries sectors. Mapping can be used to better understand the distribution of species and habitats, or to communicate fisheries management on small or large scales. Data can be overlaid, revealing fisheries management opportunities and weaknesses, and how these relate to the needs of other sectors. In 2015 SFCC devoted a considerable amount to developing this capability, which will be of benefit to members from now onwards.

Fisheries Trusts benefit from low-cost mapping software provided under the ESRI non-profit programme. In 2015, 19 SFCC members updated their current mapping subscriptions and gained access to enhanced web-based mapping capabilities. The three new online mapping areas of benefit to members are :-

1. Access to Mapping Data

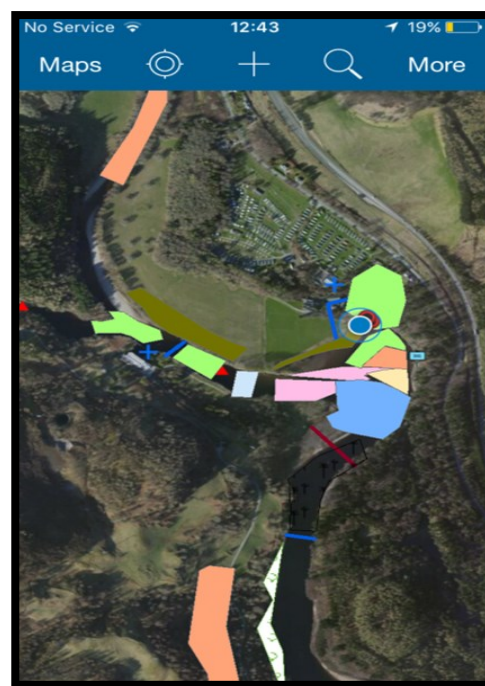
SFCC continues to facilitate access by Fisheries Trusts to mapping data, which is assisted by increased data availability for non-profit organisations and open public use. In Scotland, public bodies benefit from free access to high resolution Ordnance Survey data through the One Scotland Mapping Agreement (OSMA). In October 2015, SFCC negotiated agreement, in principal, that SFCC members (through their close working relationship with Marine Scotland), could gain access to this data through an annual end user license. Delivery of this service in 2016 is essential to ensuring that local fisheries managers have access to the same mapping data that currently underpins national fisheries management.



Overlay of Outer Hebrides Fisheries Trust trout fry data upon WFD river classifications.

2. Web Mapping

SFCC members now have access to web-based tools that permit ease of access to data without the need for updates and local hard copies. This web-based concept is of particular value in enabling joint working across the SFCC member network. In August 2015 SFCC launched the [Freshwater Fisheries Web Map](#), to provide a platform for its members and public bodies to view data. As of March 2016, the web map has been visited 2,869 times and is being regularly updated with datasets such as the National Library of Scotland historical maps, SEPA barriers dataset and Scotland's Salmon Distribution Map. Web mapping also enables development of simple tools such as a function to allow SFCC members to update Scotland's salmon distribution, a project that is being developed with MSS.



Testing the Esri Collector Application for the collection of habitat field data at Faskally

3. Field Data Collection

A further service being developed is field data collection using tablet devices. Map based data can be collected within pre-defined national standards, stored securely, and accessed locally or nationally. SFCC have developed simple field recording sheets for habitat and Sawbill duck surveys. In Spring 2016 this capability will be shared with SFCC members during a trial period.

INFORMATION, LITERATURE & DATA STORAGE

Wild Fisheries Information Feed

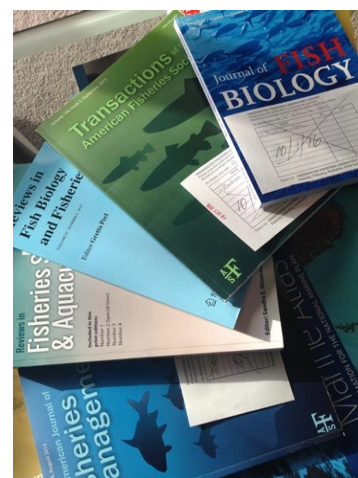
'Dashboard' technology enables information, news or updates from multiple sources to be brought together and made accessible in one place. The 'Wild Fisheries Information Feed' contains feeds from many fisheries organisations in Scotland. To access please visit www.sfcc.co.uk and click [Resources](#) in the top menu header.

We encourage SFCC members to provide feedback on this resource and to alert SFCC of any relevant sources of information to be added. It is important to note that only a title or summary of each article is provided, encouraging viewers to visit the host site. We are also considering setting up a service of weekly or monthly email alerts containing the latest updates to be sent to SFCC members. Please contact Sean if you wish to subscribe to these email alerts.

Literature Access for SFCC Members

Better integration of science with practical management is part of the vision for a reformed fisheries management system. For FMO's, improved access to scientific literature is one of many ways to promote this integration. Currently, SFCC members do not have routine access to science publications and SFCC is now looking to develop access and awareness. To begin this process, the following four items have recently been made available :-

1. [Procedure for access to the Freshwater Fisheries Laboratory Library](#)
2. [Publically available Marine Scotland library search portal](#)
3. [Contents of Recent Journals \(CORJ\) Live Feed](#)
4. [Fisheries Management Literature Reference Database](#)



Fisheries literature titles available at the Freshwater Fisheries Laboratory Library.

Central Storage of Smolt Data

In April 2014, SFCC members supplied current and historical smolt data to Marine Scotland Science ([SFCC, 2014](#)), enabling a national assessment to be carried out. [Malcolm et al. \(2015\)](#) recommended development of central storage of smolt data to ensure consistent standards across Scotland (as set out in the draft wild fisheries strategy). Central storage would also remove the resource implication of collating data from across Scotland for future analysis. MSS have recently constructed a database called *Fish Observations*, with associated field-based recording software which can be installed on Windows machines. Utilising this technology, SFCC and MSS have this week begun a field trial collection of Smolt data with Lochaber and Cromarty Firth Fisheries Trusts. Based on this trial, options for widening access to central Smolt data storage for SFCC members will be considered for 2017.

The SFCC Electro-Fishing Database

SFCC's working relationship with SEPA continues to grow through the addition of SEPA's 549 electrofishing surveys to the electro-fishing database, taking the current number of records in the system to 22,329. SEPA site meta-data is now visible to SFCC members and if required the data can be shared between SEPA and SFCC and vice-versa.

In July 2015, SFCC members contributed again to the second phase of the national juvenile salmonid abundance analysis led by MSS, which has the aim of deriving a Scotland-wide model of juvenile salmonid abundance, allowing predictions of juvenile density within streams and catchments to be made. As part of this work, SFCC members were required to carry out an audit of survey site grid references. This task was facilitated by SFCC providing a simple web mapping tool.

MSS publications to date are available here: [Millar et al. 2015](#); [Millar et al. 2016](#).

TRAINING

SFCC continues to work closely with IFM as part of the Wild Fisheries Reform training work stream. In 2016, SFCC will be contributing to the working group currently being established to develop a fisheries training strategy.

Demand for electrofishing training to SFCC standards continues to exceed supply, with all courses in 2016 fully booked. In November 2015, SFCC ran the first web mapping course which has led to several Fisheries Trusts benefiting from this technology. Before Christmas we also commissioned PR Statistics to develop a statistics for biologists training course, the first of which was attended by a number of Fisheries Trusts. Courses are run based on demand registered in the annual questionnaire, so please be sure to complete this upon its circulation in December.

Course Title	Attendees since March 2015
Intro to Electrofishing	24
Team Leader	10
Team Leader Refresher	6
SFCC Habitat	6
Web Mapping	5
Statistics for Biologists	10
Mapping Fisheries Workshop	31

Attendee numbers on SFCC training courses



Statistics for biologists training course at SCENE, Loch Lomond



Nick Paling (Westcountry Rivers Trust) delivering a talk on drone surveys at the Mapping Fisheries workshop

Mapping Fisheries Workshop

The SFCC and IFM joint workshop was this year held in Edinburgh to share new mapping approaches and their application to fisheries management, which is the first time that a U.K. scale fisheries-mapping event has taken place. We would like to thank the 21 organisations who attended, including rivers and fisheries trusts, SNH, SEPA, MS, EA, Thames Estuary Partnership, Natural Living Assets, CBEC, APEM, Trimble, CEH, FBA and JBA Consulting. For those who were unable to attend, talks from the event are available [here](#).

Shared Training & Events Calendar

In 2015 SFCC launched an online public calendar to publicise fisheries events and training courses. This calendar is being regularly updated with events added by SFCC, IFM, ASFB, RAFTS and Fisheries Trusts. The calendar is available [here](#), and can be added to your computer or device. Please submit any events for inclusion in this calendar to s.dugan@marlab.ac.uk.

Management Committee dates for 2016 are **June 22nd, September 29th** and **November 30th**. All members are encouraged to join in person or remotely through the following connections:

Teleconference: **01224 294405**

Video Conference : **0131 242 5472**

Skype: **Scottishfisheries**