

# DEALING WITH THE KNOWLEDGE GAP IN MITIGATING THE IMPACT OF RENEWABLE ENERGY DEVELOPMENTS ON ATLANTIC SALMON POPULATION PRODUCTIVITY AND VIABILITY

Eric Verspoor  
Professor and Director



# Jumping Spider



Correspondence

## Lateral eyes direct principal eyes as jumping spiders track objects

Elizabeth M. Jakob<sup>1</sup>✉, Skye M. Long<sup>1</sup>, Duane P. Harland<sup>2,3</sup>, Robert R. Jackson<sup>3,4</sup>, Ashley Carey<sup>1</sup>, Mary Emma Searles<sup>1</sup>, Adam H. Porter<sup>1</sup>, Cristina Canavesi<sup>5,6</sup>, Jannick P. Rolland<sup>6</sup>

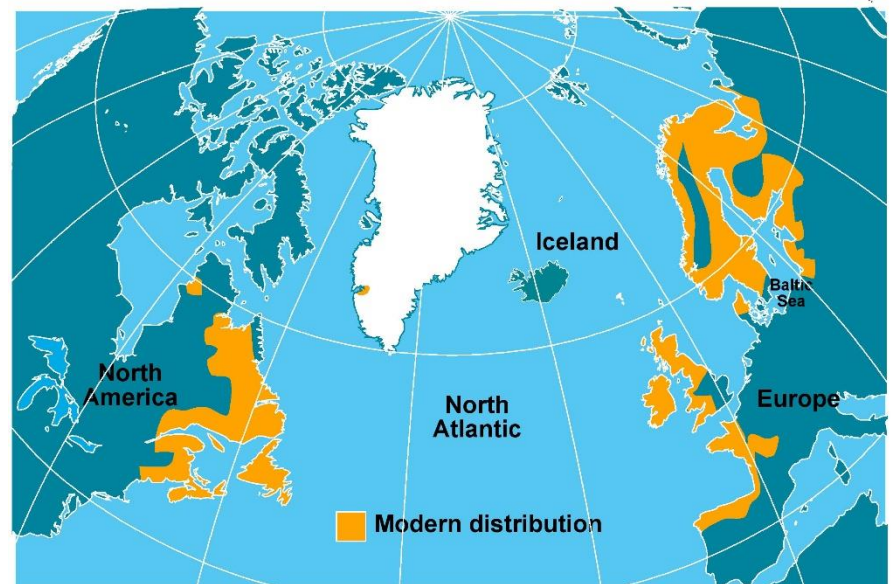
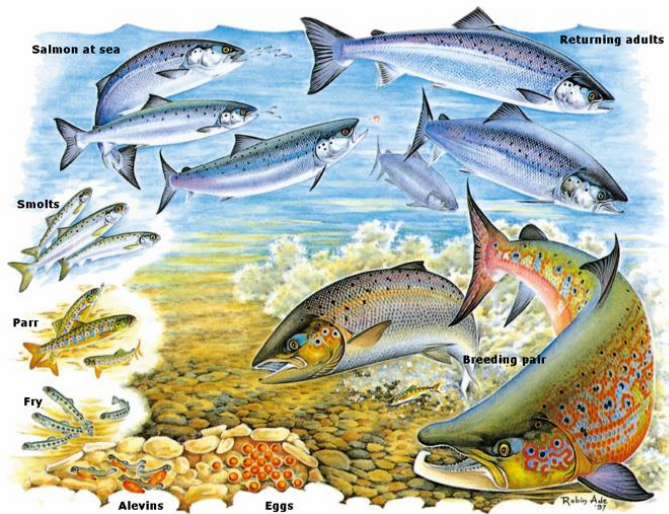
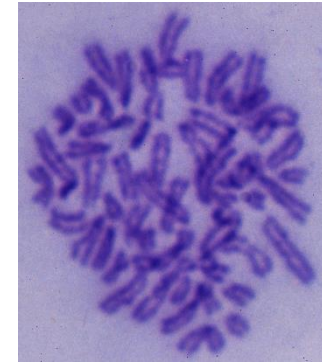
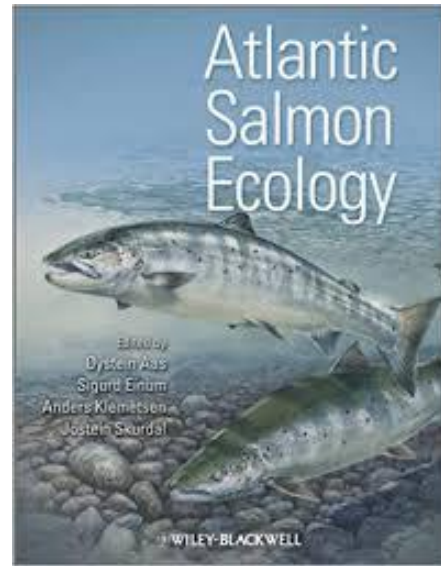
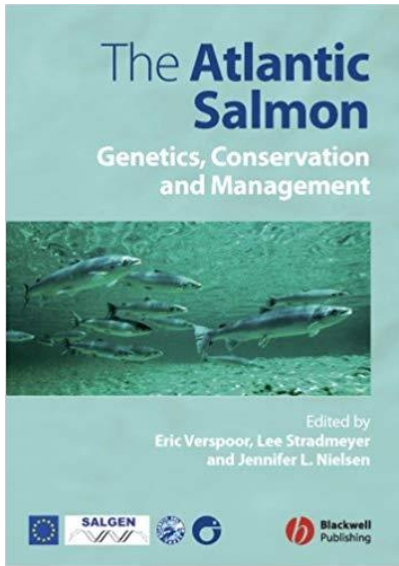




# Jumping Salmon







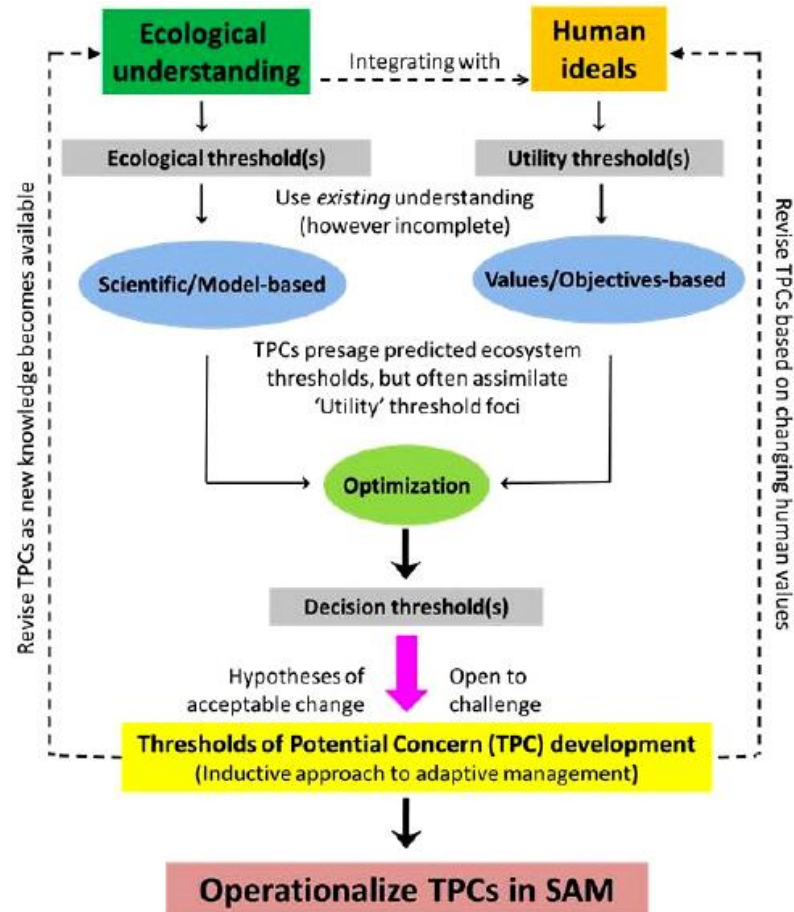


Wisdom is knowing what you  
don't know.

– Socrates

AZ QUOTES

# Adaptive Management

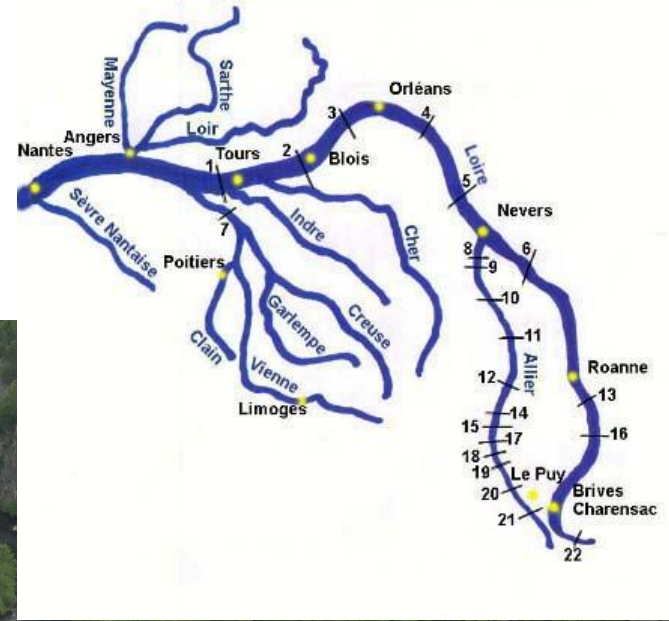




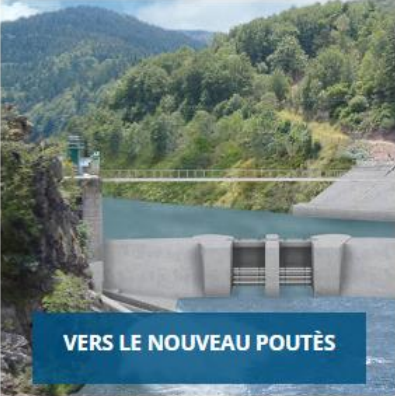
# The Loire Allier Salmon and La Nouvelle Poutes



Les principaux obstacles au saumon sur la Loire et l'Allier







**VERS LE NOUVEAU POUTÈS**



**INNOVER POUR LA BIODIVERSITÉ**



**INNOVER POUR LA SCIENCE**



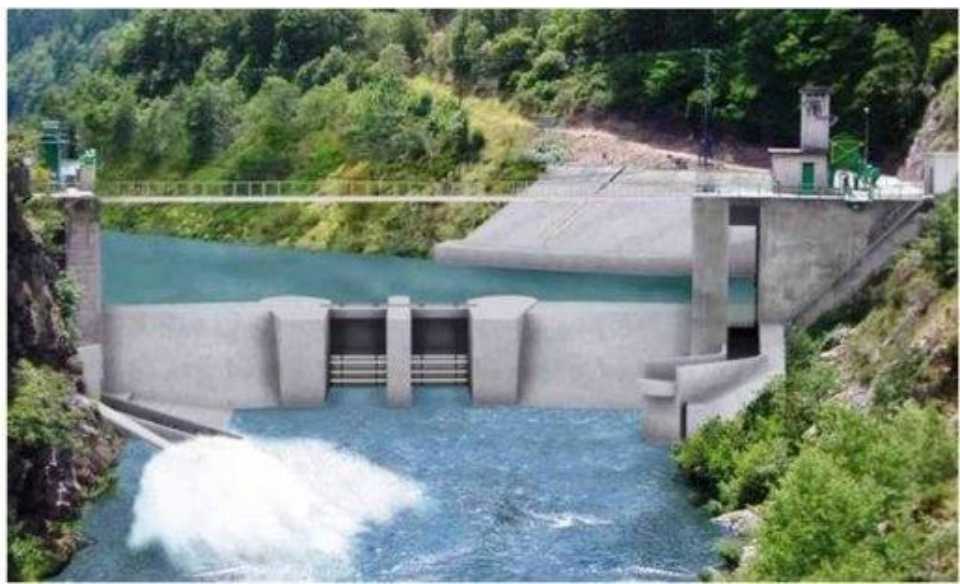
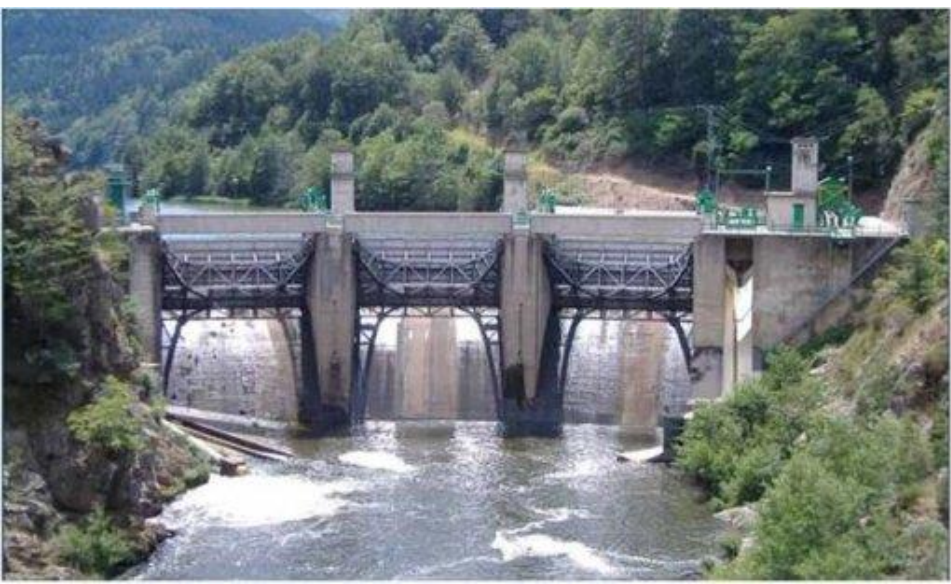
**LA VIE DU PROJET**



**MÉDIATHÈQUE & CONTACTS**

## Le nouveau Poutès UNE DÉMARCHE COLLABORATIVE UNIQUE

Pour comprendre la portée et l'importance d'un tel projet, il faut connaître le contexte de ses débuts difficiles : les opposants, les défenseurs, les enjeux, les batailles, les rebondissements... De longues années ont été nécessaires avant que naisse dans l'esprit de tous, le terreau fertile de la concertation, autour des enjeux essentiels du retour du saumon, de la restauration de la biodiversité et des milieux aquatiques.



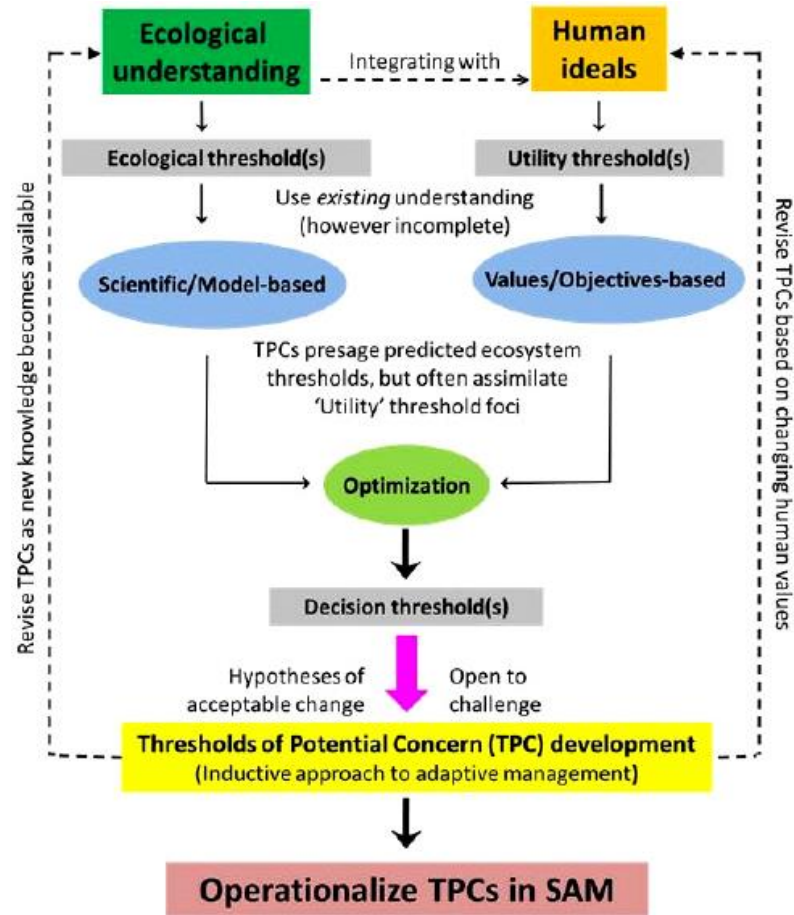


**Essentially Free downstream movement of  
fish with 85% energy production**





# Adaptive Management



**Adapting to a new reality.....**





**Thank you!**