

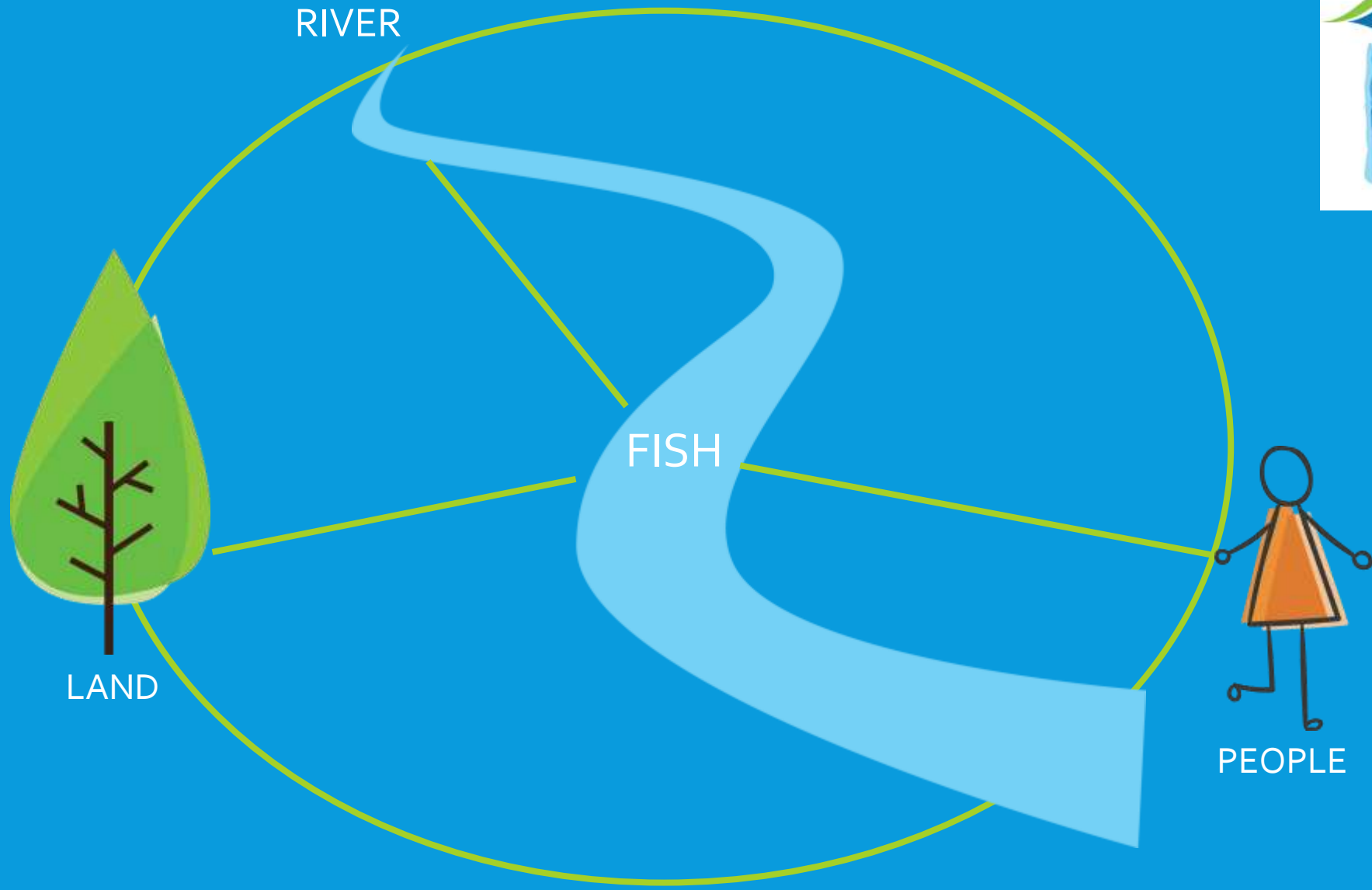


URBAN RIVERS: HOW TO BALANCE THE BENEFITS TO FISH, WILDLIFE AND PEOPLE

Kate Comins

RiverLife: Almond and Avon Project Co-ordinator

River Forth Fisheries Trust



RIVER

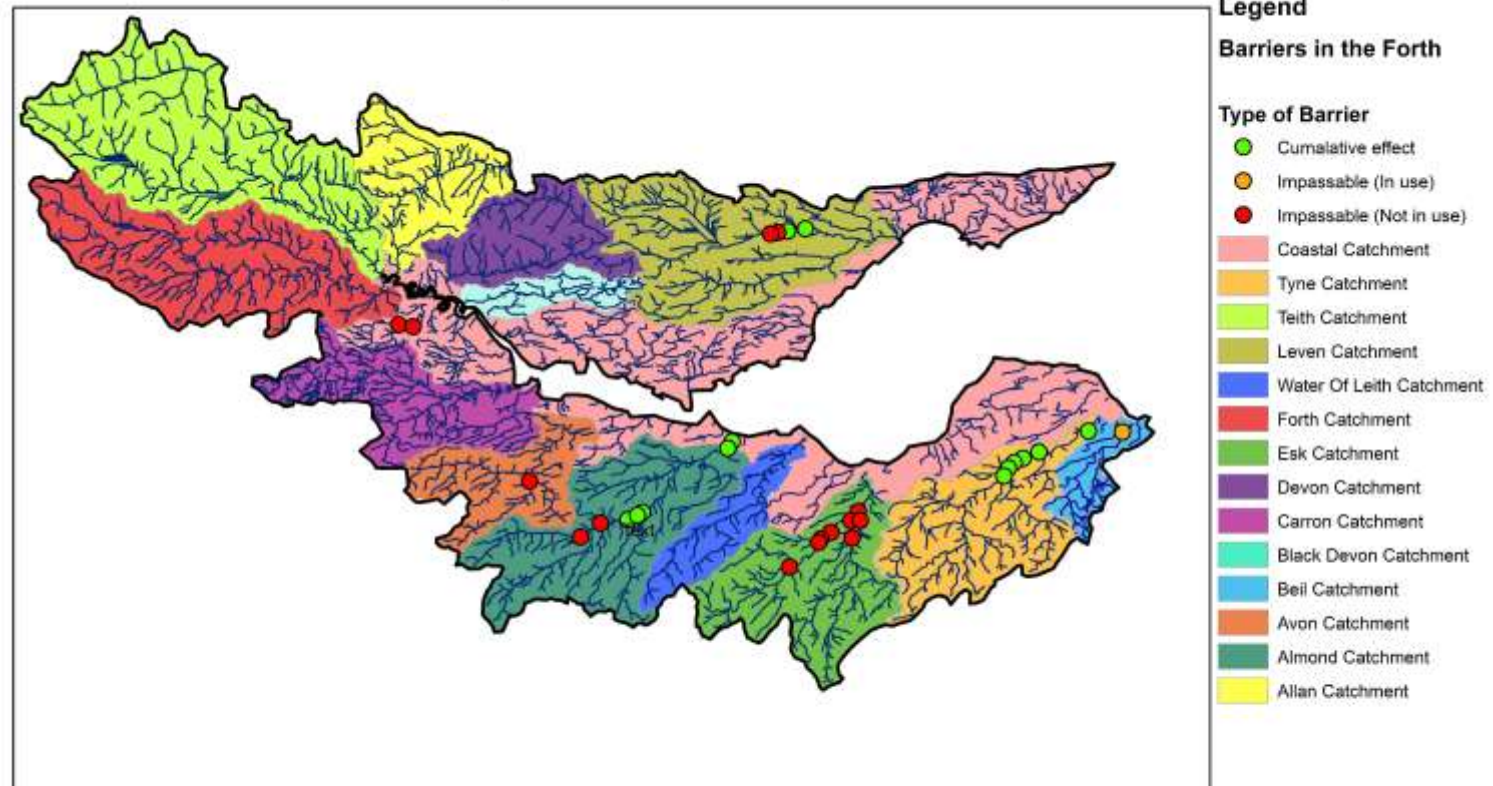
FISH

LAND

PEOPLE

THE RIVER FORTH DISTRICT

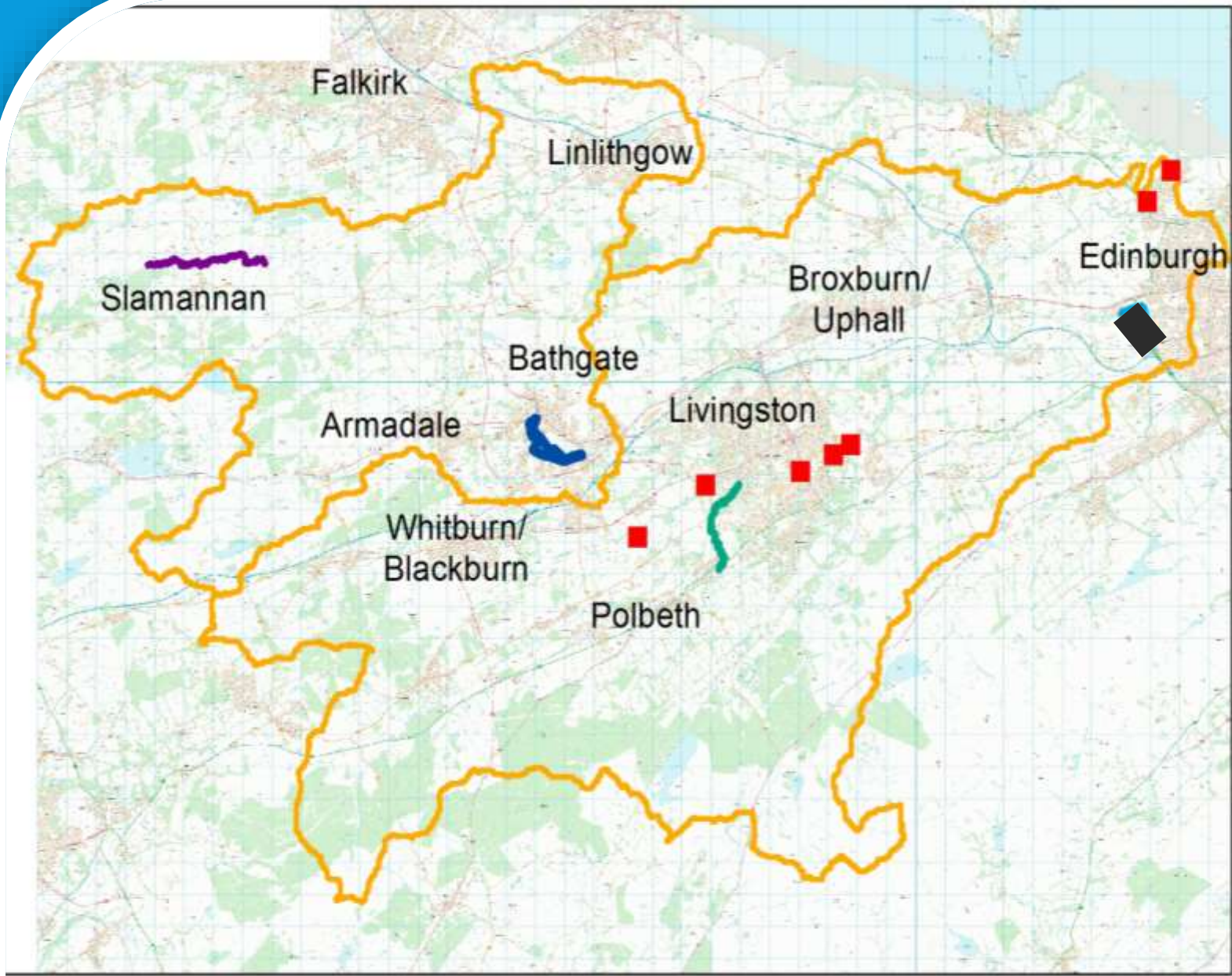
Priority Barriers in the Forth District



0 10 20 40 Miles

Based upon Ordnance Survey Mapping with the permission of the controller of Her Majesty's Stationery Office (HMSO) © Crown Copyright "Licence number 100051117". Unauthorised Reproduction Infringes Crown copyright and may lead to prosecution or civil proceedings. The River Forth Fisheries Trust. Scale 1:25,000





Legend

- River Almond Barriers
- Upper Avon Restoration Projects
- Killadean Blue/Green Network
- alm av programme boundary
- Bathgate Water Restoration Project Boundary



Contains OS data © Crown copyright River Forth Fisheries Trust 2015









**RECONNECTING
COMMUNITIES &
WILDLIFE TO THEIR
LOCAL RIVERS**

RIVERLIFE: PROJECT FUNDERS





Restoration Projects

Engagement Activities

RESTORATION PROJECTS



Almond Catchment

Barriers Project

Killandean Blue / green
Network

Avon Catchment

Bathgate Water Restoration
Project

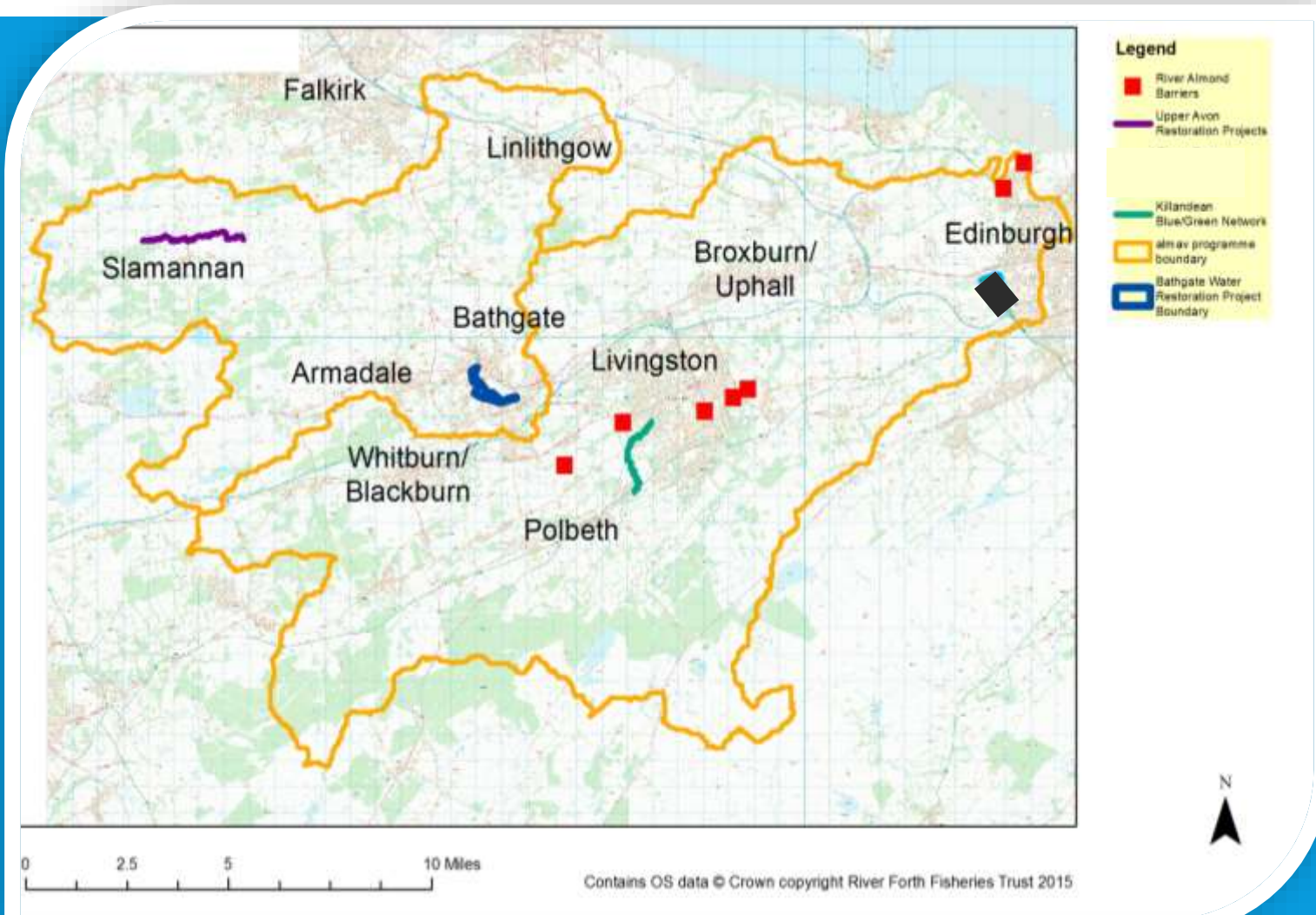
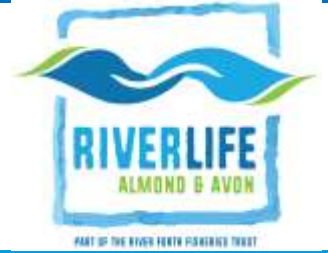
Upper Avon Restoration
Project

Almond & Avon Catchments

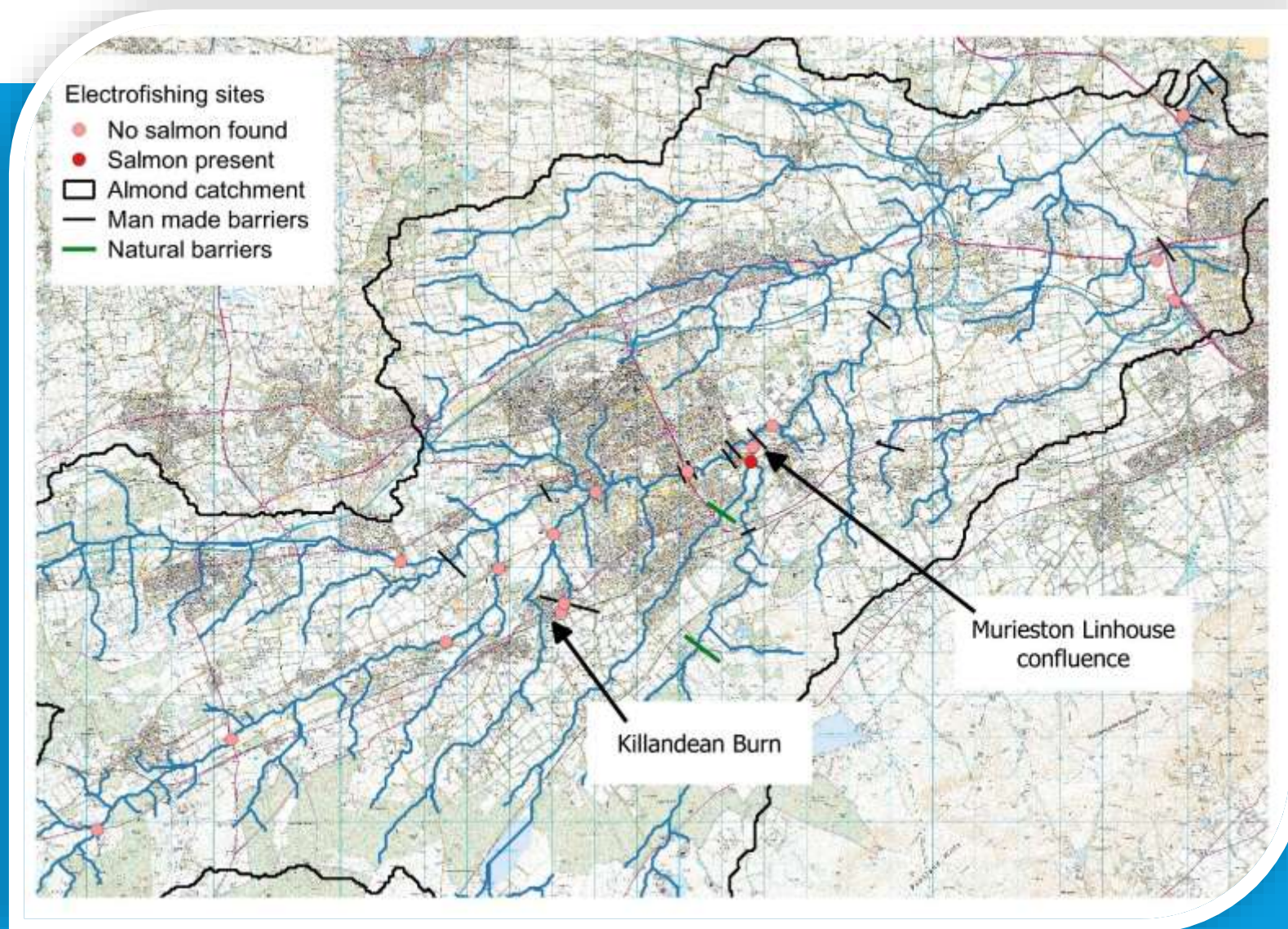
INNS

RiverFly Monitoring

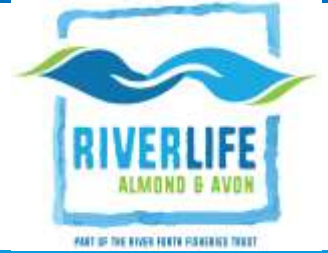
RESTORATION PROJECTS



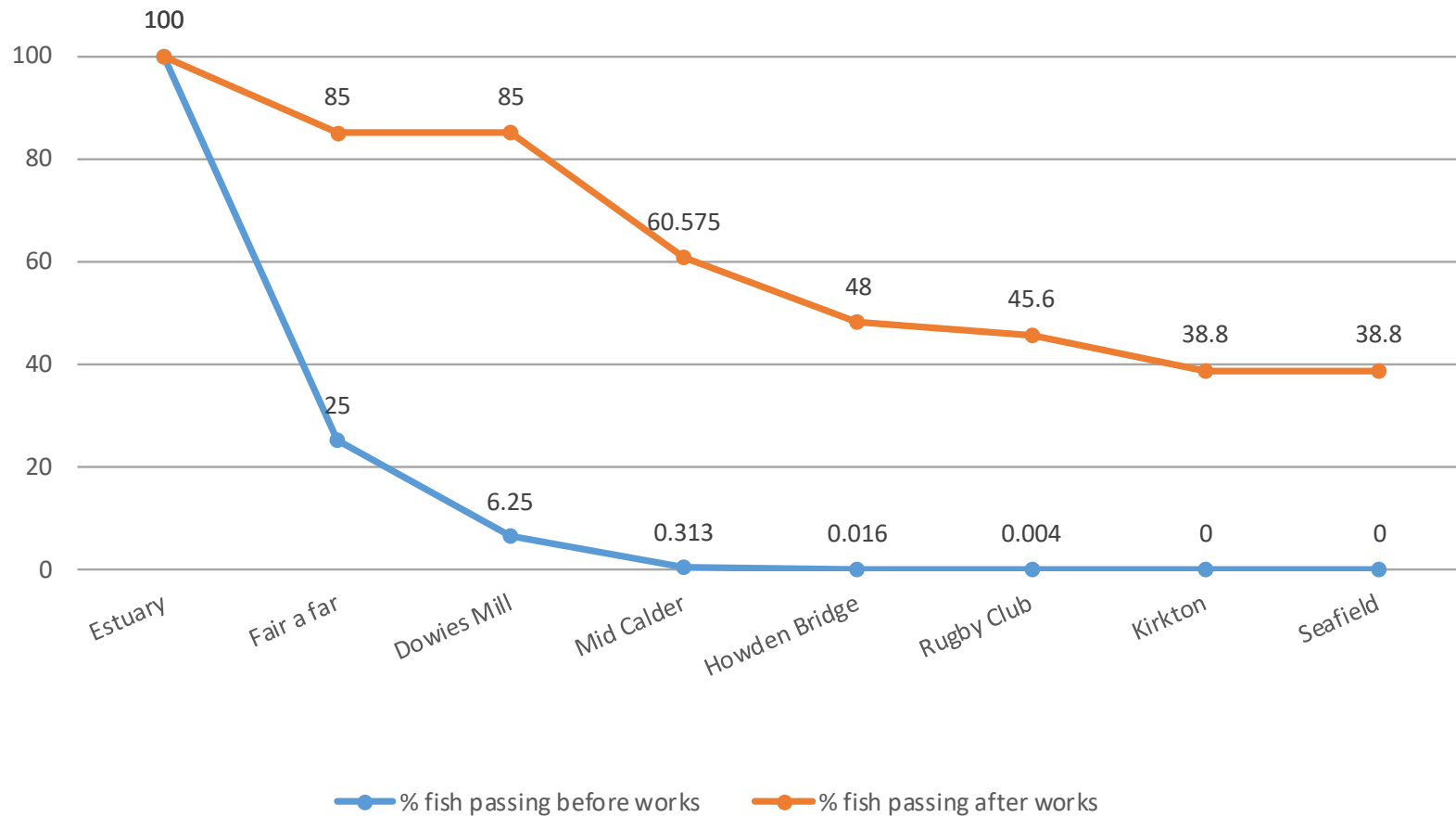
ALMOND BARRIERS



ALMOND BARRIERS

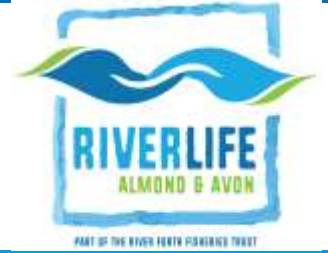


Cumulative passability of River Almond Weirs





ALMOND BARRIERS: FAIR-A-FAR

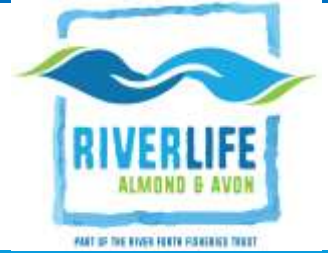


ALMOND BARRIERS: FAIR-A-FAR



View flat at a comfortable arm's length

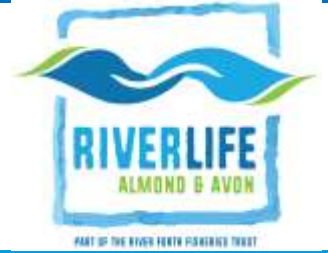
ALMOND BARRIERS: FAIR-A-FAR



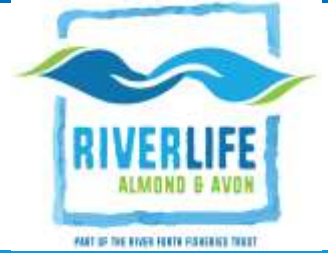
View flat at a comfortable arm's length



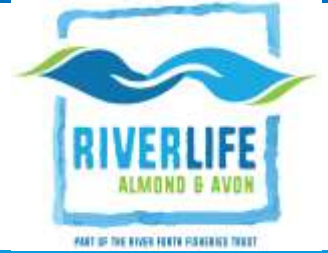
ALMOND BARRIERS: DOWIES MILL



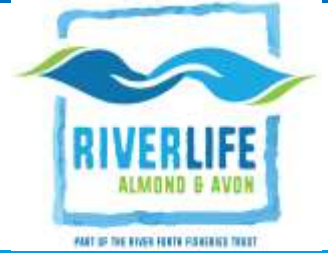
ALMOND BARRIERS: KIRKTON



ALMOND BARRIERS: KIRKTON

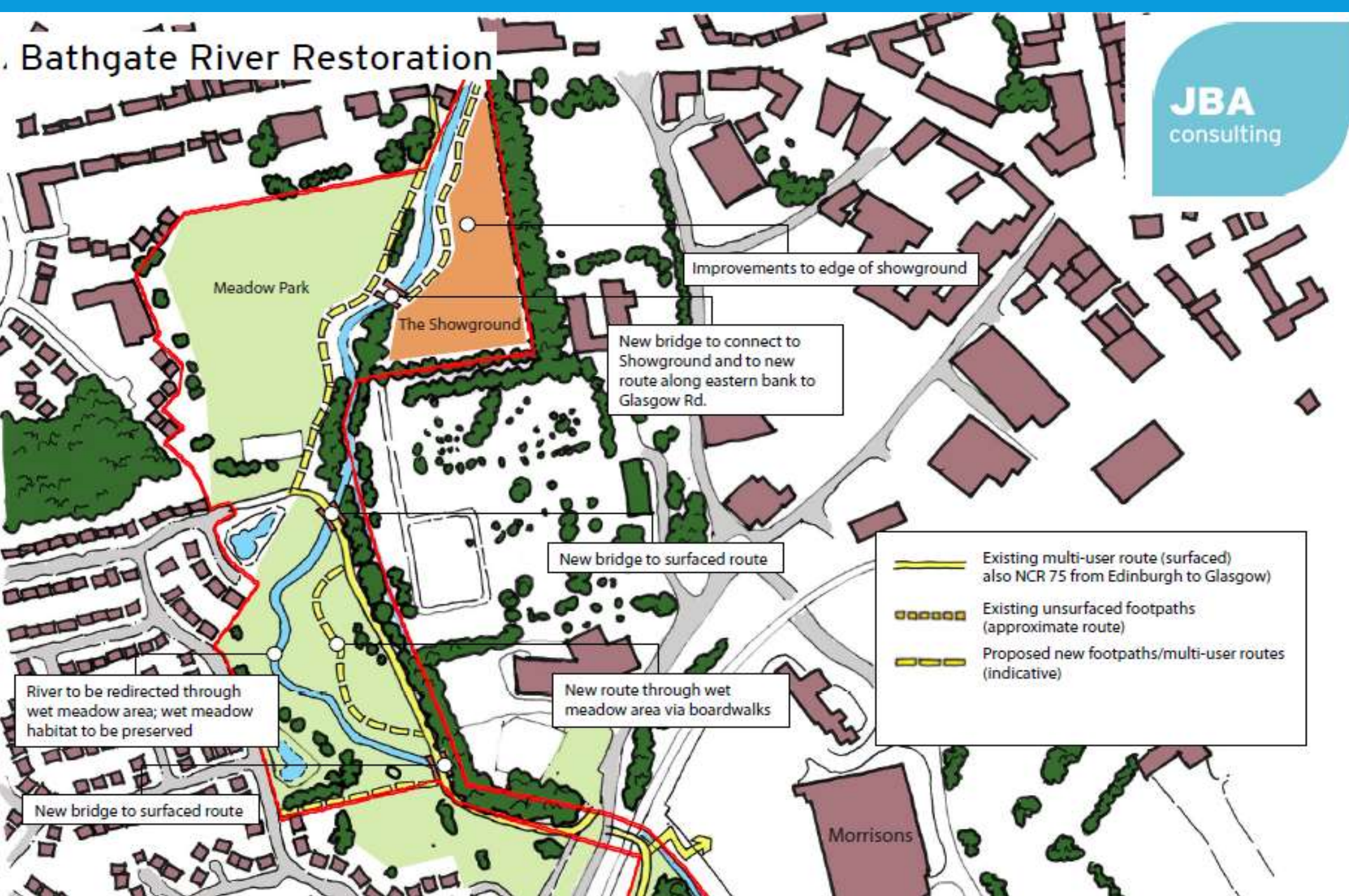


BATHGATE WATER



Bathgate River Restoration

JBA
consulting



Improvements to edge of showground

New bridge to connect to Showground and to new route along eastern bank to Glasgow Rd.

New bridge to surfaced route

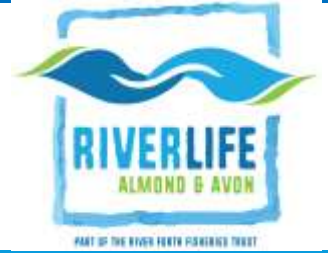
New route through wet meadow area via boardwalks

River to be redirected through wet meadow area; wet meadow habitat to be preserved

New bridge to surfaced route

- Existing multi-user route (surfaced) also NCR 75 from Edinburgh to Glasgow
- Existing unsurfaced footpaths (approximate route)
- Proposed new footpaths/multi-user routes (indicative)

ENGAGEMENT ACTIVITIES



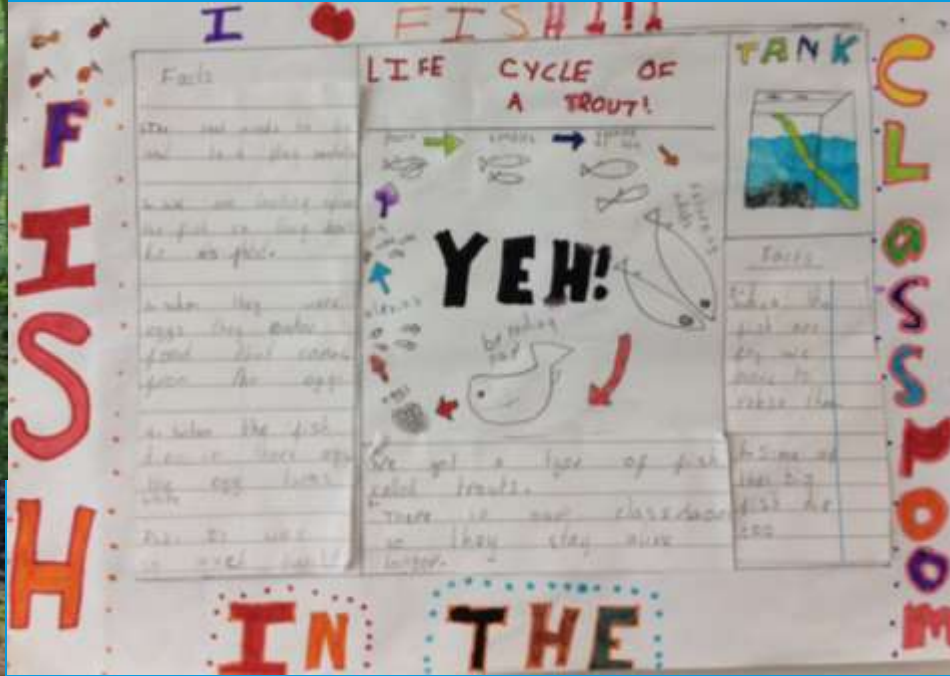
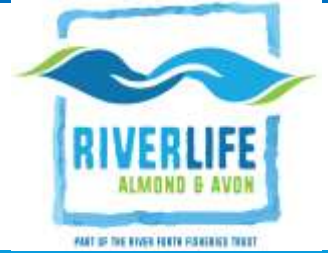
Training

Education and learning

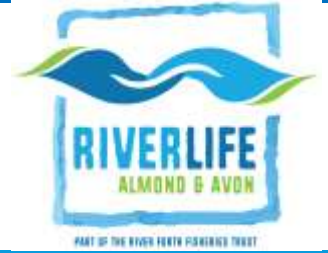
Activities and interpretation

Volunteering opportunities

ENGAGEMENT ACTIVITIES



BY 2020



Water Bodies status improved

Communities engaged

INNS reduced

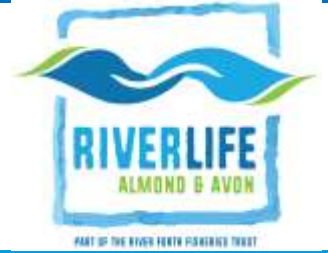
RBMP objectives met

RFFT capacity increased

Stewardship of rivers secured

Amenity improved

BY 2020



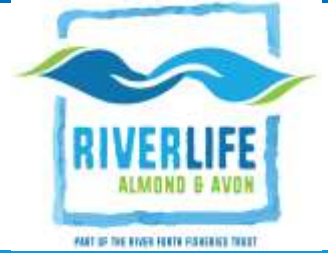
Fishery enhanced

**Additional returning
adults**

**Increased juvenile
productivity**

**Greater areas of
accessible habitat**

THANK YOU



Kate Comins

RiverLife: Almond and Avon Project Coordinator

k.comins@fishforth.co.uk

@MyRiverLife

#MyRiverLife