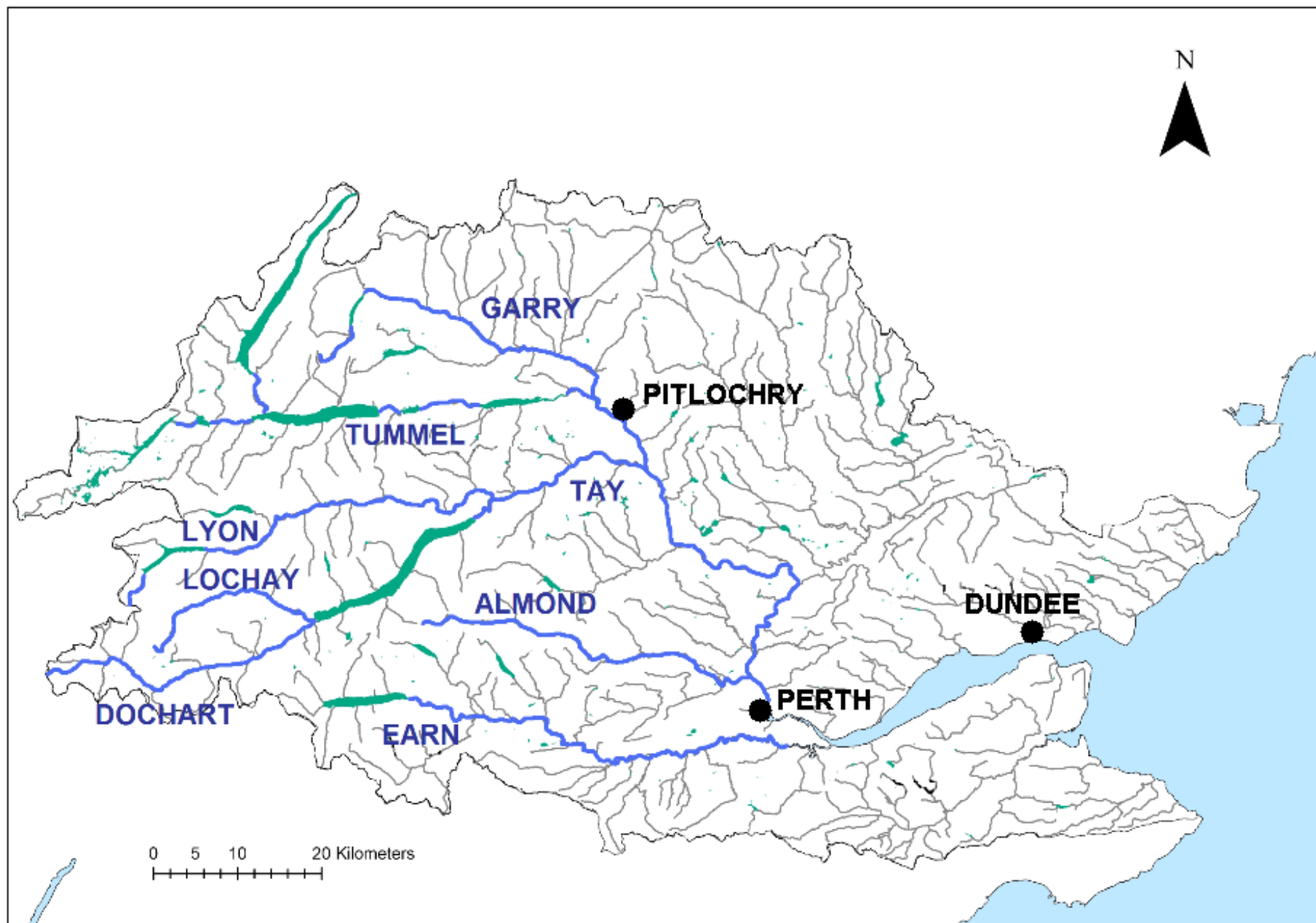


# Potential impacts of Hydro on Salmon

Dr David Summers

Tay District Salmon Fisheries Board

# River Tay

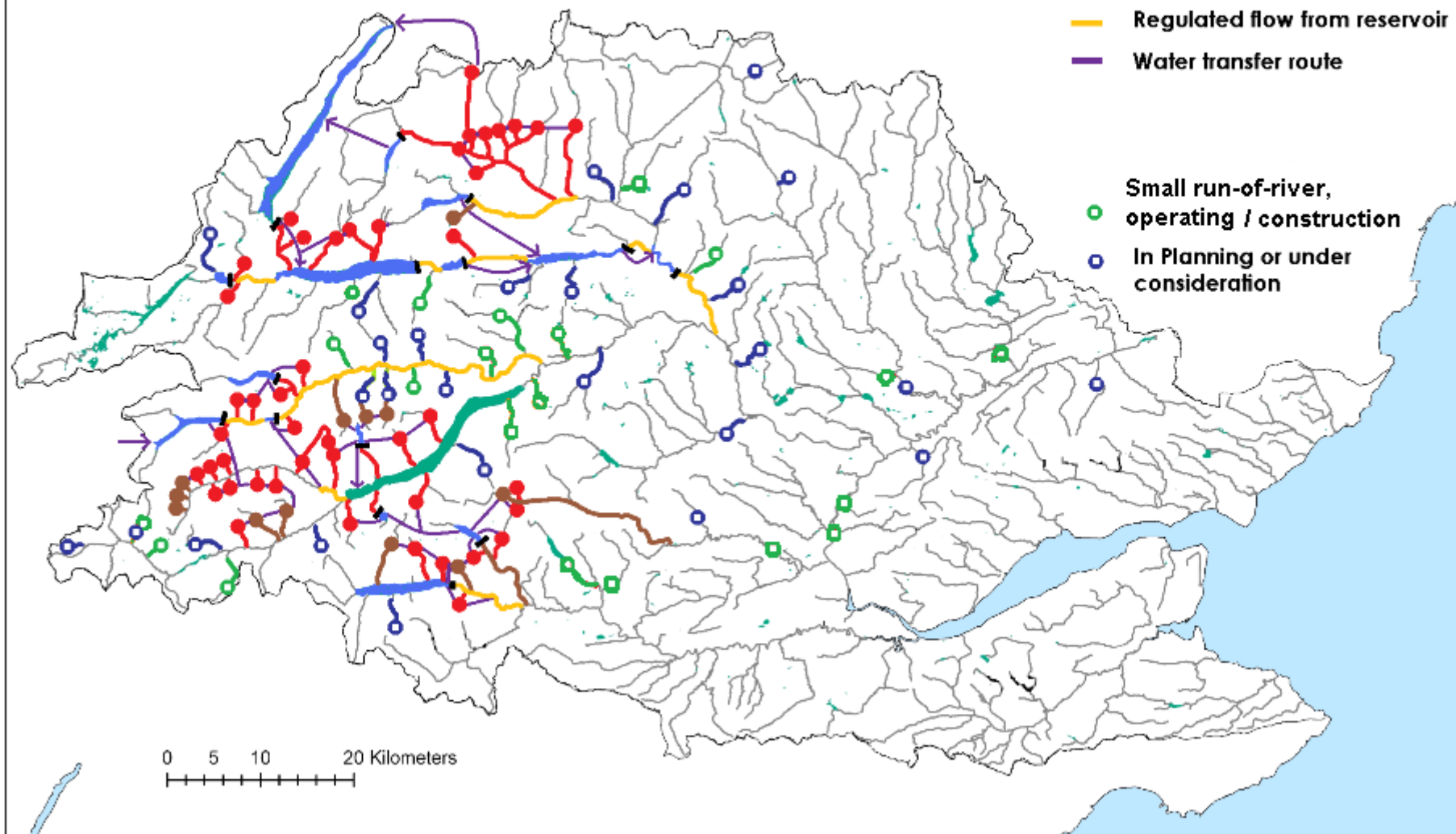


## Hydro abstractions in the Tay district (this was a few years ago!)

### Types of Intakes

- SSE - Total abstraction
- SSE - Some mitigation present
- Regulated flow from reservoir
- Water transfer route

- Small run-of-river, operating / construction
- In Planning or under consideration



# Main Hydro Issues for Salmon

- Adult salmon upstream passage
- Downstream passage of smolts (and kelts)
- Water abstraction impacts on juvenile production
- Effects of regulated flows?

- Adult salmon upstream passage





















- Downstream passage of smolts (and kelts).













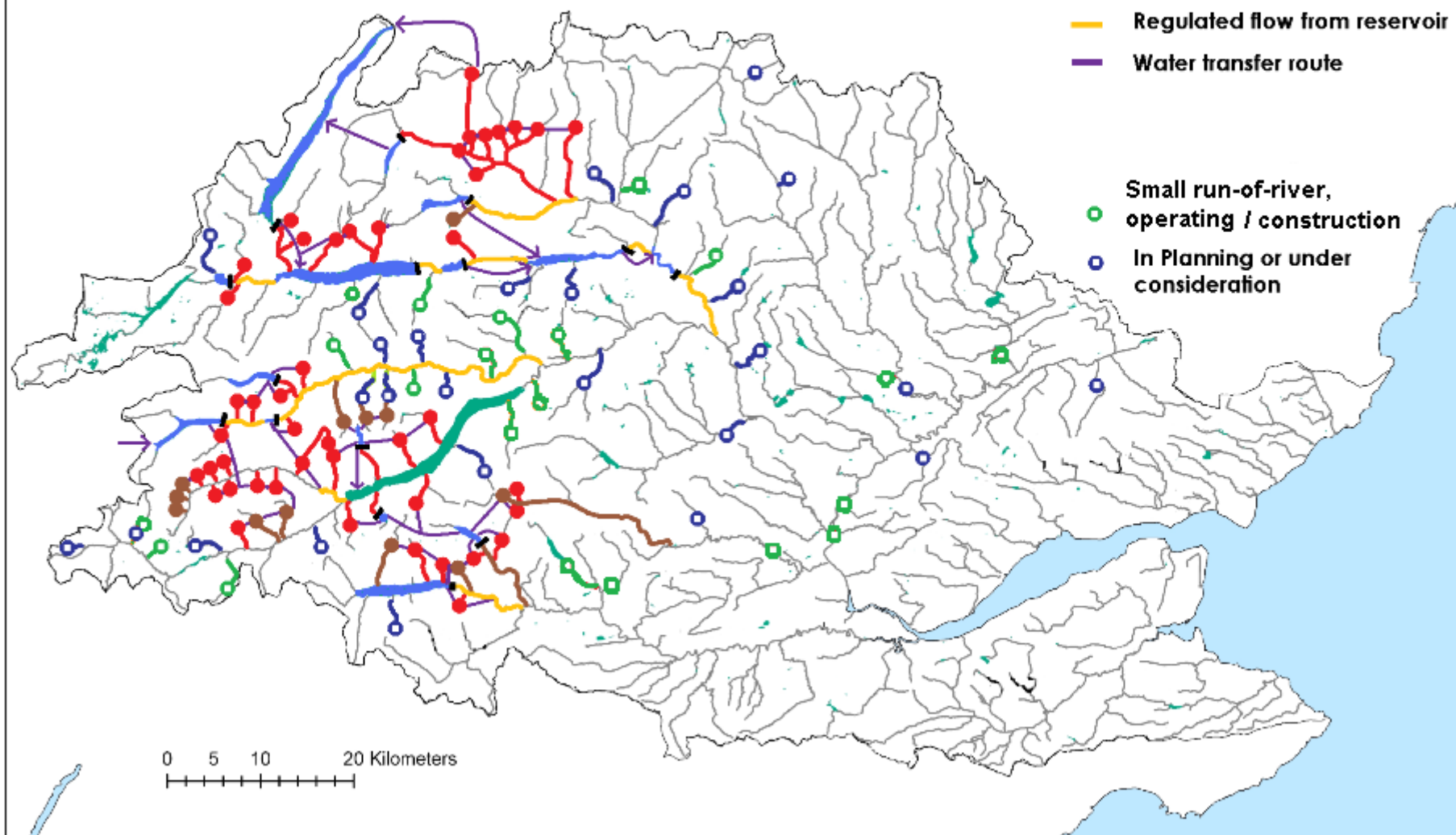
- Water abstraction impacts on juvenile production

## Hydro abstractions in the Tay district (this was a few years ago!)

### Types of Intakes

- SSE - Total abstraction
- SSE - Some mitigation present
- Regulated flow from reservoir
- Water transfer route

- Small run-of-river, operating / construction
- In Planning or under consideration





















- Effects of regulated flows?

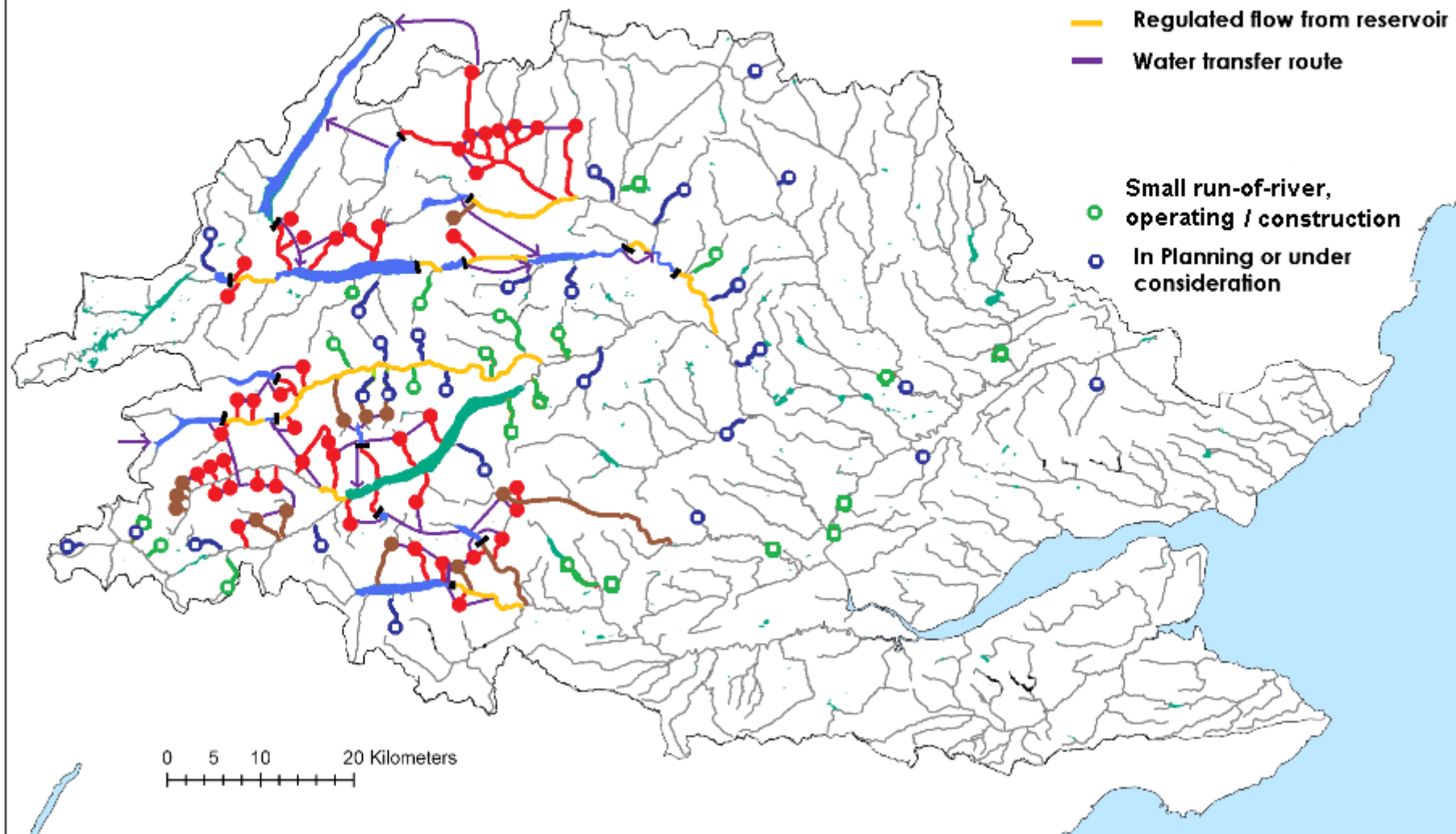


## Hydro abstractions in the Tay district (this was a few years ago!)

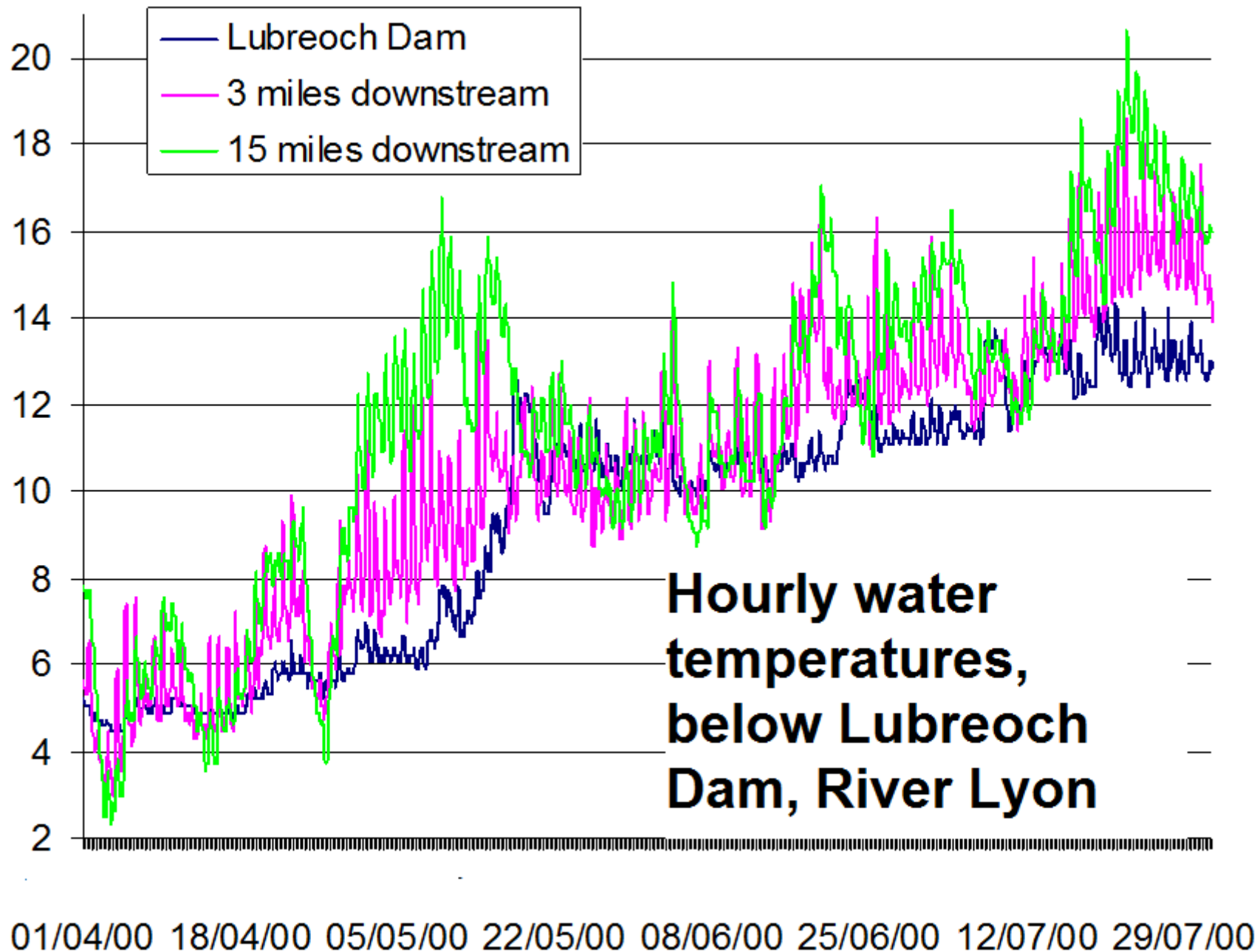
### Types of Intakes

- SSE - Total abstraction
- SSE - Some mitigation present
- Regulated flow from reservoir
- Water transfer route

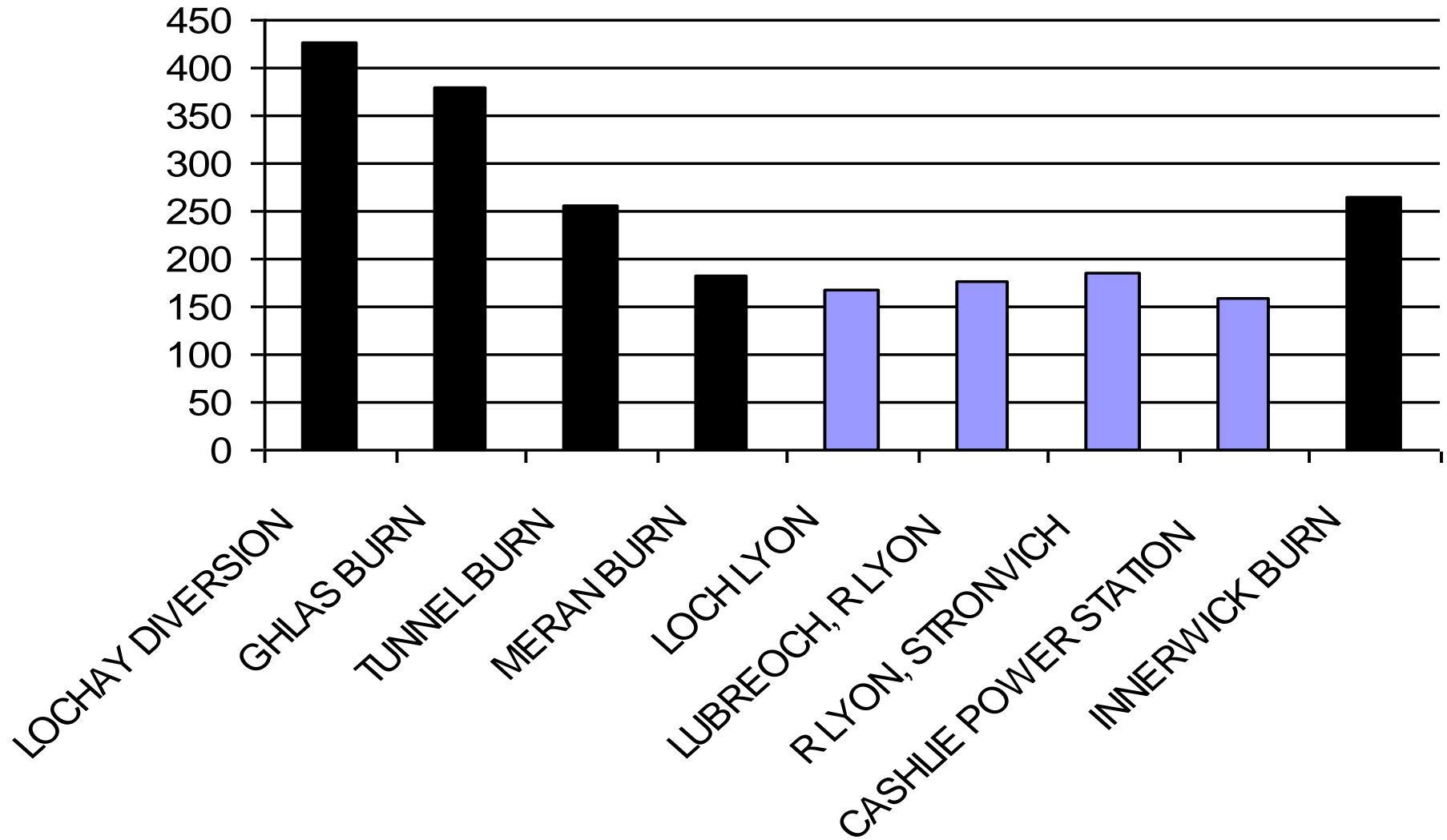
- Small run-of-river, operating / construction
- In Planning or under consideration







## Average concentration of calcium



To Conclude