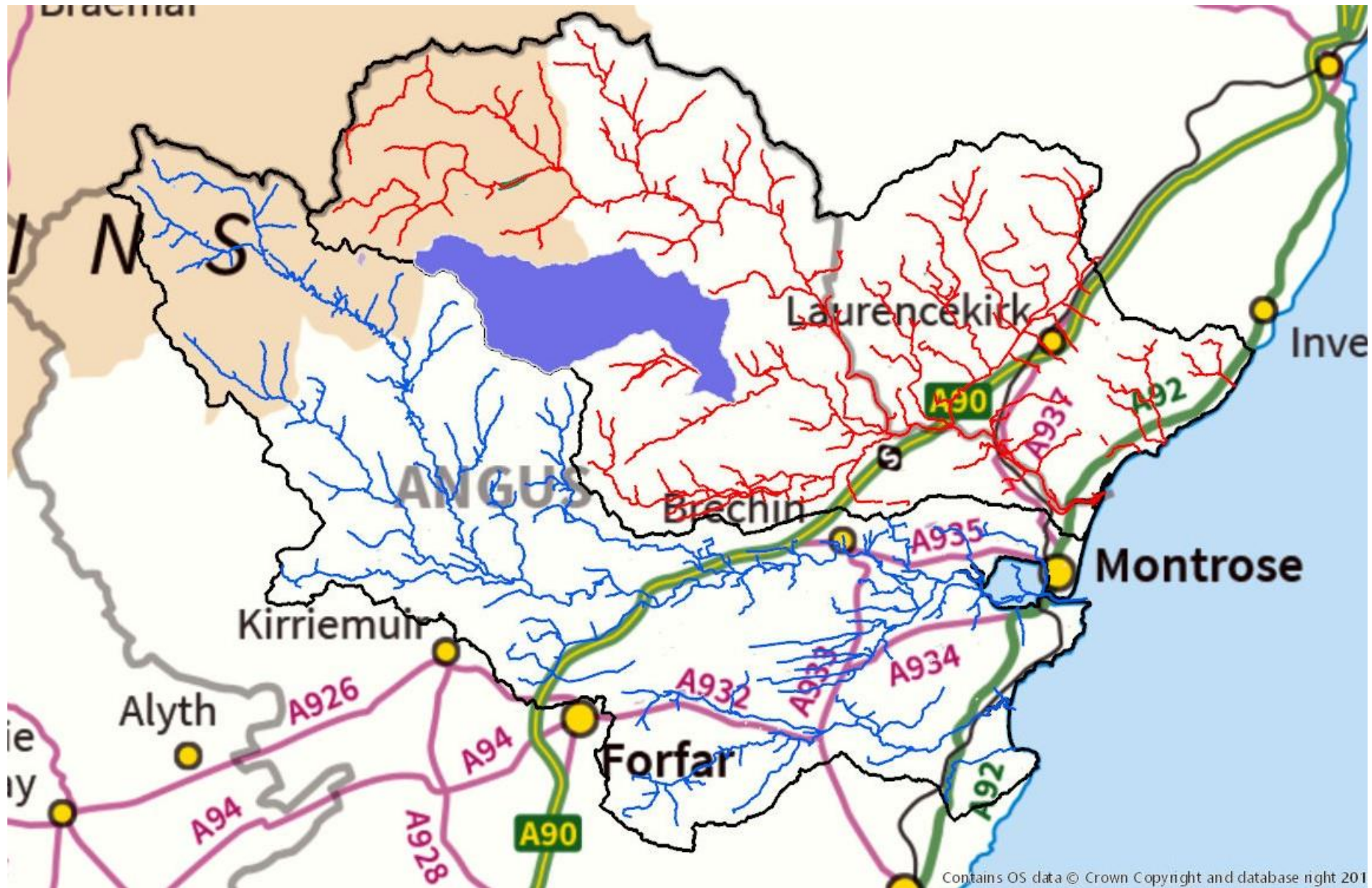




Rivers & Fisheries Trust





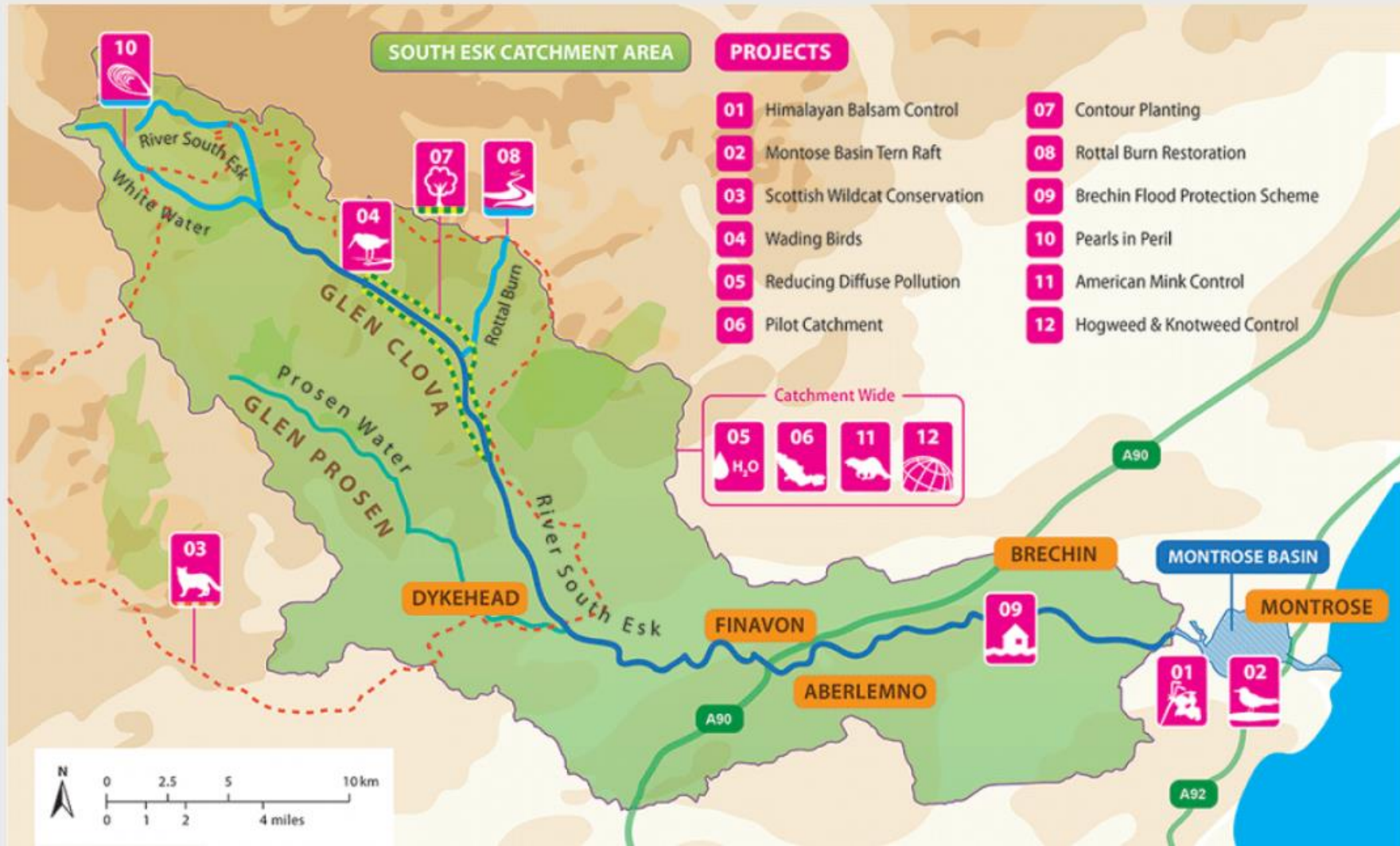
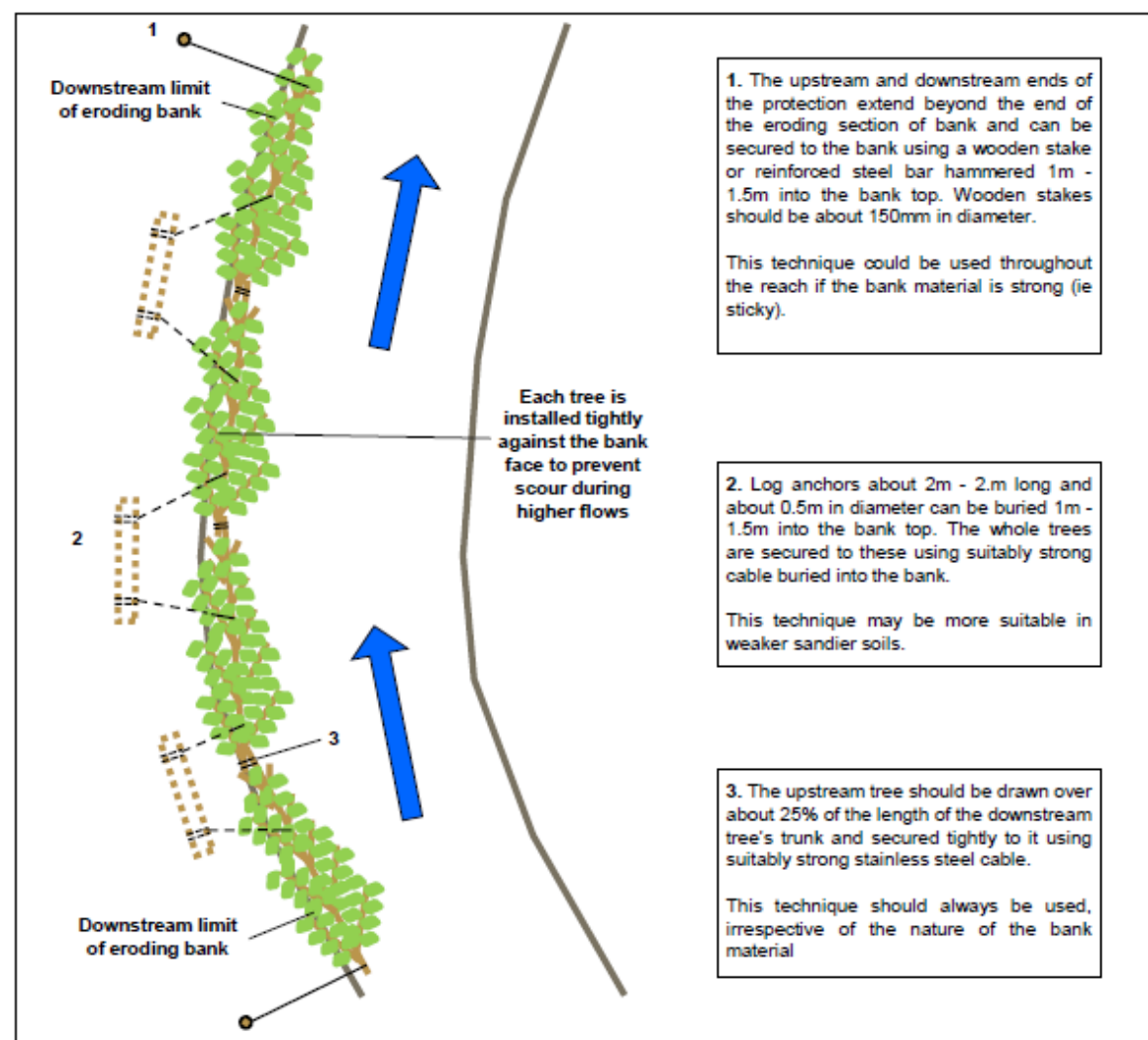
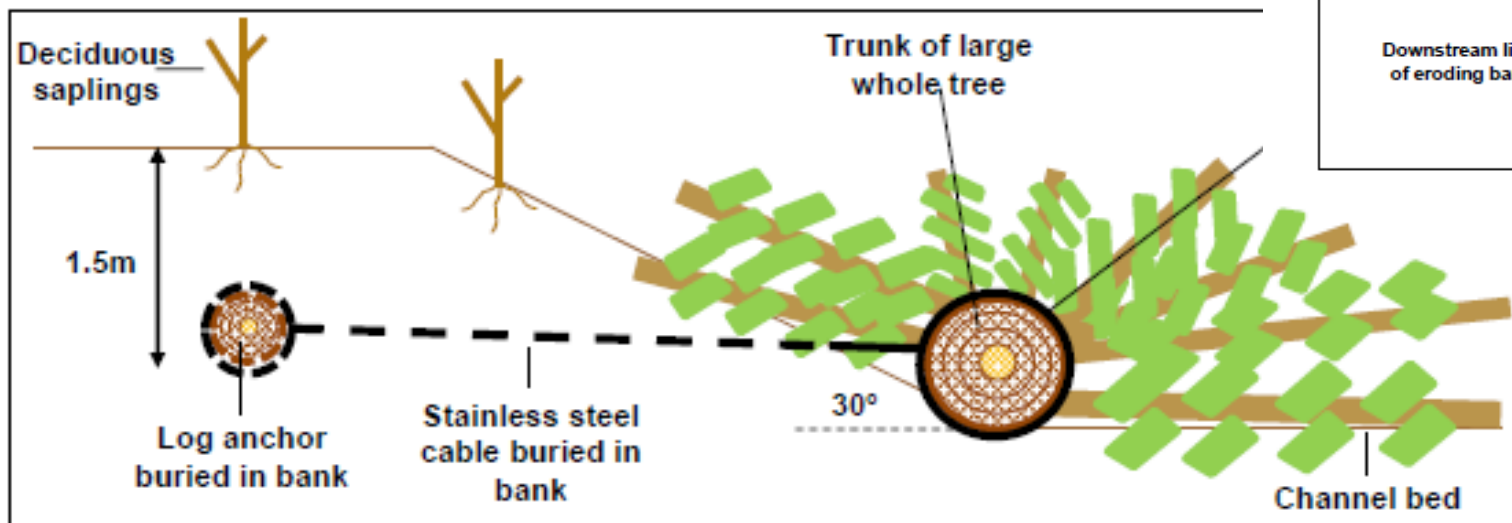


Figure 13d: Cross-sectional view of large whole tree placement steel cabling attached to log anchors buried in the bank



1. The upstream and downstream ends of the protection extend beyond the end of the eroding bank and can be secured to the bank using a wooden stake or reinforced steel bar hammered 1m - 1.5m into the bank top. Wooden stakes should be about 150mm in diameter.

This technique could be used throughout the reach if the bank material is strong (ie sticky).

2. Log anchors about 2m - 2.5m long and about 0.5m in diameter can be buried 1m - 1.5m into the bank top. The whole trees are secured to these using suitably strong cable buried into the bank.

This technique may be more suitable in weaker sandier soils.

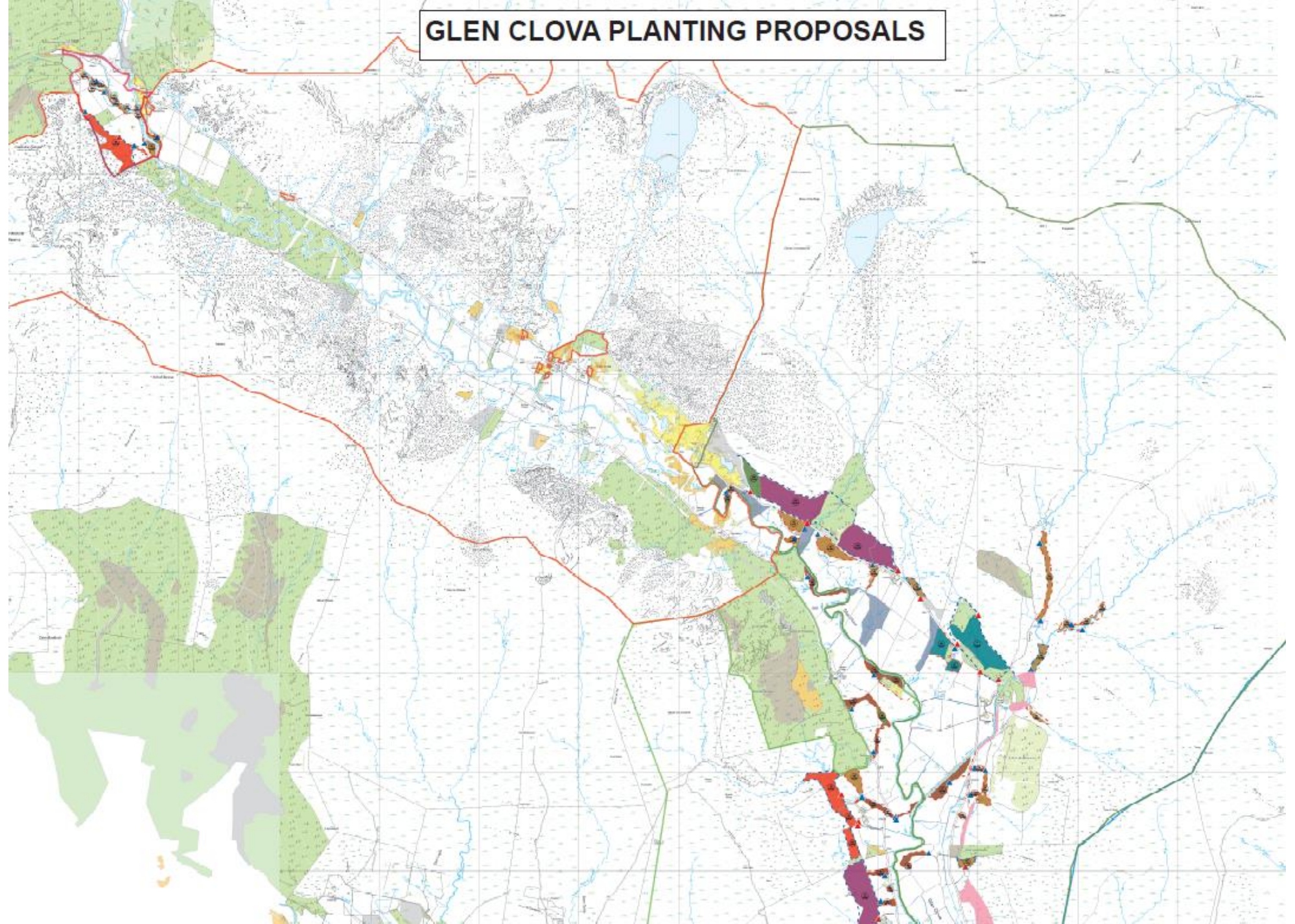
3. The upstream tree should be drawn over about 25% of the length of the downstream tree's trunk and secured tightly to it using suitably strong stainless steel cable.

This technique should always be used, irrespective of the nature of the bank material



27/08/2018 14:31

GLEN CLOVA PLANTING PROPOSALS





02/08/2019

THE MINK
ARE ON
THE MOVE!



Can you help
monitor for the
invasive
American mink
by adopting a
mink raft?



NEWS / LOCAL / ANGUS & THE MEARNS

Rivers in the classroom initiative launches on South Esk



by **Graeme Strachan**

🕒 February 1 2019, 8.52am





