



National Adult Salmon Sampling Project

Wild Salmon Strategy

VISION: "Scotland's wild Atlantic salmon populations are flourishing..."

OBJECTIVE: "Wild salmon management is evidence-based..."

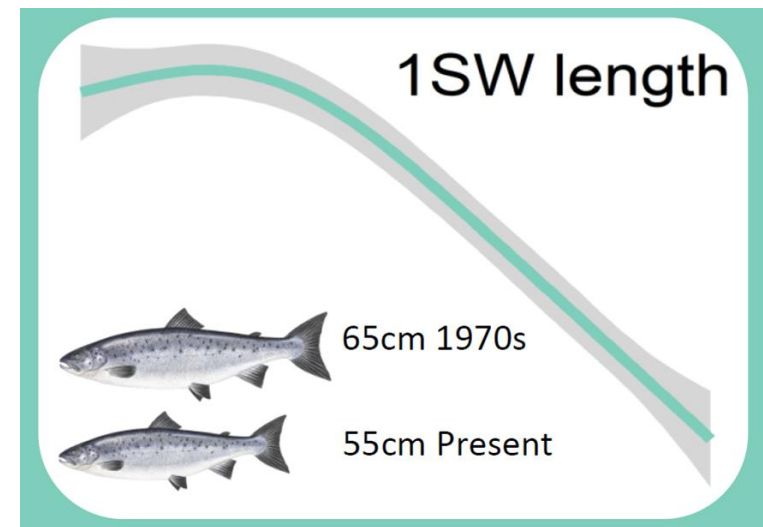


Why sample adult salmon?

Not all about numbers of salmon

- Skinny grilse
- Changes in age structure
- Size matters in stock assessments
 - smaller females contain fewer eggs: 125 females needed in 2010s to produce the same number of eggs as 100 in the 1970s

Samples no longer available from commercial netting stations so need to look at other options.



Data Collection

Standard Operating Procedure

Sharing of best practice and equipment

Web-based recording form

Location, fish data, scales used, photos, ID



Ness DSFB

Feedback Post-sampling

Sedation and sampling during low flows

Good relationships developing with anglers for future

Biologist sampling resource intensive

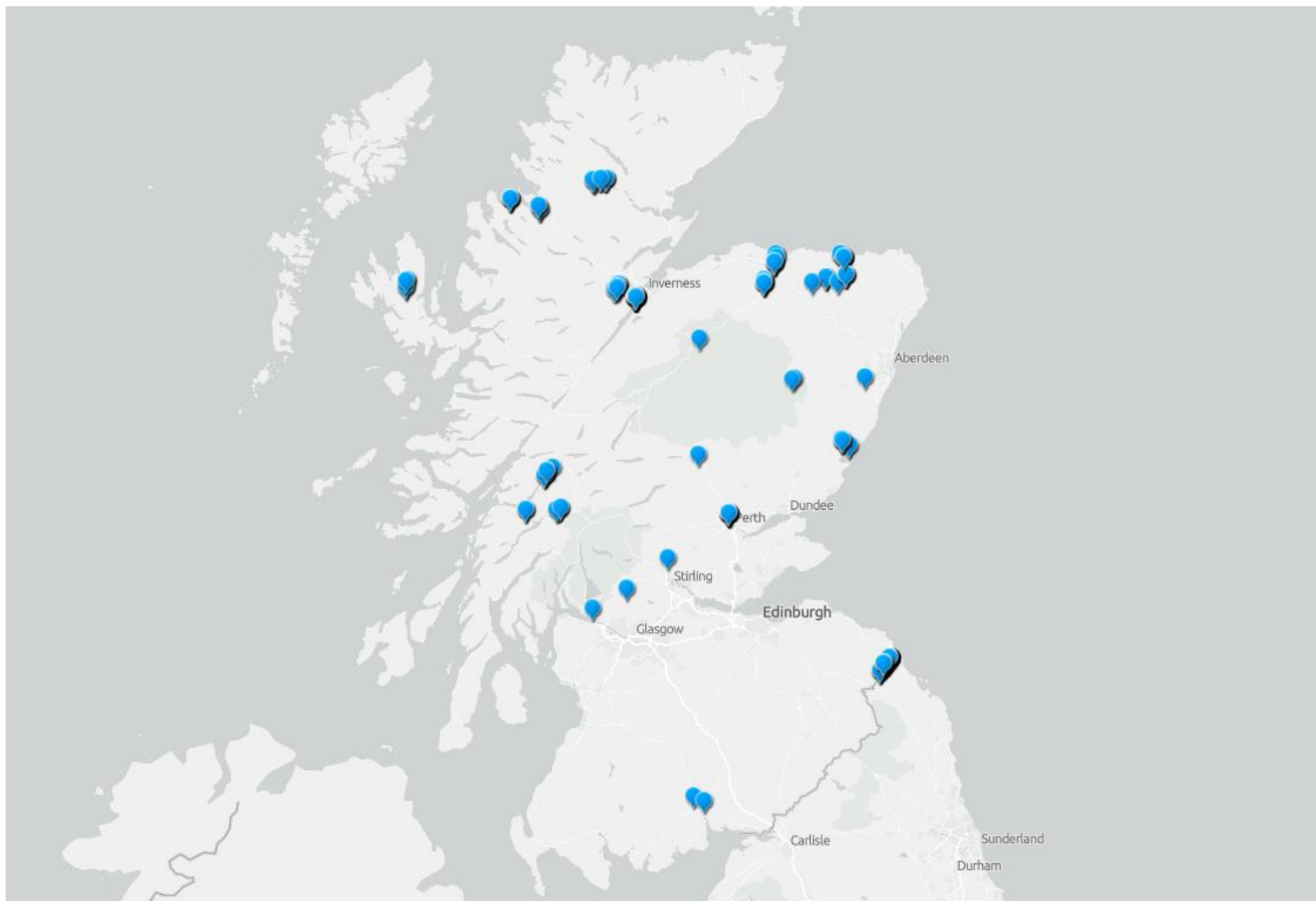
Measuring boards, slings and digital scales

Sea trout sampling?



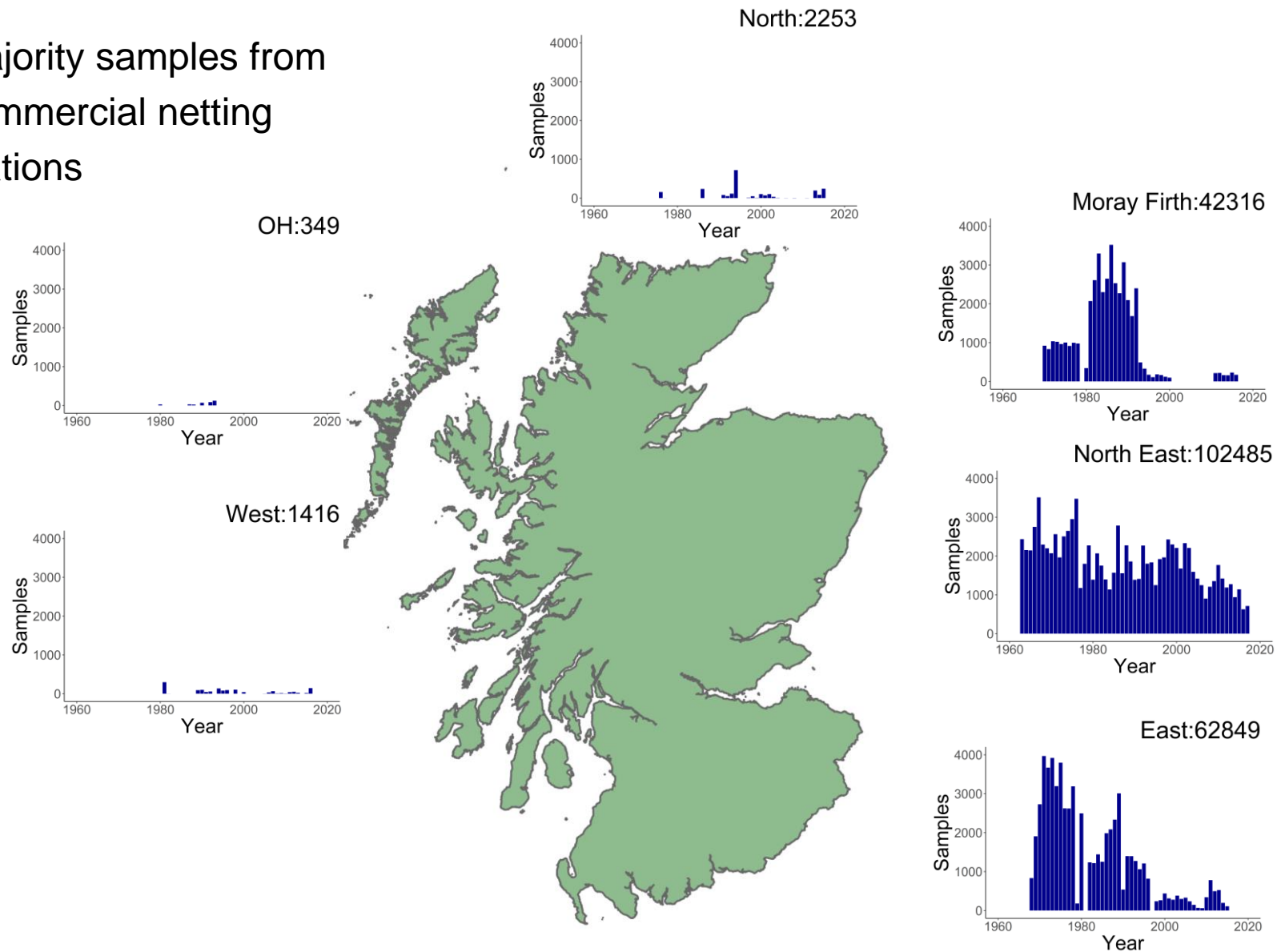
Wester Ross Fisheries Trust

Map of Samples



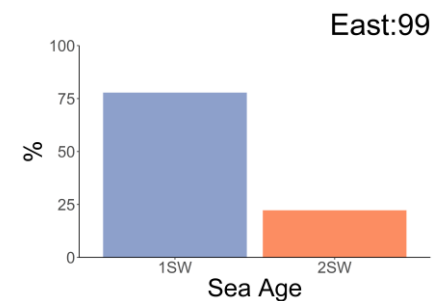
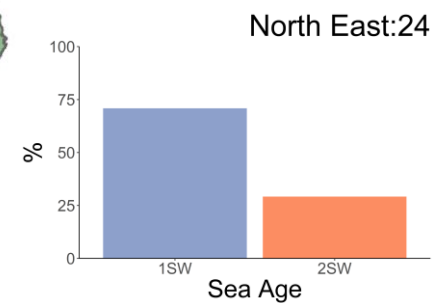
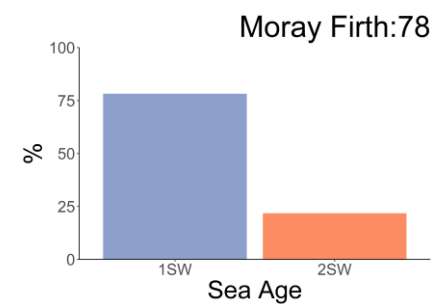
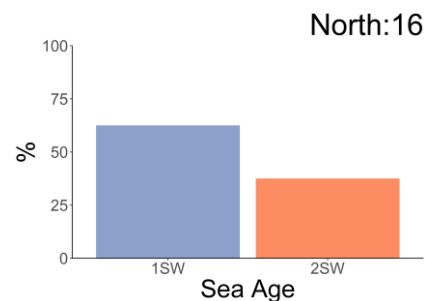
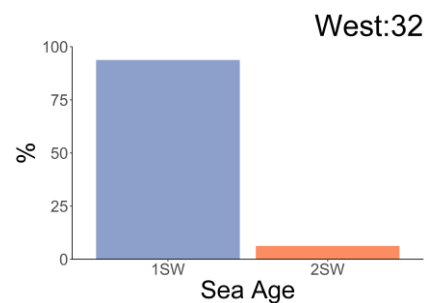
Historic Sampling

Majority samples from commercial netting stations

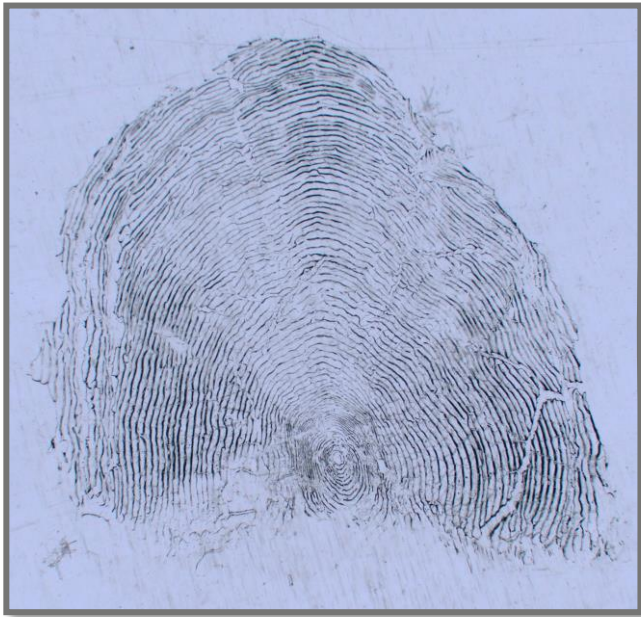


Sea Ages

More 1SW fish
on the West
Coast than the
East



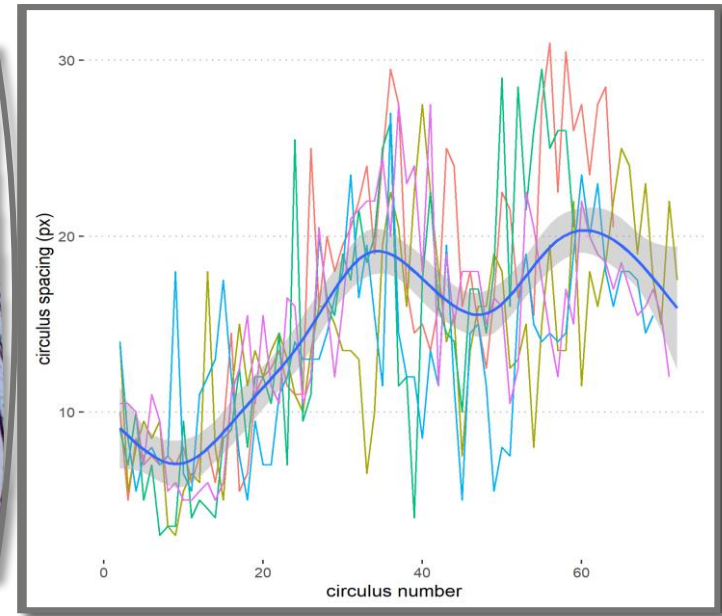
Scale images



Gruinard River
74 cm, 4 kg
2 yr old smolt
1 yr at sea
2 spawning marks



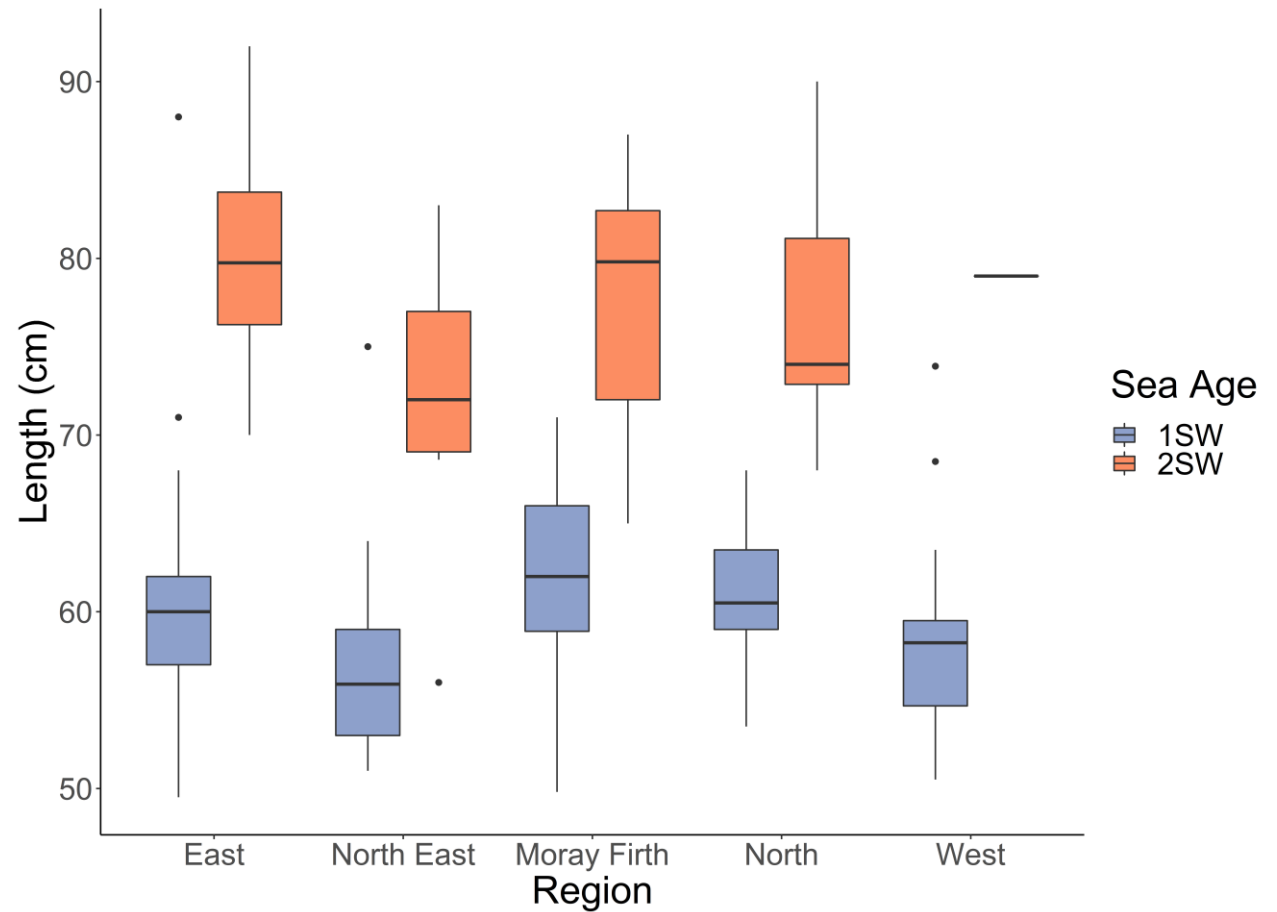
River Oykel
70.5 cm, 3.5 kg
4 yr old smolt
Erosion



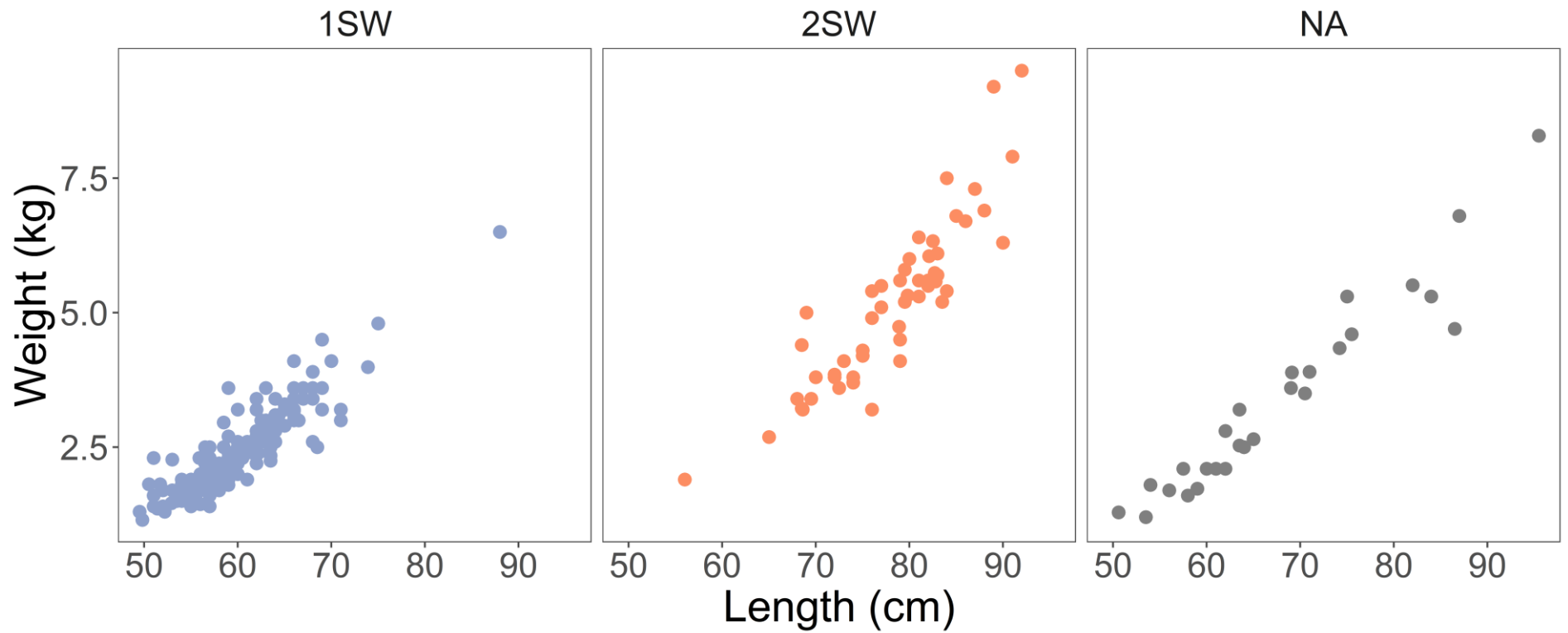
River Tweed
54 cm, 1.8 kg
1 yr old smolt
1 yr at sea

Sizes

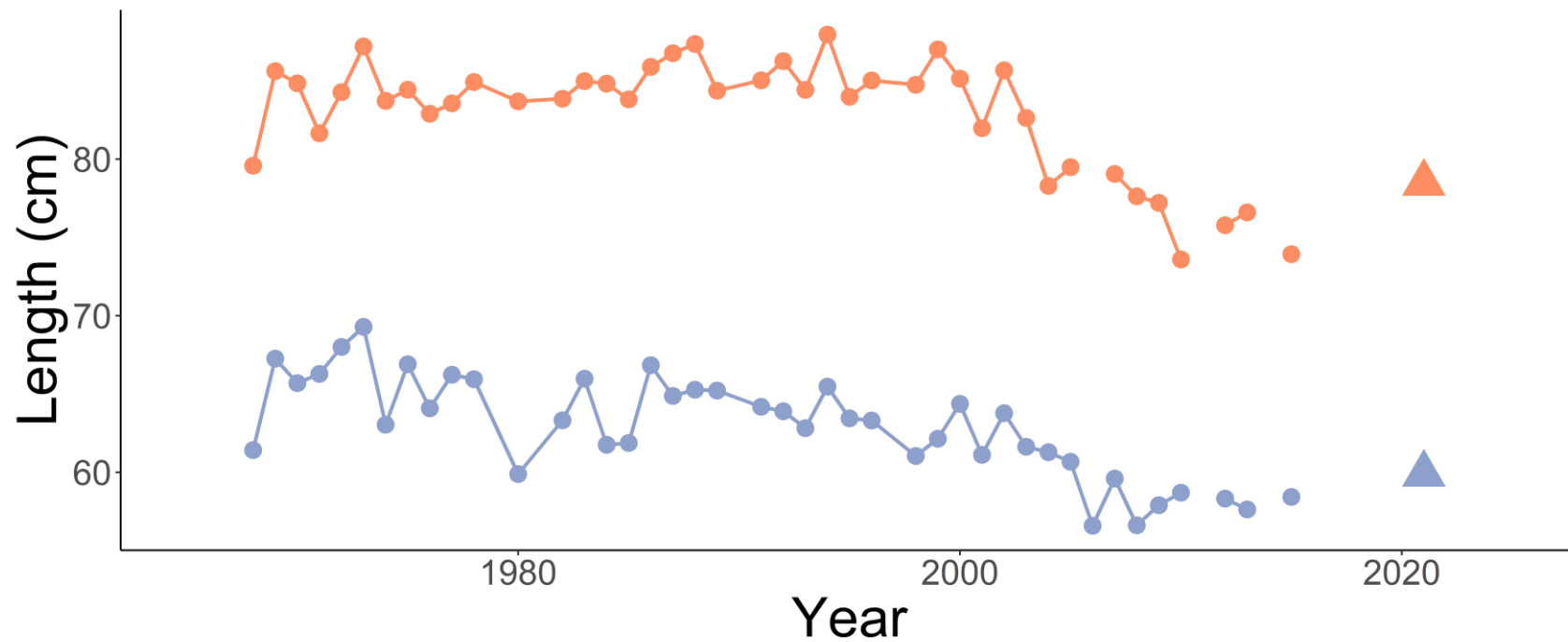
Sampled salmon were bigger in the East and Moray Firth for both 1SW and 2SW



Length Weight



Changes in size (Tweed)

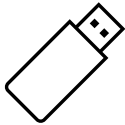


Future plans

2021 season



Publish report



Data and scale images returned to providers

2022 season

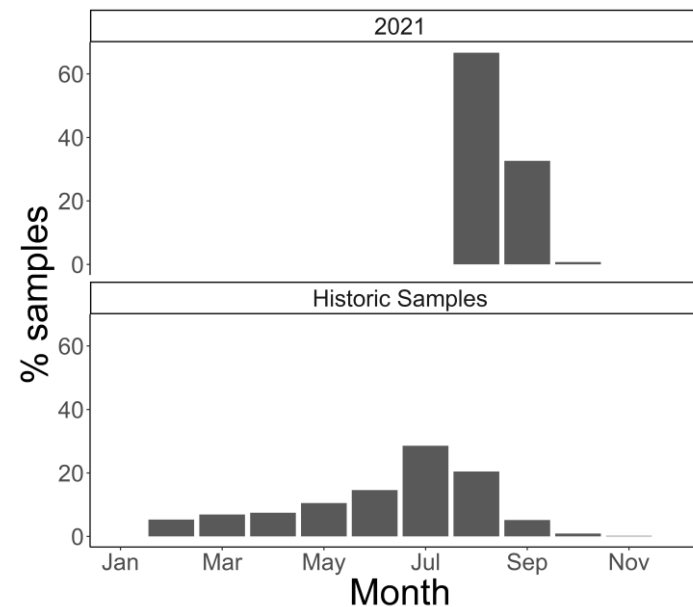


Aim: repeat project

Expansion of season



Refinement of protocols





marinescotland
science

Thank you!