

STOP THE SPREAD

Scotland's wild Atlantic salmon are endangered. Help protect them from diseases, parasites and invasive species

WATCH OUT



Diseases: Skin lesions, abnormal behaviour

Parasites: Gill damage, visible parasites

Invasive Species: Pink salmon, signal crayfish, mink, invasive plants

KEEP IT CLEAN



Check: Remove mud, plants and animals from gear after use

Clean: Wash with hot water or disinfectant if possible

Dry: Dry thoroughly - some threats survive in damp gear for weeks

MAKE A REPORT



Spot a threat?

Scan the QR code to report and learn more

STOP THE SPREAD

Scotland's wild Atlantic salmon are endangered

While you're on the river, you can play a crucial role in safeguarding them from the threats of diseases, parasites, and invasive species. Once these threats take hold, they become very difficult to eliminate.

WHAT SHOULD I WATCH OUT FOR?

DISEASE:

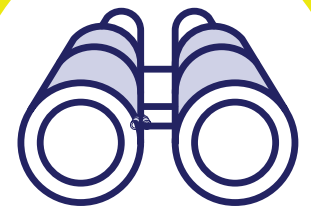
Visible skin growths, lesions, or inflammation and abnormal behaviour in fish

PARASITES:

Small visible parasites on fish, gill damage, or signs of stress and weakness

INVASIVE SPECIES:

Invasive non-native species like pink salmon, signal crayfish, American mink or invasive plants damaging local habitats



HOW CAN I AVOID ACCIDENTAL SPREADING? KEEP IT CLEAN

CHECK



Check your equipment, boat, and clothing after leaving the water for mud, aquatic animals or plant material. Remove anything you find and leave it at the site

CLEAN



Clean everything thoroughly as soon as you can, paying attention to areas that are damp or hard to access. Use hot water if possible

DRY



Dry everything for as long as you can before using elsewhere as some invasive plants and animals can survive for over two weeks in damp conditions

WHAT SHOULD I DO IF I SPOT SOMETHING?



Report any signs of disease, parasites, or invasive species using our app



Scan the QR Code to learn how to identify these threats, make a report, and find out more information about their spread.



Red Skin Disease



American Skunk Cabbage



Giant Hogweed



Pink Salmon



Japanese knotweed



Himalayan balsam



Saprolegnia



Signal Crayfish



American Mink